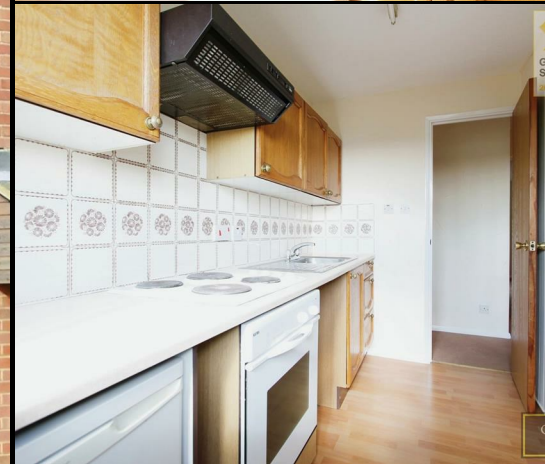


RESIDENTIAL SALES
LETTINGS & PROPERTY
MANAGEMENT

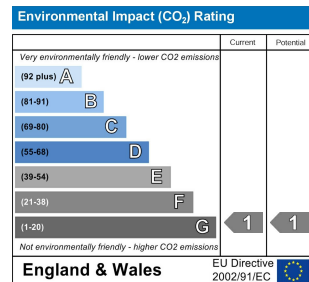
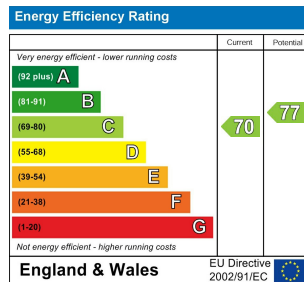
COWLING & PAYNE



Horkesley Way, Wickford
£850 PCM

**** CPO9290 ONLINE ENQUIRIES ONLY ** COWLING & PAYNE ARE PLEASED TO OFFER THIS MODERN FIRST FLOOR ONE BEDROOM APARTMENT, FITTED KITCHEN INC OVEN & HOB, MODERN BATHROOM INC SHOWER, LOUNGE, ALLOCATED PARKING, AVA SOON**

**RESIDENTIAL SALES
LETTINGS & PROPERTY
MANAGEMENT**



COWLING & PAYNE

RESIDENTIAL SALES
LETTINGS & PROPERTY
MANAGEMENT

COWLING & PAYNE

You may download, store and use the material for your own personal use and research. You may not republish, retransmit, redistribute or otherwise make the material available to any party or make the same available on any website, online service or bulletin board of your own or of any other party or make the same available in hard copy or in any other media without the website owner's express prior written consent. The website owner's copyright must remain on all reproductions of material taken from this website.

2-6 Runwell Road, Wickford, Essex, SS11 7AB
Telephone: 01268 730707 | Fax: 01268 730737
info@cowlingandpayne.co.uk
www.cowlingandpayne.co.uk

