

RESIDENTIAL SALES  
LETTINGS & PROPERTY  
MANAGEMENT

# COWLING & PAYNE



Ramsden Court, Wickford  
Asking Price £250,000

Presenting a delightful flat for sale, ideal for couples or first-time buyers. This charming property is in good condition, ready for you to move in and make your own.

The flat features two generously sized double bedrooms, providing ample space for relaxation and storage. The bedrooms are well-maintained and offer a blank canvas for you to inject your personal style.

The property includes a 3 piece bathroom, with shower over bath & a heated towel rail, designed with functionality and comfort in mind.

A well-appointed kitchen serves as the heart of the home, offering a space for you to prepare your meals and enjoy your morning coffee. The kitchen comes with a mixture of wall and base units with a white gloss finish, integrated oven, hob, extractor, integrated fridge/freezer & integrated washing machine.

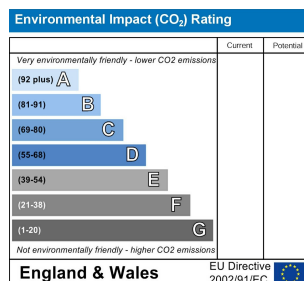
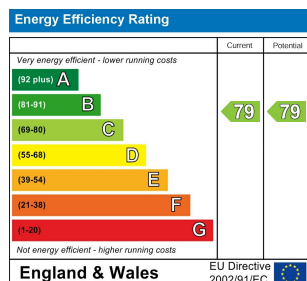
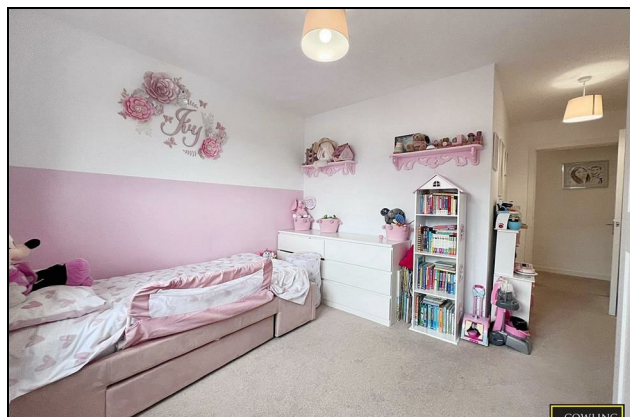
Further complementing the living space is a single reception room. This area provides a comfortable space for you to unwind and entertain guests. The living room is open planned to the kitchen/diner, offering the ideal social place with family or guests.

One of the notable aspects of this property is its sales scheme. The property is offered on a 50% shared ownership. This is an excellent opportunity for first-time buyers or couples to step onto the property ladder without the need for a substantial deposit.

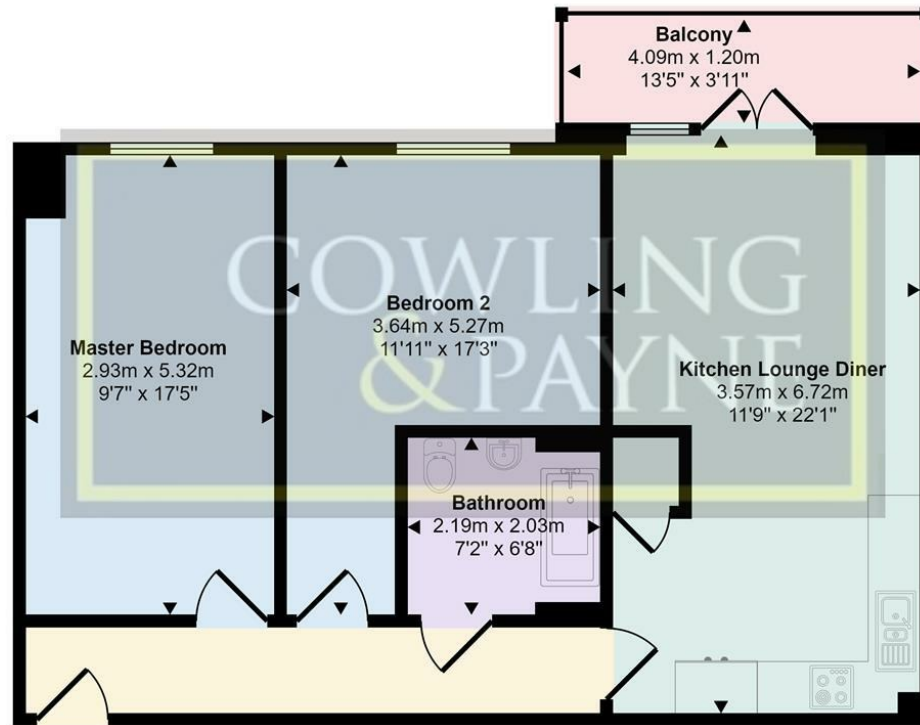
The property also comes with one allocated parking space, with several of visitor bays for guests.

For added convenience the block has a communal lift & staircase leading up to the apartment. The block has a secure buzzer entry system with a camera so you can see who is trying to enter before allowing access. This then links up to the entry system in the flat.

Overall, this flat provides an excellent opportunity to acquire a home that is both affordable and in good condition. Its shared ownership scheme and ideal location make it an attractive proposition for first-time buyers.



Approx Gross Internal Area  
68 sq m / 736 sq ft



Floorplan

This floorplan is only for illustrative purposes and is not to scale. Measurements of rooms, doors, windows, and any items are approximate and no responsibility is taken for any error, omission or mis-statement. Icons of items such as bathroom suites are representations only and may not look like the real items. Made with Made Snappy 360.

You may download, store and use the material for your own personal use and research. You may not republish, retransmit, redistribute or otherwise make the material available to any party or make the same available on any website, online service or bulletin board of your own or of any other party or make the same available in hard copy or in any other media without the website owner's express prior written consent. The website owner's copyright must remain on all reproductions of material taken from this website.



COWLING  
& PAYNE



COWLING  
& PAYNE



COWLING  
& PAYNE



COWLING  
& PAYNE