



Gold Trusted Service Award 2023 feefo



Mount Close , Wickford, SS11 8HF Asking Price £400,000

Gold Trusted Service Award 2023 feefo

** GUIDE PRICE £400,000 - £425,000 ** Welcome to this charming semi-detached house located on Mount Close in the sought-after area of Wickford. This property boasts a spacious reception room, perfect for entertaining guests or relaxing with the family. With three cosy bedrooms, there is ample space for everyone to enjoy.

The house features a newly refurbished interior, including fresh carpets and modern decorations throughout. The brand-new bathroom and kitchen add a touch of luxury to this lovely home, making it move-in ready for its new owners.

Convenience is key with off-street parking available for one vehicle, ensuring you never have to worry about finding a parking spot. Situated in a popular location near schools, this property is ideal for families looking for a peaceful neighbourhood with easy access to amenities. Additionally, the property is in close proximity to local schools and public transport links, further enhancing its appeal.

Enjoy the best of both worlds with a tranquil setting while still being within walking distance to Wickford high street, offering a variety of shops, cafes, and restaurants.

This stunning semi-detached home is the perfect combination of comfort, convenience, and style. It's been lovingly refurbished and is ready to welcome you. Don't miss out on this wonderful opportunity to make this house your home!

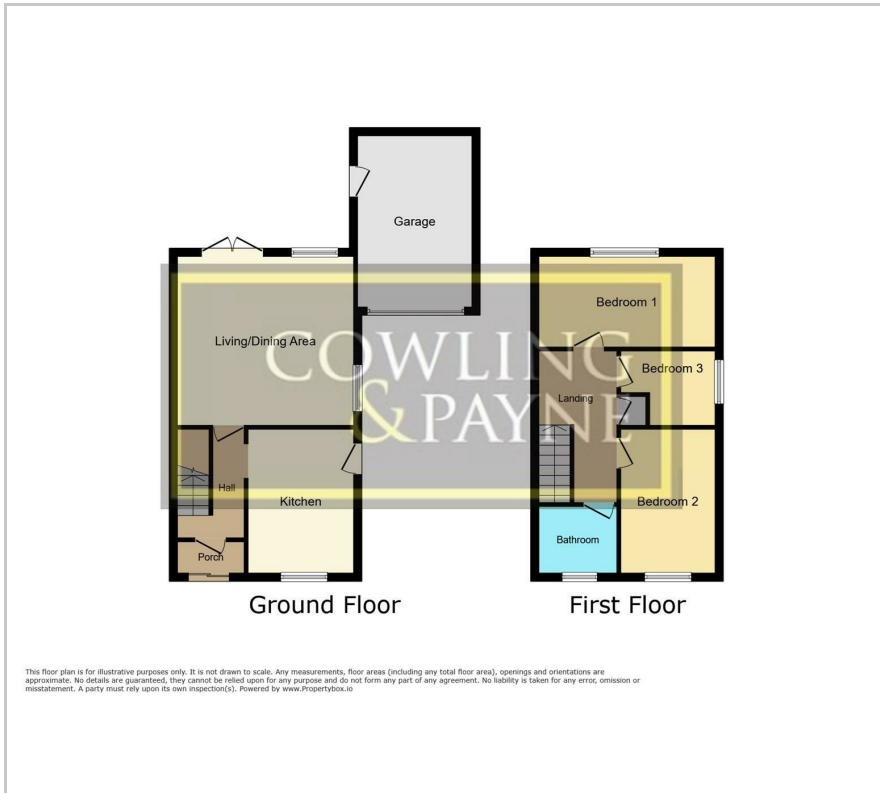
- CHAIN FREE
- NEW KITCHEN
- PARTIAL RE WIRE
- NEW BATHROOM
- OFF STREET PARKING
- GARAGE
- NEW FRONT DOOR TO BE INSTALLED
- REFURBISHED THROUGHOUT
- CALL NOW FOR FURTHER INFORMATION
- POPULAR LOCATION NEARBY LOCAL AMENITIES

Viewing

Please contact our Cowling & Payne Office on 01268 730707 if you wish to arrange a viewing appointment for this property or require further information.



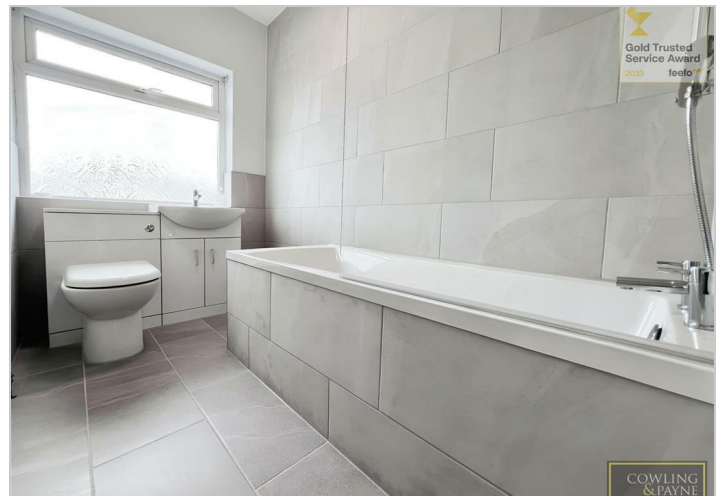
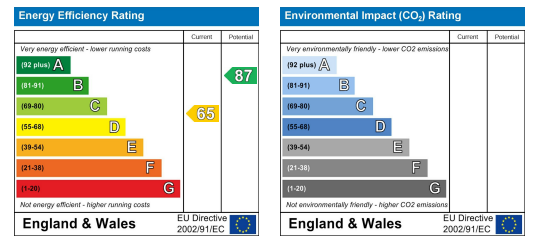
Floor Plan



Area Map



Energy Efficiency Graph



These particulars, whilst believed to be accurate are set out as a general outline only for guidance and do not constitute any part of an offer or contract. Intending purchasers should not rely on them as statements of representation of fact, but must satisfy themselves by inspection or otherwise as to their accuracy. No person in this firm's employment has the authority to make or give any representation or warranty in respect of the property.