

RESIDENTIAL SALES
LETTINGS & PROPERTY
MANAGEMENT

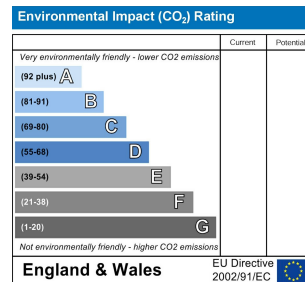
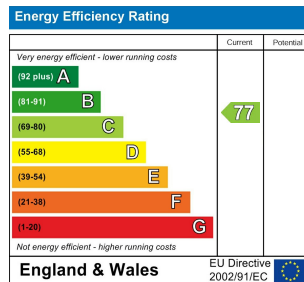
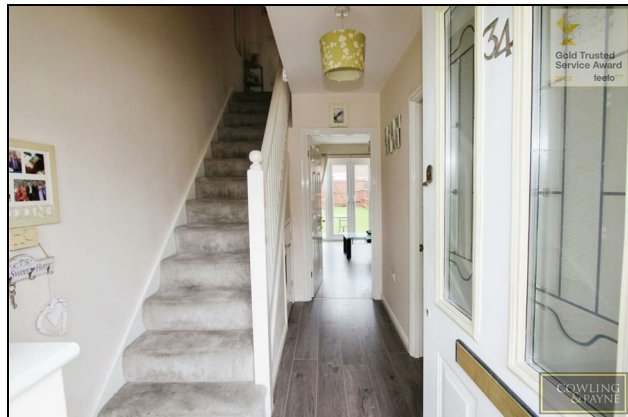
COWLING & PAYNE



Muir Place, Wickford
£1,250

**** CPO9271 ONLINE ENQUIRIES ONLY ** COWLING & PAYNE ARE DELIGHTED TO OFFER THIS TWO-BEDROOM HOUSE SITUATED WITHIN THE POPULAR 'WICK MEADOWS' DEVELOPMENT. THE PROPERTY IS AVAILABLE EARLY LATE JULY/AUGUST 2024. EPC RATING C**

RESIDENTIAL SALES
LETTINGS & PROPERTY
MANAGEMENT



COWLING & PAYNE

RESIDENTIAL SALES
LETTINGS & PROPERTY
MANAGEMENT

COWLING & PAYNE

You may download, store and use the material for your own personal use and research. You may not republish, retransmit, redistribute or otherwise make the material available to any party or make the same available on any website, online service or bulletin board of your own or of any other party or make the same available in hard copy or in any other media without the website owner's express prior written consent. The website owner's copyright must remain on all reproductions of material taken from this website.

2-6 Runwell Road, Wickford, Essex, SS11 7AB
Telephone: 01268 730707 | Fax: 01268 730737
info@cowlingandpayne.co.uk
www.cowlingandpayne.co.uk

