



Gold Trusted Service Award 2023 feefo



Grant Close , Wickford, SS12 9NF Guide Price £190,000

**** GUIDE PRICE £190,000 - £200,000 ****

Presenting for sale this charming maisonette in good condition. This delightful property is an exceptional offering in the current market place and is sure to appeal to a range of potential buyers.

The property has been thoughtfully designed to create a comfortable and relaxing living space. As you step inside, you are greeted by a welcoming reception room. This room is generously proportioned and is perfect for relaxing or entertaining guests. The space is versatile and can easily accommodate a range of different furniture layouts.

Next, we move onto the kitchen. This room has been fitted with a range of units and work surfaces, providing plenty of storage and food preparation space. Whether you are a keen cook or simply enjoy the occasional home-cooked meal, you will find the kitchen to be well equipped to meet your needs.

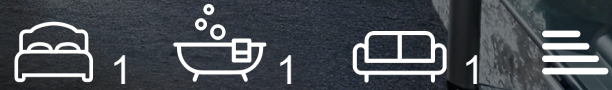
The property also features one bedroom, offering a serene haven for rest and relaxation. The room is of a good size and can comfortably accommodate a double bed and additional furniture, providing ample storage space.

- CHAIN FREE
- GREAT LEASE 970 YEARS
- PARKING
- WET ROOM
- GOOD CONDITION
- CALL TO BOOK YOUR VIEWING

Gold Trusted Service Award 2023 feefo

Viewing

Please contact our Cowling & Payne Office on 01268 730707 if you wish to arrange a viewing appointment for this property or require further information.



Floor Plan



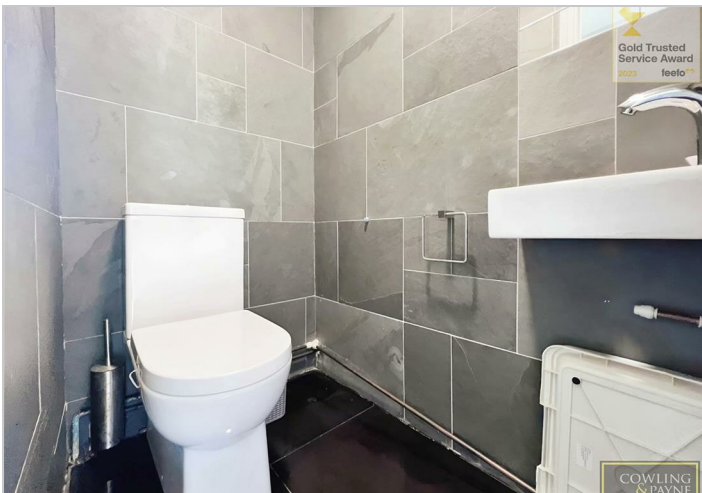
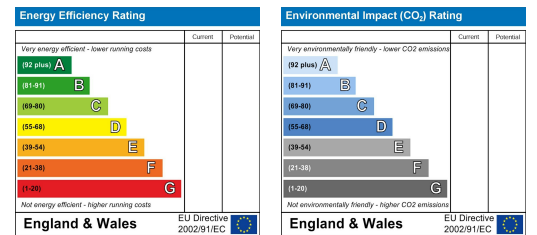
Floor Plan

This floor plan is for illustrative purposes only. It is not drawn to scale. Any measurements, floor areas (including any total floor area), openings and orientations are approximate. No details are guaranteed, they cannot be relied upon for any purpose and do not form any part of any agreement. No liability is taken for any error, omission or misstatement. A party must rely upon its own inspection(s). Powered by www.propertybox.co.uk

Area Map



Energy Efficiency Graph



These particulars, whilst believed to be accurate are set out as a general outline only for guidance and do not constitute any part of an offer or contract. Intending purchasers should not rely on them as statements of representation of fact, but must satisfy themselves by inspection or otherwise as to their accuracy. No person in this firm's employment has the authority to make or give any representation or warranty in respect of the property.

2-6 Runwell Road, Wickford, Essex, SS11 7AB

Tel: 01268 730707 Email: info@cowlingandpayne.co.uk <https://www.cowlingandpayne.co.uk>