



Gold Trusted Service Award 2023 feefo

Stapleford End , Wickford, SS11 8XT Guide Price £300,000

Gold Trusted Service Award 2023 feefo

**** GUIDE PRICE £300,000 - £325,000 ****

Step into this charming terraced house, perfect for couples looking for their new home sweet home. This lovely property is in good condition, freshly painted throughout with new carpets, ready for you to move right in and start making memories.

As you enter, you'll find two cosy reception rooms where you can unwind after a long day or entertain guests in style. The modern kitchen is waiting for your culinary creations to come to life, making it a delightful space for preparing delicious meals.

The property boasts two inviting bedrooms, including a spacious master bedroom where you can relax and recharge. The bathroom provides a tranquil escape, ideal for unwinding with a hot bath after a busy day.

One of the highlights of this property is the garage, perfect for keeping your car secure or providing extra storage space. With off-street parking available, you'll never have to worry about finding a spot when you return home.

Situated in a convenient location, this terraced house offers easy access to local amenities, making

- Freshly painted with new carpets
- Modern kitchen for culinary creations
- Spacious master bedroom for relaxation
- Garage for secure car storage
- Off-street parking available
- Ideal for couples looking for home
- Ready to move in and make memories
- Chain Free

Viewing

Please contact our Cowling & Payne Office on 01268 730707 if you wish to arrange a viewing appointment for this property or require further information.



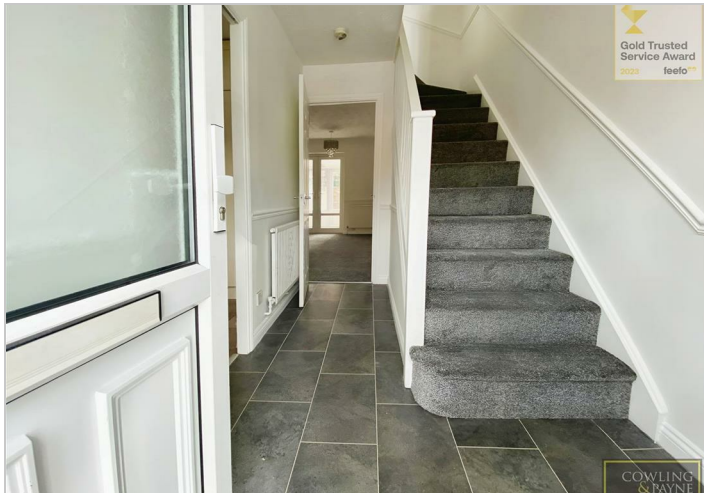
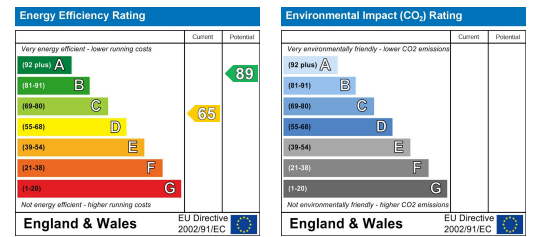
Floor Plan



Area Map



Energy Efficiency Graph



These particulars, whilst believed to be accurate are set out as a general outline only for guidance and do not constitute any part of an offer or contract. Intending purchasers should not rely on them as statements of representation of fact, but must satisfy themselves by inspection or otherwise as to their accuracy. No person in this firm's employment has the authority to make or give any representation or warranty in respect of the property.

2-6 Runwell Road, Wickford, Essex, SS11 7AB

Tel: 01268 730707 Email: info@cowlingandpayne.co.uk <https://www.cowlingandpayne.co.uk>