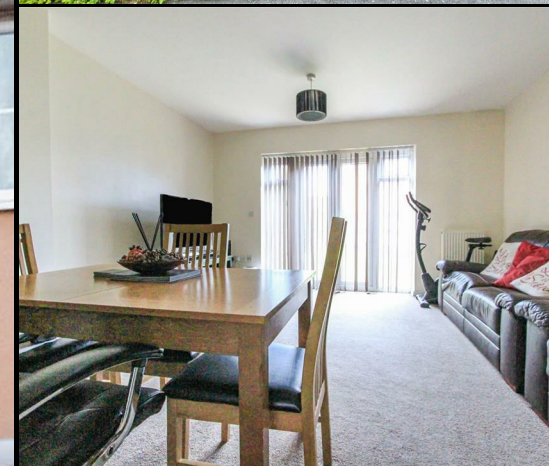


RESIDENTIAL SALES
LETTINGS & PROPERTY
MANAGEMENT

COWLING & PAYNE

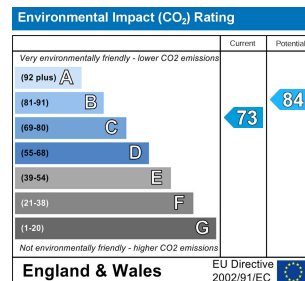
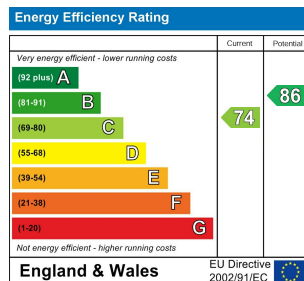


COWLING
& PAYNE



Murray Way, Wickford
£1,400 PCM

****CPO9247 ONLINE ENQUIRIES ONLY**** COWLING AND PAYNE ARE PLEASED TO OFFER THIS THREE BEDROOM TOWNHOUSE ARRANGED OVER THREE FLOORS. THE PROPERTY IS SITUATED ON THE 'POPULAR WICK MEADOWS' DEVELOPMENT. FEATURES INCLUDE FITTED KITCHEN, GROUND FLOOR CLOAKROOM AND RECEPTION HALLWAY, THREE GOOD SIZED BEDROOMS WITH EN SUITE TO MASTER BEDROOM, WHITE FAMILY BATHROOM, PRIVATE REAR GARDEN, GARAGE TO REAR AVAILABLE MAY 2024 - INTERNAL LIBRARY PHOTOS USED, NEW PHOTOS COMING SOON



RESIDENTIAL SALES
LETTINGS & PROPERTY
MANAGEMENT

COWLING & PAYNE

You may download, store and use the material for your own personal use and research. You may not republish, retransmit, redistribute or otherwise make the material available to any party or make the same available on any website, online service or bulletin board of your own or of any other party or make the same available in hard copy or in any other media without the website owner's express prior written consent. The website owner's copyright must remain on all reproductions of material taken from this website.

2-6 Runwell Road, Wickford, Essex, SS11 7AB
Telephone: 01268 730707 | Fax: 01268 730737
info@cowlingandpayne.co.uk
www.cowlingandpayne.co.uk

