

RESIDENTIAL SALES
LETTINGS & PROPERTY
MANAGEMENT

COWLING & PAYNE



Sycamore Court, Wickford
Asking Price £215,000

Cowling & Payne are pleased to bring to the market, this 1-bedroom apartment for sale in a sought-after retirement complex, offering a tranquil and secure environment for residents. Situated within walking distance of Wickford High Street, this property provides the perfect balance of convenience and peaceful living.

Upon entering the flat, you are greeted by a welcoming entrance hall, leading through to a spacious reception room, ideal for relaxing or entertaining guests. The bedroom boasts a comfortable double size, ensuring a restful night's sleep. The bathroom is convenient with a shower over bath.

The property features a well-equipped kitchen for preparing delicious meals, while the communal laundry room adds to the convenience of everyday living. Residents can enjoy the communal gardens, providing a serene outdoor space to unwind.

With a secure buzzer entry system and a phone in the apartment, residents can feel safe and connected at all times. Parking and visitor parking are available, ensuring hassle-free transportation for both residents and guests.

Benefiting from on-site manager support 9-5pm and being offered with no chain, this flat presents a fantastic opportunity for those seeking a comfortable and secure retirement living experience. Don't miss the chance to make this wonderful property your new home.



Hallway

Lounge 13'10 x 11'10

Kitchen 8'2 x 5'8

Bedroom 13'8 x 10'5

Bathroom

Energy Efficiency Rating		Current	Potential
Very energy efficient - lower running costs			
(92 plus) A			
(81-91) B			
(69-80) C			
(55-68) D			
(39-54) E			
(21-38) F			
(1-20) G			
Not energy efficient - higher running costs			
England & Wales		EU Directive 2002/91/EC	

Environmental Impact (CO ₂) Rating		Current	Potential
Very environmentally friendly - lower CO ₂ emissions			
(92 plus) A			
(81-91) B			
(69-80) C			
(55-68) D			
(39-54) E			
(21-38) F			
(1-20) G			
Not environmentally friendly - higher CO ₂ emissions			
England & Wales		EU Directive 2002/91/EC	



Floor Plan

This plan is for illustration purposes only and may not be representative of the property. Plan not to scale. Powered by PropertyBox

You may download, store and use the material for your own personal use and research. You may not republish, retransmit, redistribute or otherwise make the material available to any party or make the same available on any website, online service or bulletin board of your own or of any other party or make the same available in hard copy or in any other media without the website owner's express prior written consent. The website owner's copyright must remain on all reproductions of material taken from this website.



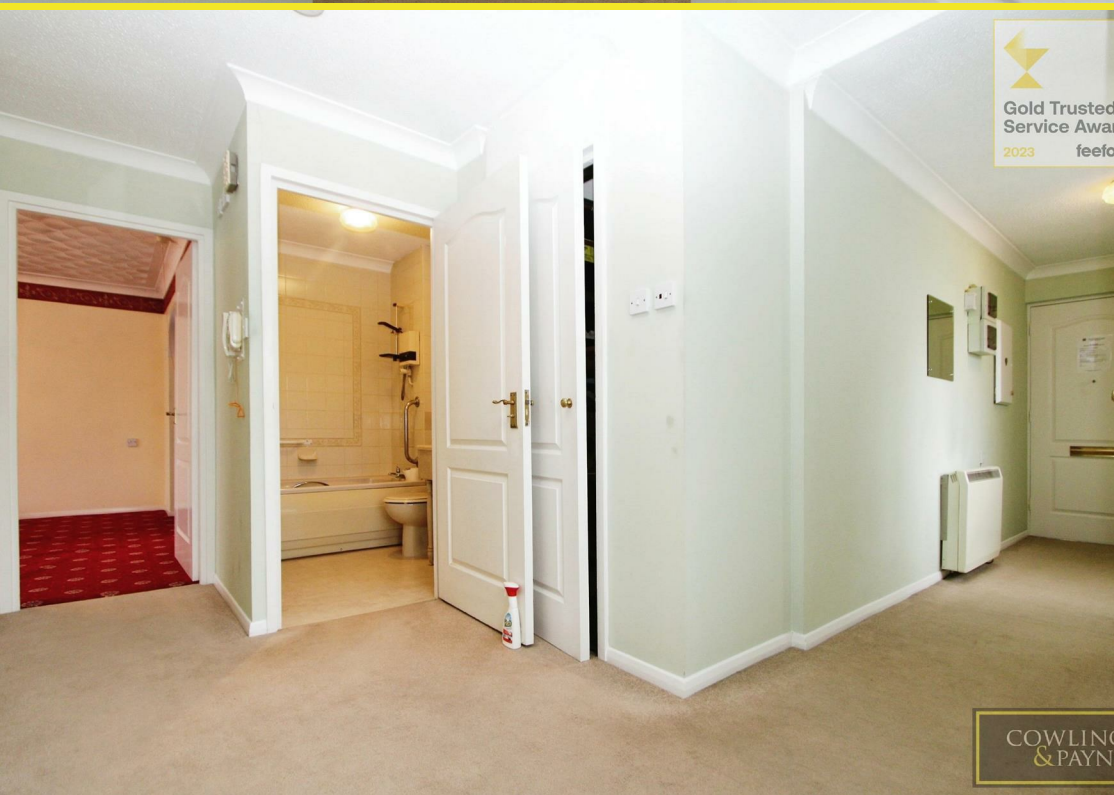
Gold Trusted Service Award
2023 feefo

COWLING & PAYNE



Gold Trusted Service Award
2023 feefo

COWLING & PAYNE



Gold Trusted Service Award
2023 feefo

COWLING & PAYNE



Gold Trusted Service Award
2023 feefo

COWLING & PAYNE