



APEX HOUSE
ST. ALBANS



APEX HOUSE

ST. ALBANS

36 one bedroom apartments, 3 one bedroom duplexes and 9 two bedroom duplexes all with high specification, contemporary interiors and underground parking.

Apex House is located in a superb location, just 10 minutes walk from St Albans City Station providing excellent transport links to London.





ST. ALBANS

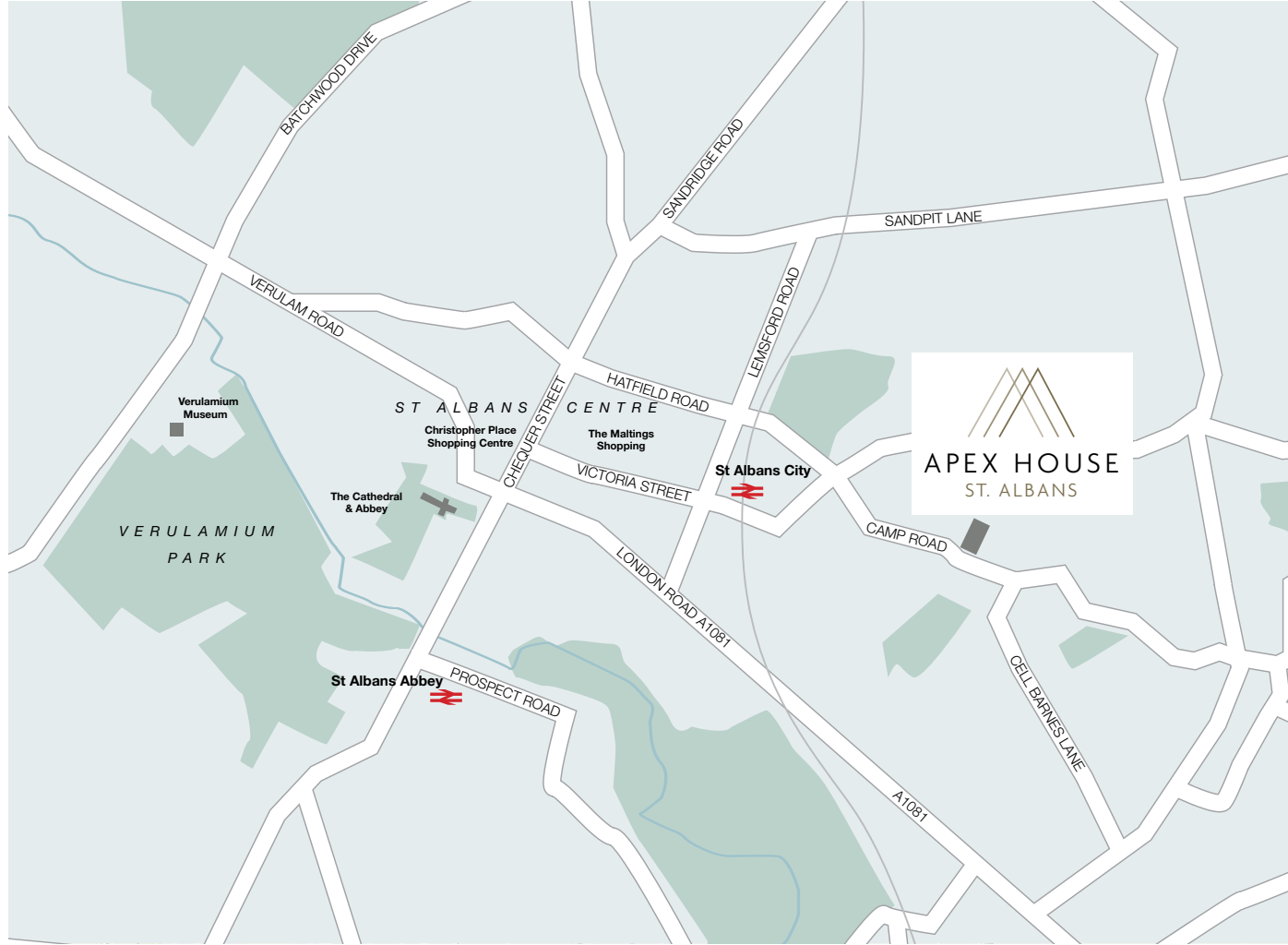


St Albans colourful history is reflected in the Roman remains and the beautiful Medieval architecture of the Cathedral, dominating the skyline from any direction.

The award-winning Verulamium Museum displays beautiful objects from the Roman period and a short walk away is the Roman Theatre, built in about 140 AD, the only visible example anywhere in Britain. The twice weekly street market running along the length of St Peter's Street was granted a Royal Charter in 1553 and is still just as vibrant today.

The historic city centre with its attractive streets provide an excellent shopping experience along with fantastic range of restaurants and entertainment venues.

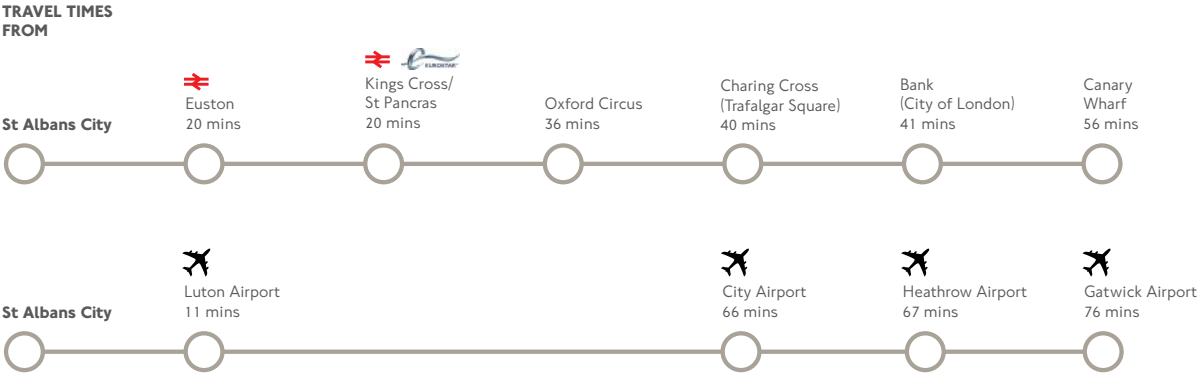
The Maltings and Christopher Place Shopping Centres offer a mixture of local independent shops and national high street name stores.



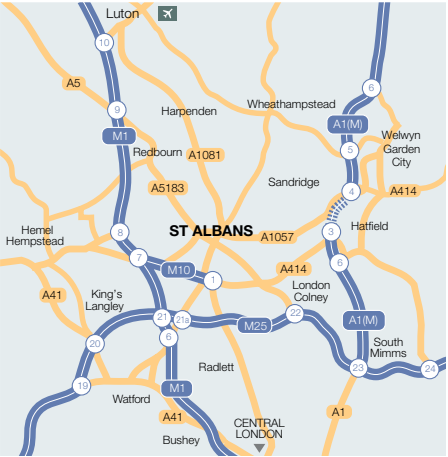
CITY MAP

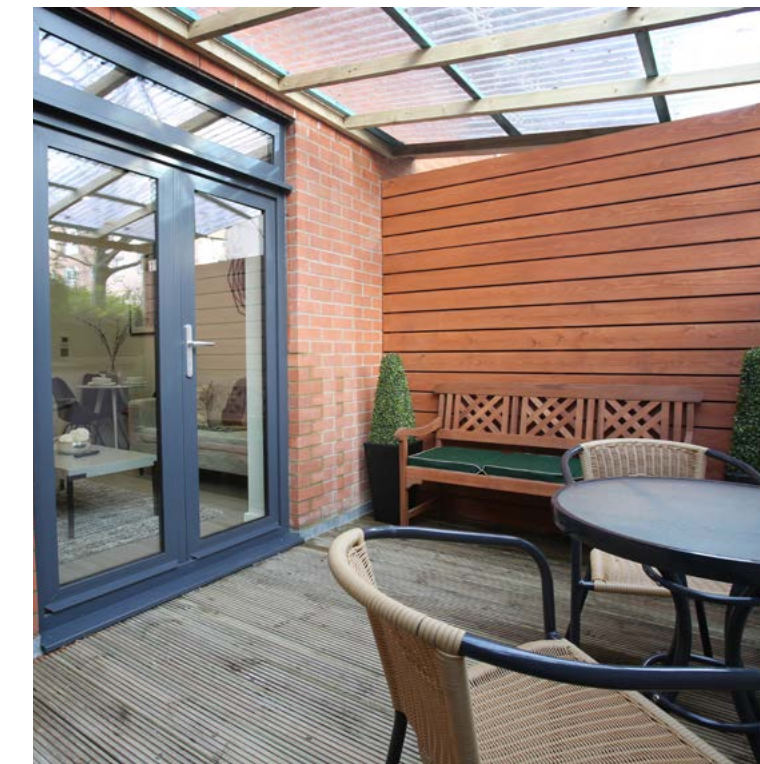
The quality of life in St Albans attracts people moving out of London, it was rated in the top ten places to live in England and Wales in a recent survey*, considered as an ideal place to live within commuter range of Central London and having excellent local transport links. The index used official data on average weekly incomes, crime rates, health, home ownership and economic activity to rank different towns.

There are lush green parks, including the 100 acre Verulamium Park, and open countryside to enjoy leisure time and the area also benefits from excellent private and state schools.



Source: tfl.gov.uk / google maps





Exquisite craftsmanship, combined with high quality design, detailing and finish, help create the finest contemporary homes at Apex House, St Albans.

This is an extremely rare opportunity to enjoy the benefits of newly built homes in an ideally located historic town.



Perfect for informal entertaining and relaxing,
the contemporary flexible design skillfully
maximises generous space.

The kitchens showcase contemporary design
at its best, with contrasting finishes, silestone
work surfaces and state-of-the-art chrome and
stainless steel appliances.

Elegantly styled with high quality finish
and meticulous attention to detail.





SPECIFICATION

Security

- Video entry
- High performance sound insulating window and external glazed doors

Green

- Water saving fittings
- Low energy lighting
- High levels of insulation

General

- Wood flooring in living space and corridors
- 100% wool 3ply yarn Fleece carpet in bedrooms
- Secured internal bike store
- Private car parking space
- Secure post boxes
- Solid wood doors with satin spray painted finish
- Terraces on ground floor units and penthouse maisonettes
- Washing machine/dryer
- Dishwasher
- Communal boilers, with individual hot water meters

Heating and cooling

- Underfloor heating in all rooms and WCs with individual digital controls
- Dual fuel chrome towel rails in bathrooms

Electrical and lighting

- Led down lighters
- Reinforced walls for wall hung TV
- Chrome plug plates

Kitchen

- Bespoke full height Italian Kitchens
- Silestone worktop
- Led lighting under wall cabinets
- Modern chrome mixer tap
- Smeg appliances
- 4 ring induction hob
- Stainless steel single oven
- Stainless steel single microwave
- Integrated extractor fan
- Integrated fridge/freezer
- Integrated dishwasher

Bedrooms

- Bespoke wardrobes
- Reinforced walls for wall hung TV

Bathrooms

- Fully tiled bathrooms in Italian porcelain, with feature mosaics
- Wall hung WC with soft close seat
- Dual flush mechanism
- Wall hung vanity units with motion light switch and integrated shaver sockets
- Frameless clear glass shower screen
- Wall mounted chrome heated towel rail
- Underfloor heating with digital thermostat



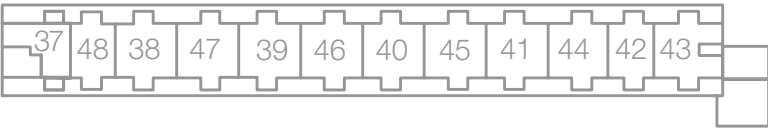
SCHEDULE OF AREAS

Apartment	Floor	GIA Sq M	GIA Sq Ft	Type
1	Ground	40	431	A
2	Ground	41	441	B
3	Ground	36	388	C
4	Ground	35	377	E
5	Ground	43	463	F
6	Ground	35	377	E
7	Ground	36	388	C
8	Ground	41	441	B
9	Ground	43	463	G
10	Ground	43	463	G
11	Ground	41	441	B
12	Ground	36	388	C
13	Ground	35	377	E
14	Ground	43	463	F
15	Ground	35	377	E
16	Ground	36	388	C
17	Ground	41	441	B
18	Ground	41	441	D
19	First	40	431	A*
20	First	41	441	B*
21	First	36	388	C*
22	First	35	377	E*
23	First	43	463	F*
24	First	35	377	E*

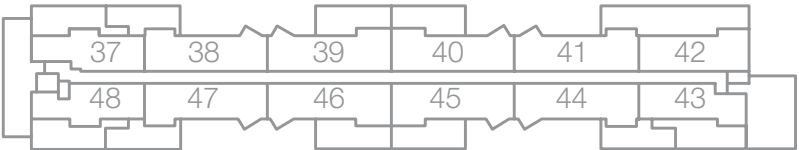
Apartment	Floor	GIA Sq M	GIA Sq Ft	Type
25	First	36	388	C*
26	First	41	441	B*
27	First	43	463	G*
28	First	43	463	G*
29	First	41	441	B*
30	First	36	388	C*
31	First	35	377	E*
32	First	43	463	F*
33	First	35	377	E*
34	First	36	388	C*
35	First	41	441	B*
36	First	41	441	D*
37	Second/Third	58	624	H
38	Second/Third	70	753	J
39	Second/Third	70	753	J
40	Second/Third	70	753	J
41	Second/Third	70	753	J
42	Second/Third	70	753	K
43	Second/Third	58	624	L
44	Second/Third	70	753	J
45	Second/Third	70	753	J
46	Second/Third	70	753	J
47	Second/Third	70	753	J
48	Second/Third	58	624	I

KEY PLANS

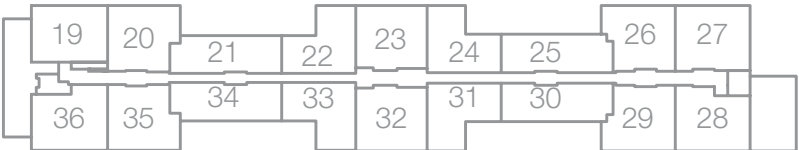
Level 3



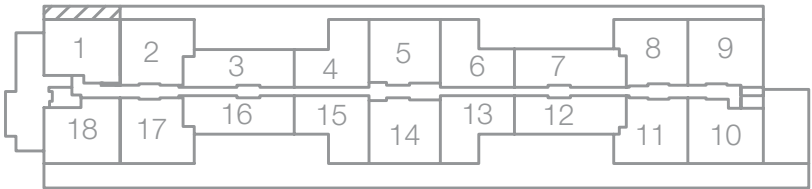
Level 2



Level 1

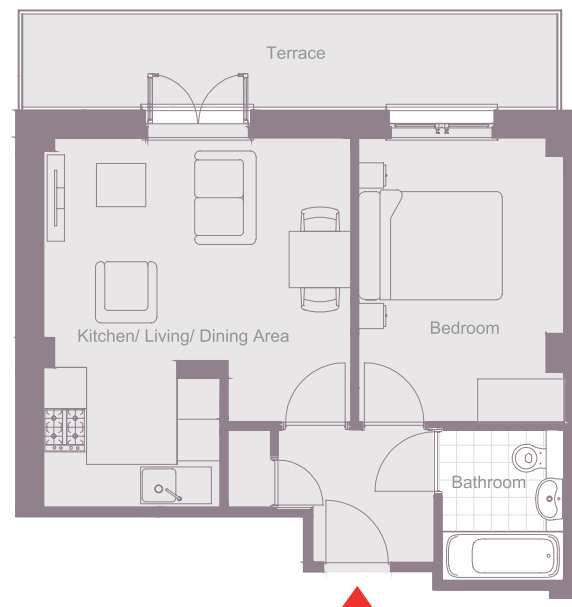


Level G



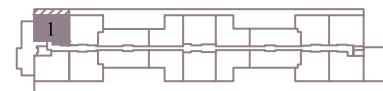
TYPE- A
FLAT 1, Ground floor
TYPE- A*
FLAT 19, First Floor

40 sqm / 431 sqft
One bedroom apartment

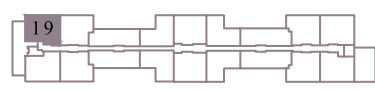


Kitchen/ Living/ Dining Area
5.13m x 4.27m / 16' 10" x 14' 0"
Bedroom
3.96m x 2.87m / 13' 0" x 9' 5"
Bathroom
2.11m x 1.70m / 6' 11" x 5' 7"
Terrace
7.44m x 1.30m / 24' 5" x 4' 3"

Terrace on ground floor only



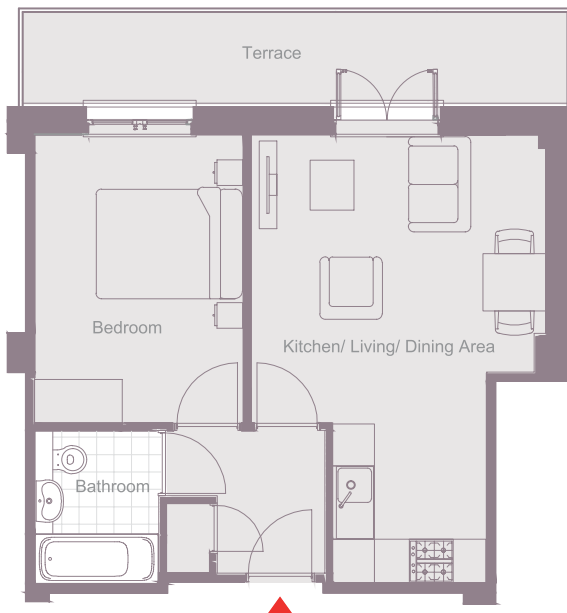
G



1

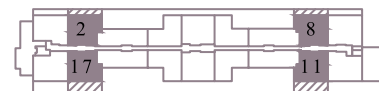
TYPE- B
FLAT 2, 8, 11 & 17 Ground floor
TYPE- B*
FLAT 20, 26, 29 & 35 First Floor

41 sqm / 441 sqft
One bedroom apartment

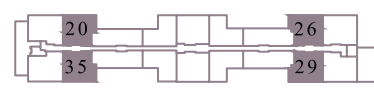


Kitchen/ Living/ Dining Area
6.22m x 4.09m / 20' 5" x 13' 5"
Bedroom
4.01m x 2.90m / 13' 2" x 9' 6"
Bathroom
2.13m x 1.73m / 7' 0" x 5' 8"
Terrace
7.56m x 1.27m / 24' 10" x 4' 2"

Terrace on ground floor only



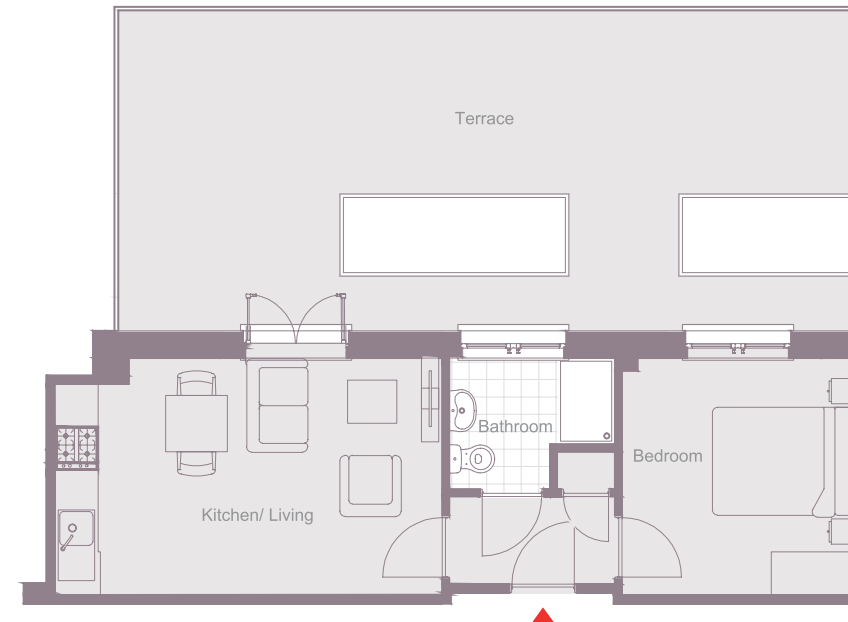
G



1

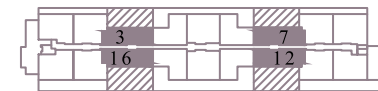
TYPE- C
FLAT 3, 7, 12 & 16 Ground floor
TYPE- C*
FLAT 21, 25, 30 & 34 First Floor

36 sqm / 388 sqft
One bedroom apartment

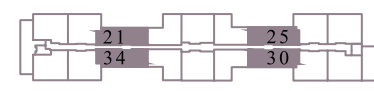


Kitchen/ Living
5.38m x 3.30m / 17' 8" x 10' 10"
Bedroom
3.30m x 3.28m / 10' 10" x 10' 9"
Bathroom
2.31m x 1.83m / 7' 7" x 6' 0"
Terrace
10.26m x 4.45m / 33' 8" x 14' 7"

Terrace on ground floor only



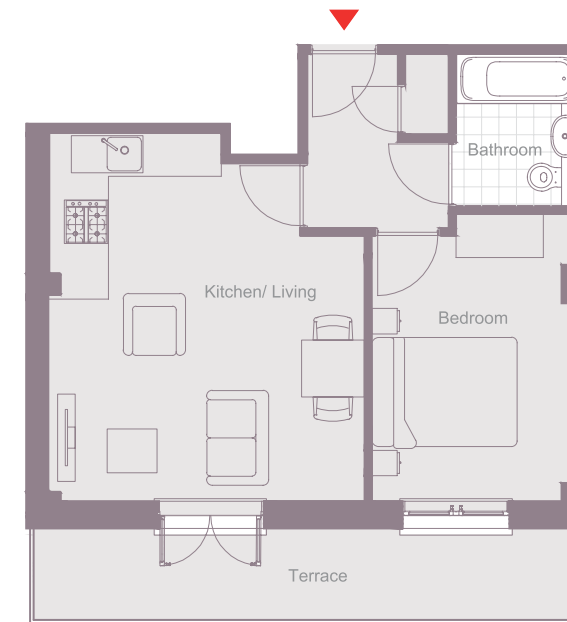
G



1

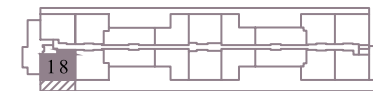
TYPE- D
FLAT 18, Ground floor
TYPE- D*
FLAT 36, First Floor

41 sqm / 441 sqft
One bedroom apartment

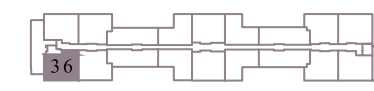


Kitchen/ Living
5.13m x 4.39m / 16' 10" x 14' 5"
Bedroom
3.99m x 2.90m / 13' 1" x 9' 6"
Bathroom
2.13m x 1.73m / 7' 0" x 5' 8"
Terrace
7.56m x 1.27m / 24' 10" x 4' 2"

Terrace on ground floor only



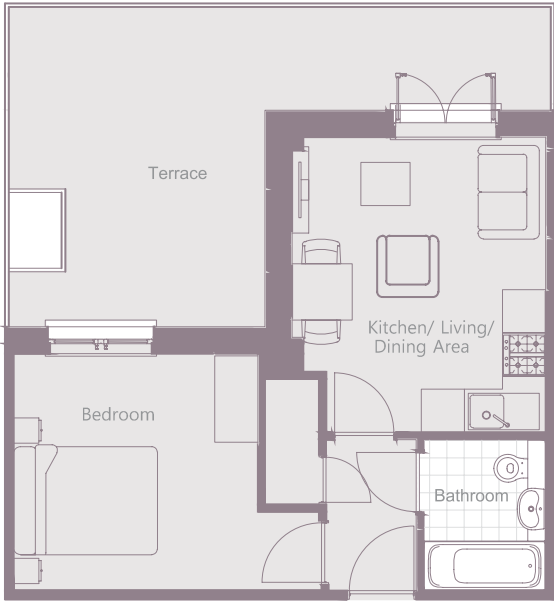
G



1

TYPE- E
FLAT 4, 6, 13 & 15 Ground floor
TYPE- E*
FLAT 22, 24, 31 & 33 First Floor

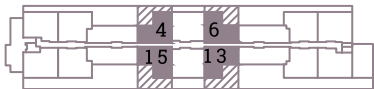
35 sqm / 377 sqft
One bedroom apartment



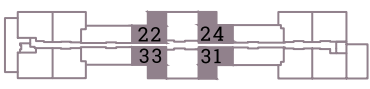
Kitchen/ Living/ Dining Area
Bedroom
Bathroom
Terrace

4.11m x 3.53m / 13' 6" x 11' 7"
4.29m x 3.30m / 14' 1" x 10' 10"
2.11m x 1.70m / 6' 11" x 5' 7"
7.54m x 5.35m / 24' 9" x 14' 7"

Terrace on ground floor only



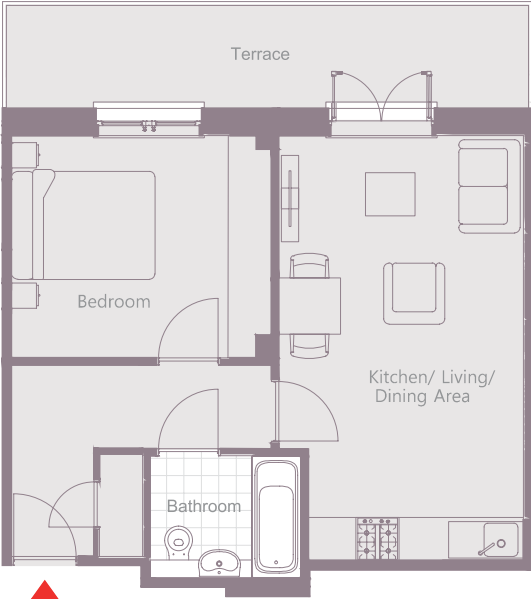
G



1

TYPE- F
FLAT 5 & 14 Ground floor
TYPE- F*
FLAT 23 & 32 First Floor

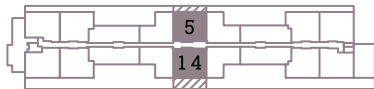
43 sqm / 463 sqft
One bedroom apartment



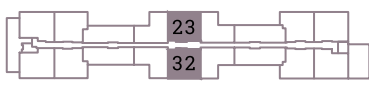
Kitchen/ Living/ Dining Area
Bedroom
Bathroom
Terrace

5.92m x 3.40m / 19' 5" x 11' 2"
3.63m x 3.10m / 11' 11" x 10' 2"
2.11m x 1.70m / 6' 11" x 5' 7"
7.26m x 1.42m / 23' 10" x 4' 8"

Terrace on ground floor only



G

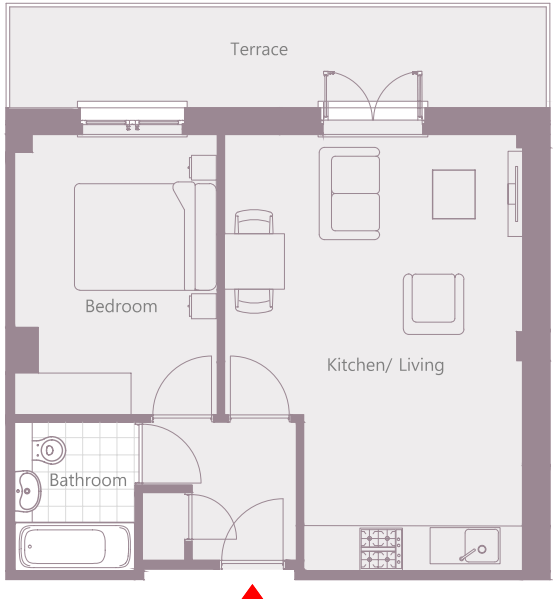


1



TYPE- G
FLAT 9 & 10 Ground floor
TYPE- G*
FLAT 27 & 28 First Floor

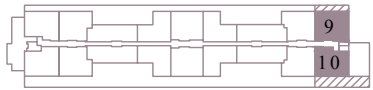
43 sqm / 463 sqft
One bedroom apartment



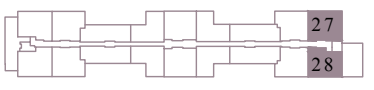
Kitchen/ Living
Bedroom
Bathroom
Terrace

6.15m x 4.22m / 20' 2" x 13' 10"
3.96m x 2.87m / 13' 0" x 9' 5"
2.11m x 1.70m / 6' 11" x 5' 7"
7.56m x 1.42m / 24' 10" x 4' 8"

Terrace on ground floor only
Flat 10 Has an extended balcony



G

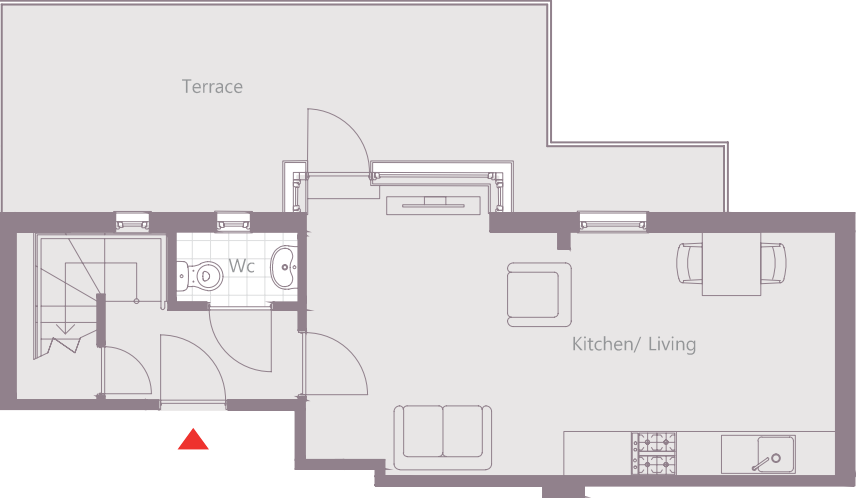


1



TYPE- H
FLAT 37, Second Floor

58 sqm / 624 sqft
One bedroom apartment

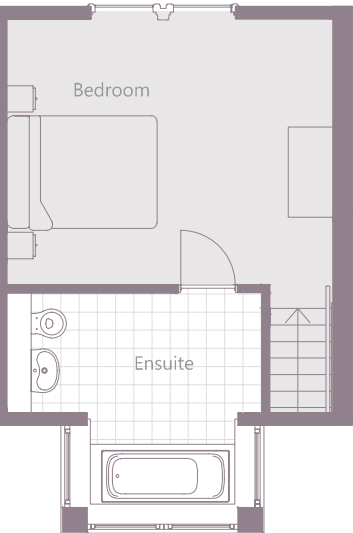


Kitchen/ Living 7.06m x 3.25m / 23' 2" x 10' 8"
Wc 1.63m x 0.94m / 5' 4" x 3' 1"
Terrace 9.60m x 2.79m / 31' 6" x 9' 2"

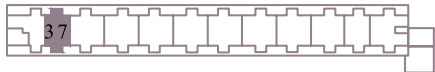


2

FLAT 37, Third Floor



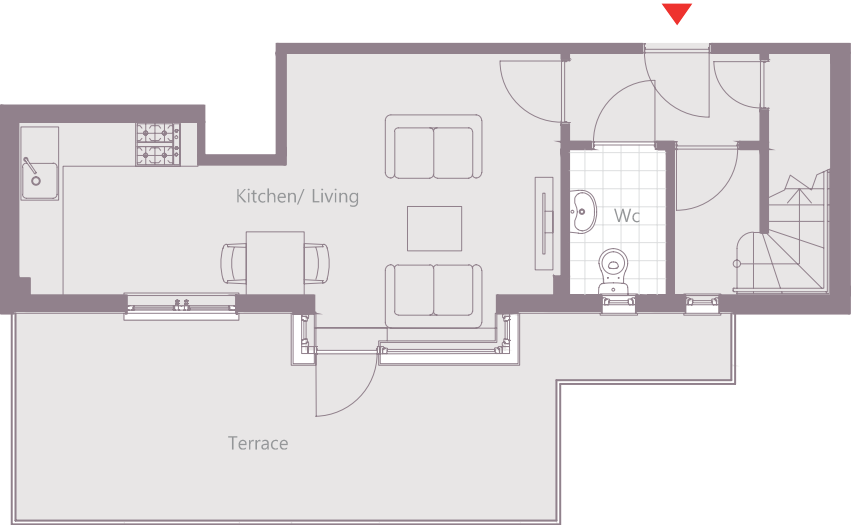
Bedroom 4.34m x 3.56m / 14' 3" x 11' 8"
Ensuite 3.40m x 2.87m / 11' 2" x 9' 5"



3

TYPE- I
FLAT 48, Second Floor

58 sqm / 624 sqft
One bedroom apartment

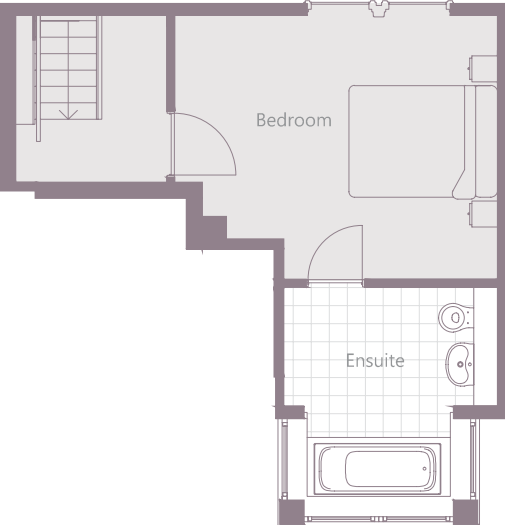


Kitchen/ Living 7.28m x 3.86m / 23' 11" x 12' 8"
Wc 1.96m x 1.32m / 6' 5" x 4' 4"
Terrace 9.60m x 2.77m / 31' 6" x 9' 1"



2

PE- I
FLAT 48, Third Floor



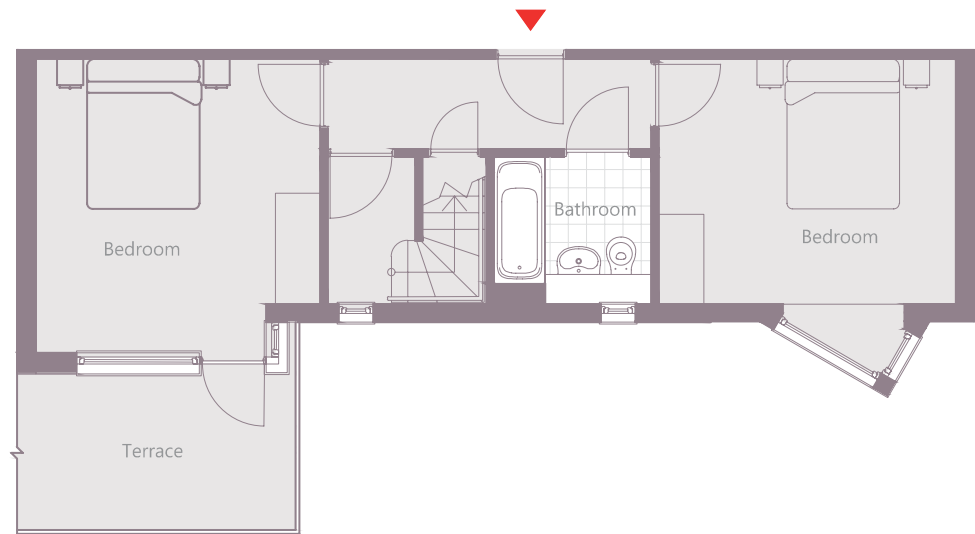
Bedroom 4.34m x 3.56m / 14' 3" x 11' 8"
Ensuite 2.87m x 2.82m / 9' 5" x 9' 3"



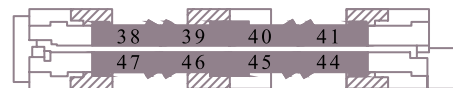
3

TYPE- J
FLAT 38, 39, 40, 41, 44, 45, 46 & 47 Second Floor

70 sqm / 753 sqft
Two bedroom apartment

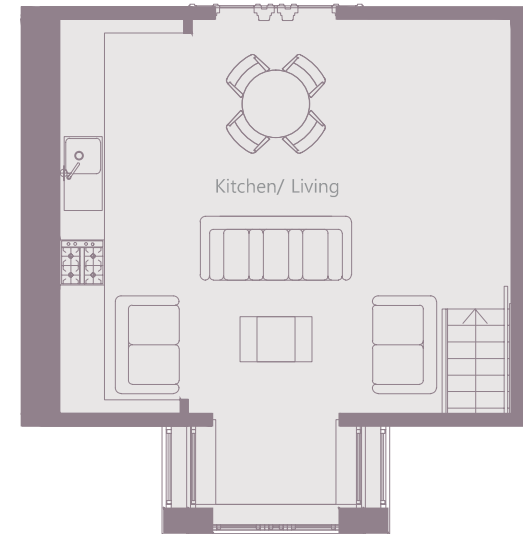


Bedroom 4.19m x 3.96m / 13' 9" x 13' 0"
Bedroom 3.86m x 3.78m / 12' 8" x 12' 5"
Bathroom 2.08m x 1.96m / 6' 10" x 6' 5"
Terrace 3.66m x 2.77m / 12' x 9' 1"



2

FLAT 38, 39, 40, 41, 44, 45, 46, & 47, Third Floor



Kitchen/ Living 6.45m x 6.02m / 21' 2" x 19' 9"

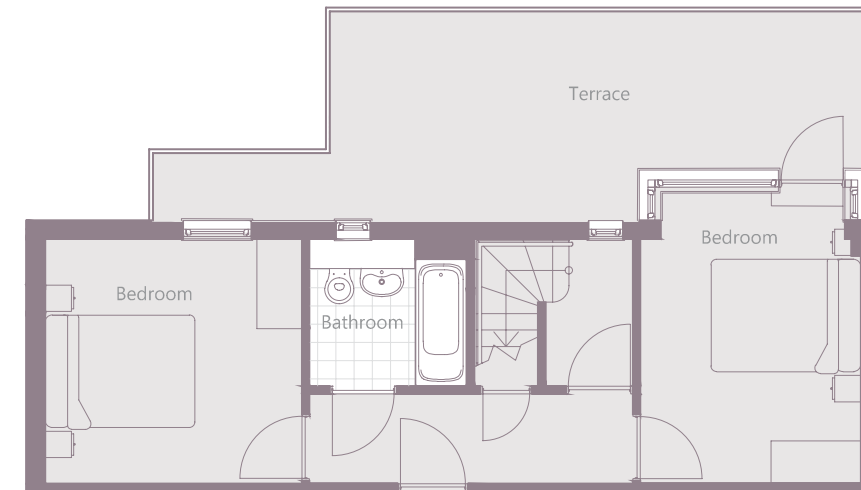


3



TYPE- K
FLAT 42, Second Floor

70 sqm / 753 sqft
Two bedroom apartment

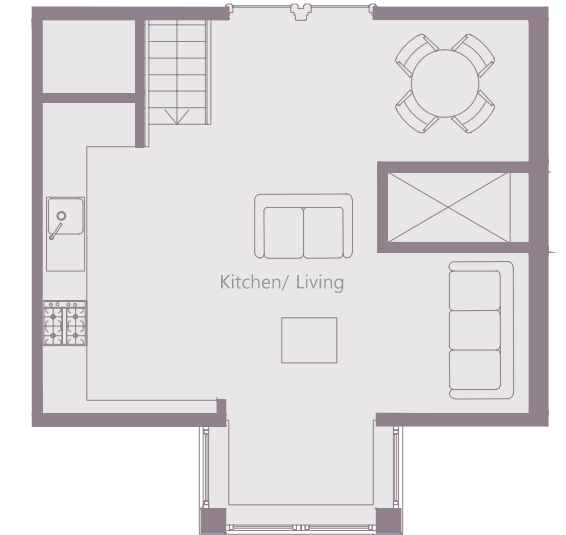


Bedroom 3.40m x 3.25m / 11' 2" x 10' 8"
Bedroom 3.86m x 2.95m / 12' 8" x 9' 8"
Bathroom 2.08m x 1.96m / 6' 10" x 6' 5"
Terrace 9.60m x 2.79m / 31' 6" x 9' 2"

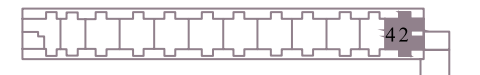


2

FLAT 42, Third Floor



Kitchen/ Living 6.49m x 6.46m / 21' 3" x 21' 2"

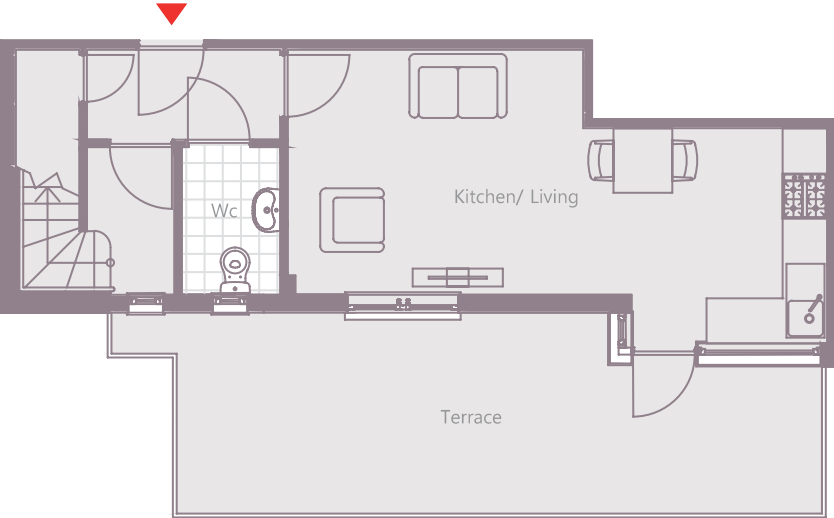


3



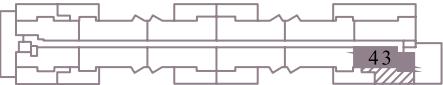
TYPE- L
FLAT 43, Second Floor

58 sqm / 624 sqft
One bedroom apartment



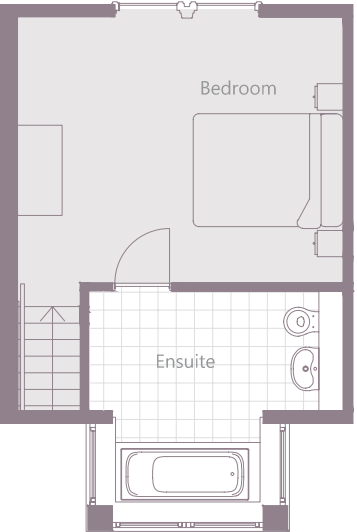
Kitchen/ Living
Wc
Terrace

6.17m x 2.03m / 23' 3" x 10' 8"
1.96m x 1.32m / 6' 5" x 4' 4"
9.17m x 2.92m / 30' 10" x 9' 7"



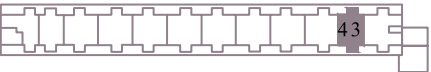
2

FLAT 43, Third Floor



Bedroom
Ensuite

4.34m x 3.56m / 14' 3" x 11' 8"
3.40m x 2.87m / 11' 2" x 9' 5"



3

Disclaimer: Floor plan measurements are approximate and are for illustrative purposes only.



APEX HOUSE
ST. ALBANS

Apex House, 81 Camp Rd, St Albans AL1 5FU



Backed by
HM Government

Important Notice: The agents, their clients and any joint agents give notice that: 1. They have no authority to make or give any representations or warranties in relation to the property either here or elsewhere, either on their own behalf or on behalf of the client or otherwise. These particulars do not form part of any offer or contract and must not be relied upon as statements or representations of fact. 2. Any areas, measurements or distances are approximate. The text, photographs and plans are for guidance only and are not necessarily comprehensive. It should not be assumed that the property has all necessary planning, building regulation or other consents and the agents have not tested any services, equipment or facilities. Purchasers must satisfy themselves by inspection or otherwise.

