

Symonds  
& Sampson

# 4 Woodville Court

Poundbury, Dorchester, Dorset



# 4 Woodville Court

Poundbury Dorchester  
Dorset DT1 3TJ

Architecturally striking penthouse apartment with accommodation arranged over 3 floors, situated close to local amenities.



- Sun room enjoying panoramic views across Poundbury and nearby countryside
  - One of four apartments in the block
    - Lift to second floor
    - Two allocated parking spaces
      - No forward chain
    - Close to Queen Mother Square
  - Lease of 250 years from April 2008 with a remaining 223 years
    - Annual Service Charge £4,688

Guide Price **£365,000**

Leasehold

Poundbury Sales  
01305 251154  
[poundbury@symondsandsampson.co.uk](mailto:poundbury@symondsandsampson.co.uk)



## INTRODUCTION

A unique and versatile penthouse with accommodation over the second, third and fourth floors, set within an attractive building, close to a range of local amenities. The well-proportioned property enjoys views over Poundbury and the surrounding countryside.

## ACCOMMODATION

The entrance to the property is gained via a communal door opening onto communal hall with stairs and lift to the second floor. The private front door entrance opens onto the spacious and light hallway with attractive herringbone style wood flooring and storage cupboard.

The accommodation comprises a spacious, dual aspect reception room with feature circular windows. The kitchen is fitted with a comprehensive range of wall and base units with granite work surface over. Integrated appliances include washer/dryer fridge/freezer, dishwasher, double oven and gas hob with extractor over. There is also room for a dining room table within the kitchen. Located on this floor are a good size study/bedroom with built in storage and fully tiled bathroom.

Stairs lead to a further floor with landing space offering further storage and access to the principal bedroom. The dual aspect bedroom is generous in size with extensive

built-in storage cupboards. Access to a fully tiled en-suite shower room with a double cubicle.

Accessed via a spiral staircase a charming sun room with panoramic views of Poundbury and the surrounding countryside.

## OUTSIDE

The property has two allocated parking spaces situated in the courtyard.

## DIRECTIONS

What3words///belt.tangent.positive

## SITUATION

The penthouse is situated in a convenient location close to Queen Mother Square, which provides a good range of amenities including Waitrose, 20-bedroom Duchess of Cornwall Inn, Luxury Monart Spa, butchers, gallery, coffee houses and restaurants. Across the Poundbury development there are a variety of boutiques, a veterinary practice, dentist surgery and doctor's surgery along with several specialist outlets.

## SERVICES

Mains electric, gas, water and drainage. Gas fired central heating.

Broadband - Superfast 80mbps speed available  
Mobile - There is mobile coverage in the area, please refer to Ofcom's website for more details.  
(<https://www.ofcom.org.uk>)

## MATERIAL INFORMATION

Council Tax Band C  
EPC C

### Lease Details

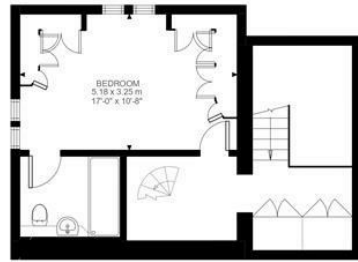
125 years from 22/04/2008 with 223 years remaining  
Service Charge - £4,688.00 per annum  
Ground rent - We are informed by our client that the ground rent is £125.00 per annum  
Management Company - Templehill Property  
Contact: 01305 751772

Manco 3- £232.00 per annum

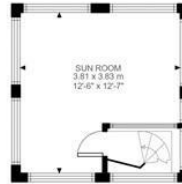




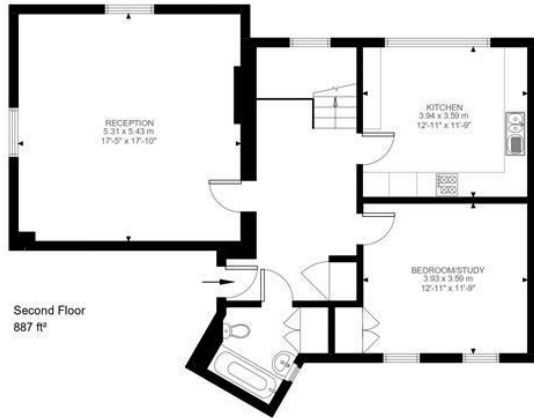
Energy Efficiency Rating		
Very energy efficient - lower running costs		
A++ (91-100)		
A+ (81-90)		
A (71-80)		
B (61-70)		
C (51-60)		
D (41-50)		
E (31-40)		
F (21-30)		
G (1-20)		
Not energy efficient - higher running costs		
England & Wales		
EU Directive 2002/91/EC		



Third Floor  
448 ft²



Fourth Floor  
171 ft²



Second Floor  
887 ft²

Woodville Court, DT1  
Approximate Gross Internal Area  
139.95 SQ.M / 1506 SQ.FT



Illustration for identification purposes only. Not to scale.  
Floor Plan Drawn According To RICS Guidelines.

Poundbury/PGS/10.11.2025



01305 251154

poundbury@symondsandsampson.co.uk  
Symonds & Sampson LLP  
Arch Point House, 7 Queen Mother Square,  
Poundbury, Dorset DT1 3BY



Important Notice: Symonds & Sampson LLP and their Clients give notice that: 1. They have no authority to make or give any representations or warranties in relation to the property. These particulars do not form part of any offer or contract and must not be relied upon as statements or representations of fact. 2. Any areas, measurements or distances are approximate. The text, photographs and plans are for guidance only and are not necessarily comprehensive. It should not be assumed that the properties have all necessary planning, building regulation or other consents and Symonds and Sampson LLP have not tested any services, equipment or facilities. 3. We have not made any investigation into the existence or otherwise of any issues concerning pollution of the land, air or water contamination and the purchaser is responsible for making his/her own enquiries in this regard. 4. The property is sold subject to and with the benefit of all existing wayleaves, easements and rights of way whether public or private, specifically mentioned or not. The vendors shall not be required to define any such rights, privileges or advantages.

SALES | LETTINGS | AUCTIONS | FARMS & LAND | COMMERCIAL | NEW HOMES | PLANNING & DEVELOPMENT