

Symonds  
& Sampson

Symonds  
& Sampson

01305 251154

FOR SALE

Last one remaining

BOARDMAN  
FIELDS

# 2 Boardman Fields

Chickerell, Weymouth, Dorset



# 2 Boardman Fields

Chickerell  
Weymouth  
Dorset DT3 4GZ

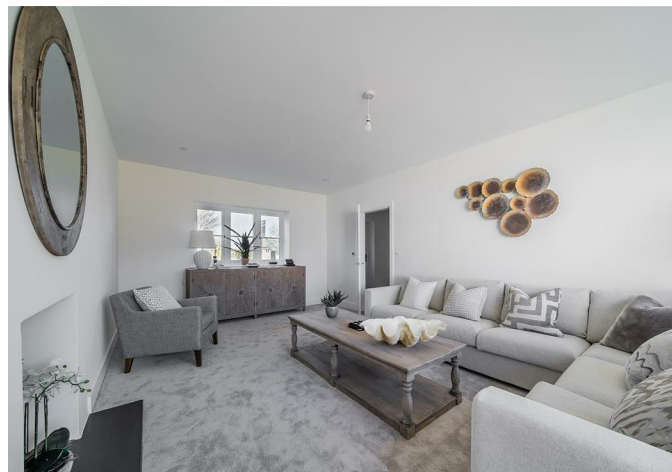
Beautifully presented four bedroom detached home on exclusive private development of 9 brand new properties at Boardman Fields in Chickerell, within easy reach of the Fleet and Jurassic coast.



- Exclusive development of 9 brand new detached homes
  - Private cul-de-sac at Chickerell
  - Luxury shaker style kitchen/dining/family room
    - Coloured UPVC windows
- Gas fired central heating with underfloor heating to ground floor
- Landscaped garden with patio and lawned gardens
  - Garage and driveway
- 10 year Build-Zone Warranty
  - House build complete

Guide Price £525,000

Freehold  
Poundbury Sales  
01305 251154  
[poundbury@symondsandsampson.co.uk](mailto:poundbury@symondsandsampson.co.uk)



## THE PROPERTY

Boardman Fields is an exclusive development of three detached houses situated in a select cul-de-sac in Chickerell, Weymouth. 2 Boardman Fields is the show home and as you would expect, it is beautifully presented with a host of contemporary features.

The purchase includes carpets in the sitting room and bedrooms, a tiled hallway and bathrooms, Luxury Amtico Spacia oak-effect flooring in the kitchen and gas-fired underfloor heating on the ground floor.

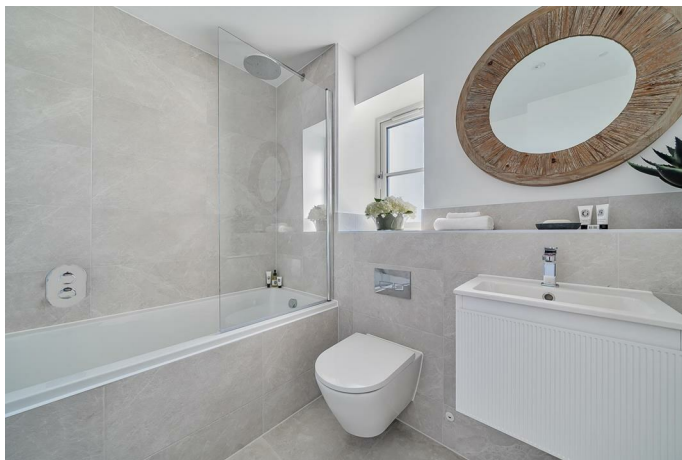
## THE ACCOMMODATION

A welcoming tiled entrance hallway has a downstairs cloakroom and stairs leading to the first floor with understairs cupboard. A spacious double-aspect sitting room has large patio doors opening out to a sun terrace with a westerly-facing aspect. The kitchen/dining/family room is a particular feature and perfect for modern living with an abundance of natural light from a double aspect with matching patio doors opening to the rear garden. The kitchen is beautifully presented, installed by Kitchen Elegance of Poole with an extensive range of Shaker style wall and floor cupboards with stone worktops and central island. The kitchen comes complete with fitted appliances comprising a double electric combination Neff oven, electric hob, integrated dishwasher and fridge/freezer. Attractive Amtico flooring runs throughout the room and into a separate utility room housing the gas-fired boiler.

On the first floor, a spacious landing has access to loft space and a contemporary fitted family bathroom. There are four double bedrooms with the main bedroom having the benefit of built-in wardrobes and an en-suite shower room. The rear bedroom enjoys far-reaching views including distant sea views of Chesil beach.







## OUTSIDE

The gardens have been carefully landscaped with lawned gardens to both the front and rear. The rear garden enjoys a favoured westerly facing aspect with an Indian Sandstone paved sun terrace with steps leading onto enclosed lawned gardens. A paved path at the rear leads to the garage with personal rear door, power and light. To the front of the garage is a gravelled drive for off road parking.

## SITUATION

Chickerell lies on the outskirts of the popular coastal town of Weymouth and close to the World Heritage Jurassic

Coastline which includes the famous Chesil Beach which stretches along the coast to Lyme Regis. Chickerell itself is much sought after with the area boasting a vibrant and active community and a wide range of amenities and facilities including both primary and secondary schools, a general store with Post Office, village hall, chemist, two public houses and Budmouth community sports centre with 3G sports pitches.

The nearby coastline has a network of footpaths which provide the opportunity to enjoy good coastal walks and breath-taking views along the Fleet Lagoon. Weymouth

town centre can be found within 3 miles and provides a wider range of shopping facilities, eateries, as well as a the sandy beach, picturesque inner harbour and a main line rail station providing links to London Waterloo and Bristol Temple Meads.

## DIRECTIONS

What3words:///from.tastings.lamplight

## SERVICES

Mains gas, electric and drainage. Gas fired underfloor heating to the ground floor. Radiators to the first floor. Broadband: We are informed that there are Ultrafast





speeds in the area.

Mobile Phone: Network coverage is reported to be good indoors and out (Information from <https://www.ofcom.org.uk>)

Local Authority: Dorset Council Tel 01305 251010

Council Tax: New Build rate not available yet

EPC: New build Sap rating to be updated

## MATERIAL INFORMATION

Warranty: 10 year Build-Zone Warranty

Security: Fitted with intruder alarm

## ROOM MEASUREMENTS

Living Room - 3760mm x 6440mm

Kitchen/Dining/Family Room - 4270mm x 8265mm

Utility Room - 1500mm x 2010mm

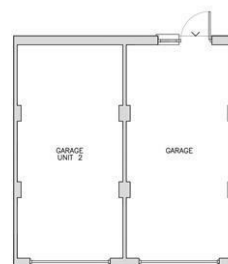
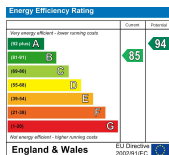
Bedroom 1 - 3495mm x 3630mm

Bedroom 2 - 2970mm x 3760mm

Bedroom 3 - 2810mm x 2770mm

Bedroom 4 - 2720mm x 2633mm

Garage - 3000mm x 5055mm



UNIT 2



PoundburyDW/10.02.2025



01305 251154

poundbury@symondsandsampson.co.uk  
Symonds & Sampson LLP  
Arch Point House, 7 Queen Mother Square,  
Poundbury, Dorset DT1 3BY



Important Notice: Symonds & Sampson LLP and their Clients give notice that: 1. They have no authority to make or give any representations or warranties in relation to the property. These particulars do not form part of any offer or contract and must not be relied upon as statements or representations of fact. 2. Any areas, measurements or distances are approximate. The text, photographs and plans are for guidance only and are not necessarily comprehensive. It should not be assumed that the properties have all necessary planning, building regulation or other consents and Symonds and Sampson LLP have not tested any services, equipment of facilities. 3. We have not made any investigation into the existence or otherwise of any issues concerning pollution of the land, air or water contamination and the purchaser is responsible for making his/her own enquiries in this regard. 4. The property is sold subject to and with the benefit of all existing wayleaves, easements and rights of way whether public or private, specifically mentioned or not. The vendors shall not be required to define any such rights, privileges or advantages.

**SALES | LETTINGS | AUCTIONS | FARMS & LAND | COMMERCIAL | NEW HOMES | PLANNING & DEVELOPMENT**