



Plot 137, 7 Loveridge Grove, Nottingham Park, Weymouth, Dorset

A three bedroom detached house with a main bedroom en-suite, bathroom, kitchen/ dining room, living room, garage and parking space.

Guide Price

£460,000

Freehold

CG FRY & SON
ESTATE AGENTS
About this home
3 Double bedrooms
21 square metres more
with the floor and fitted appliances
Garden, WC, bathroom
bedroom 1 en suite
Tiled and grout, garage and parking
www.cgfryston.co.uk

CG FRY & SON
ESTATE AGENTS
PLOT 137
3 Bed
FOR SALE
www.cgfryston.co.uk

**Symonds
& Sampson**
ESTABLISHED 1858

Plot 137, 7 Loveridge Grove, Nottingham Park, Weymouth, Dorset, DT3 5DF

- Plot 137 - flooring included.
- The house build is complete
 - 2 storey detached house
- 3 double bedrooms, including principal bedroom with en-suite
 - Enclosed garden
 - Garage and one parking space
- Council Tax Banding – Banding TBC
 - EPC B
- Stamp duty paid to the value of £10,500 until 20th July 24
 - Please call Symonds & Sampson Poundbury office on 01305 251154

Viewing strictly by appointment
Symonds & Sampson
01305 251154





Plot 137 is constructed with rendered elevations under a slate roof with accommodation arranged over two floors comprising of three bedrooms and two bathrooms, garage and one parking space.

On the ground floor, a welcoming entrance hall with useful downstairs cloakroom and understairs storage cupboard, leads into a front sitting room. The open plan kitchen/dining room will be fitted with attractive wall and floor cupboards with worksurfaces over. There will be a range of integrated appliances and, glazed doors from the dining room area to the garden. On the first floor are three double bedrooms with the principal bedroom benefitting from an en-suite shower room, a contemporary fitted bathroom suite, airing cupboard and hatch to a loft space.

Externally, shrub and flower borders to the front. A timber gate to the side with access to the enclosed lawned garden with a paved area. Garage to the rear with parking area for one car.

The property will include a NHBC 10-year warranty and benefits from a gas fired central heating system.

Please Note: The drawings and particulars are for illustrative purposes only and shall not form part of any contract. Example images on the brochure are from plot 137 except the garden which is for illustrative purposes.

Situation

Nottingham Park is conveniently situated on the edge of Nottingham village and in a conservation area. This exciting development is designed around green open spaces, tree lined avenues, woodland play area and walkways. Nottingham Park offers the perfect setting for those looking to enjoy the benefits of a low-maintenance, energy-efficient new home set in the Dorset countryside nestled just off the world-famous Jurassic coast.

A good range of amenities can be found within approximately 1 mile including a general store, petrol

station, florist, veterinary clinic, supermarket and sport centre, all located on Dorchester Road. There are also both primary and secondary schools close by. The location also allows easy access to the Dorset Countryside, with Lorton Meadows a short walk away, perfect for dog walking and family strolls through peaceful meadows and woodland.

Weymouth town centre can be found within approximately 2 miles and offers a comprehensive range of shops, marina and picturesque harbour, blue flag sandy beach and a range of recreational and cultural facilities. The area also provides the opportunity to enjoy a range of sailing and water sports activities, beaches and walks along the World Heritage Jurassic. There is a mainline rail station at Upwey, approximately ¾ of a mile from the property which offers rail links to Dorchester, Bournemouth, London Waterloo and Bristol Temple Meads.

Services

Mains gas, electric, water and drainage. Gas fired central

heating system.

Local Authority
Dorset Council - Tel: 01305 251010

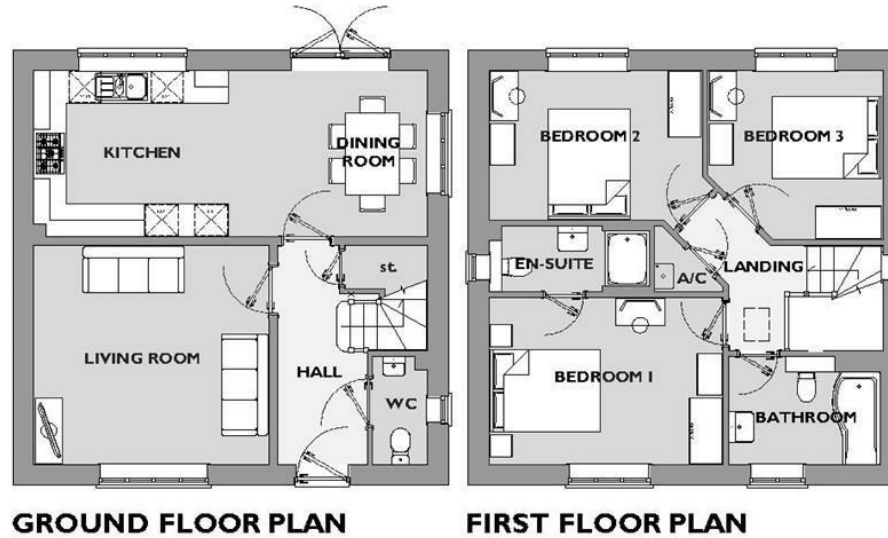
Council tax band – new build to be assessed
EPC band - B

Estate management charge
£171.03 per annum

Tenure
Freehold

Directions

From Dorchester take the A354 Weymouth relief road, signposted to Weymouth. At the first roundabout take the 2nd exit signed Weymouth. Continue for about 2 miles and at the 2nd roundabout take the 3rd exit signed Upwey. Proceed along this road, taking the third left hand turning, signed Nottingham and take the left hand turn into the development.



PLOT 137

THREE BEDROOM HOME

FIRST FLOOR

Bedroom 1
4.27 x 3.06m (14' x 10'1ft max)

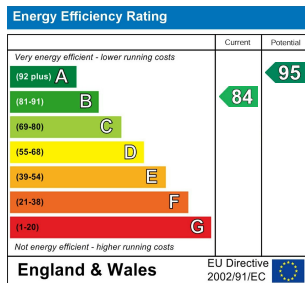
Bedroom 2
3.89 x 2.73m (12'9 x 9ft max)
(Dimensions excluding door recess)

Bedroom 3
3.2 x 3.08m (10'6 x 10'2ft)
(Dimensions excluding door recess)

GROUND FLOOR

Living Room
4.30 x 4.03m (14'1 x 13'3ft max)

Kitchen / Dining Room
7.19 x 3.03m (23'7 x 10'0ft max)



Poundbury/PGS/13.06.24rev

01305 251154
Arch Point House 7 Queen Mother Square
Poundbury
Dorset
DT1 3BY
poundbury@symondsandsampson.co.uk

Symonds & Sampson
ESTABLISHED 1858

IMPORTANT NOTICE: Symonds & Sampson LLP and their Clients give notice that:

1. They have no authority to make or give any representations or warranties in relation to the property. These particulars do not form part of any offer or contract and must not be relied upon as statements or representations of fact. 2. Any areas, measurements or distances are approximate. The text, photographs and plans are for guidance only and are not necessarily comprehensive. It should not be assumed that the property has all necessary Planning, Building Regulation or other consents, and Symonds & Sampson have not tested any services, equipment, or facilities.

