



## 8 Boardman Fields, Chickerell, Weymouth, Dorset

An impressive development of 9 brand new detached bungalows and houses situated in an exclusive, private cul-de-sac on the outskirts of Chickerell village within easy reach of the Fleet and Jurassic coast.

Asking Price

**£600,000**

Freehold



## 8 Boardman Fields, Chickerell, Weymouth, Dorset, DT3 4BA

- Exclusive development of 6 brand new detached bungalows and 3 detached houses
- Private cul-de-sac location on outskirts of Chickerell
- Luxury fitted shaker style kitchen/ family room with integrated appliances
- Three bedrooms with en-suite shower room and family bathroom
  - Coloured UPVC windows
  - Gas fired underfloor heating throughout
  - Fitted intruder alarm
- Landscaped rear garden with Indian Sandstone patio and lawned garden
  - Detached garage and driveway
  - 10 year Build-Zone Warranty

Viewing strictly by appointment  
Symonds & Sampson  
01305 251154





### The Property

Boardman Fields is an exclusive development of six detached bungalows and three detached houses situated in a select cul-de-sac location at Chickerell, Weymouth.

Phase 1, plots 3-8 are offered for sale with guide prices from £595,000. Each bungalow is beautifully crafted offering an abundance of light and space with a plethora of luxury specifications.

Plot 8 - On entering the spacious and bright hallway, the accommodation comprises of a separate sitting room to the front. A stunning open-plan kitchen/dining/family room is a particular feature with access leading to the enclosed garden. Luxury fitted shaker style kitchens have central island, by Kitchen Elegance with stone worktops, integrated Neff oven and combination microwave oven, induction hob, integrated fridge/freezer and dishwasher. Luxury Amtico flooring runs throughout the room. There are three bedrooms with en-suite shower room to the main bedroom, together with a family bathroom. All bedrooms come with built-in wardrobes.

The purchase includes carpets to the sitting room and bedrooms. Tiled hallway and bathrooms. Luxury Amtico Spacia oak effect flooring to the kitchen. Gas-fired underfloor heating throughout.

Outside gardens come landscaped with Indian Sandstone patio and lawned rear garden, gravelled driveway and detached garages with power and light.

### Situation

Chickerell lies on the outskirts of the popular coastal town of Weymouth and close to the World Heritage Jurassic Coastline which includes the famous Chesil Beach which stretches along the coast to Lyme Regis. Chickerell itself is much sought after with the area boasting a vibrant and active community and a wide range of amenities and facilities including both primary and secondary schools, a general store with Post Office, village hall, chemist, two public houses and Budmouth community sports centre with 3G sports pitches.

The nearby coastline has a network of footpaths which provide the opportunity to enjoy good coastal walks and

breath-taking views along the Fleet Lagoon. Weymouth town centre can be found within 3 miles and provides a wider range of shopping facilities, eateries, as well as the sandy beach, picturesque inner harbour and a main line rail station providing links to London Waterloo and Bristol Temple Meads.

### Specification

#### Kitchen

Luxury fitted shaker style kitchen with central island, by Kitchen Elegance  
 Stone worktops and integrated appliances  
 Neff single oven  
 Neff combination microwave oven  
 Induction hob  
 Integrated fridge/freezer  
 Luxury Amtico Flooring

#### Flooring

Carpets to the snug and bedrooms  
 Tiled hallway and bathrooms  
 Luxury Amtico Spacia oak effect flooring to the kitchen



### Bathrooms

Bathrooms by the BigBath Company  
Sanitaryware by Duravit and Saneux  
Wall hung vanity units  
Vado brassware  
Porcelanosa tiling  
Shaver point

### Outside

Coloured UPVC windows  
Indian Sandstone patio and turf to rear garden  
Sliding doors from kitchen to patio  
Gravel driveways. Detached garages with power and light

### Services

Mains gas, electric and drainage. Gas fired underfloor heating throughout

Broadband: We are informed that there are Ultrafast speeds in the area.

Mobile Phone: Network coverage is reported to be good indoors and out (Information from <https://www.ofcom.org.uk>)

Warranty: 10 year Build-Zone Warranty

Security: Fitted with intruder alarm

Local Authority: Dorset Council Tel 01305 251010

Council Tax: New Build rate not available yet

EPC: New build Sap rating to be updated

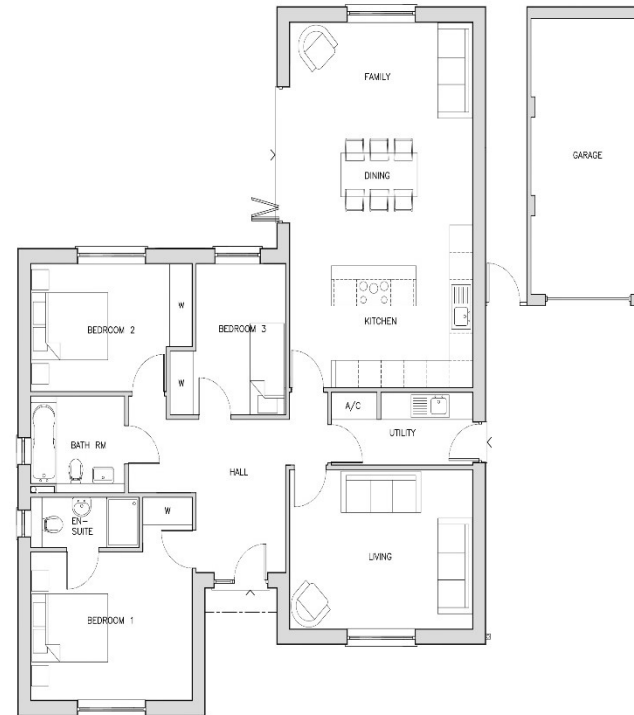
### Please Note

The drawings and particulars are for illustrative purposes only and shall not form part of any contract. Example images on the brochure are from a typical show home.

### Directions

What3words  
from.tastings.lamplight

Poundbury/DW/17.04.24



UNIT 8

Nord Homes



01305 251154

Arch Point House 7 Queen Mother Square  
Poundbury

Dorset

DT1 3B

[poundbury@symondsandsampson.co.uk](mailto:poundbury@symondsandsampson.co.uk)

IMPORTANT NOTICE: Symonds & Sampson LLP and their Clients give notice that:

1. They have no authority to make or give any representations or warranties in relation to the property. These particulars do not form part of any offer or contract and must not be relied upon as statements or representations of fact. 2. Any areas, measurements or distances are approximate. The text, photographs and plans are for guidance only and are not necessarily comprehensive. It should not be assumed that the property has all necessary Planning, Building Regulation or other consents, and Symonds & Sampson have not tested any services, equipment, or facilities.

