



**9 Meadow View Close, Newport, TF10 7NN**  
**£995 Per Calendar Month**

We are pleased to offer this spacious three bedroom house located in a small cul-de-sac. The excellent bedroom sizes are complimented with a generous lounge that benefits from doors leading to the garden, separate dining room and modern kitchen. There is also an integral garage and good off-road parking for a number of vehicles.



## Hall

## Lounge



## Dining Room

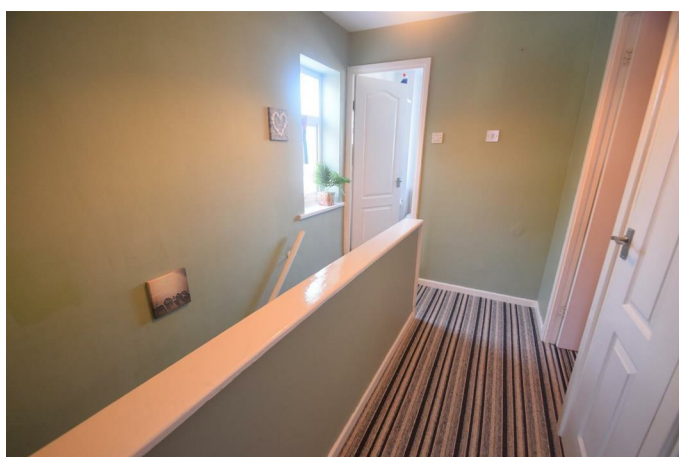


## Kitchen



## Integral Garage

## Landing



## Bedroom One

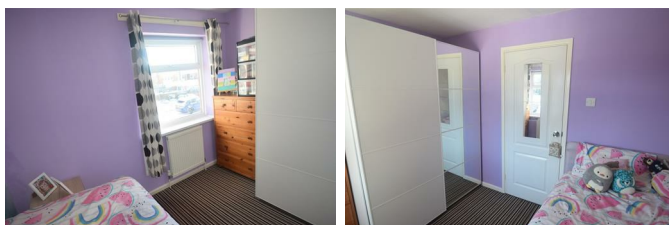


## Bedroom Two



With fitted wardrobes

## Bedroom Three



## Bathroom



With shower over the bath

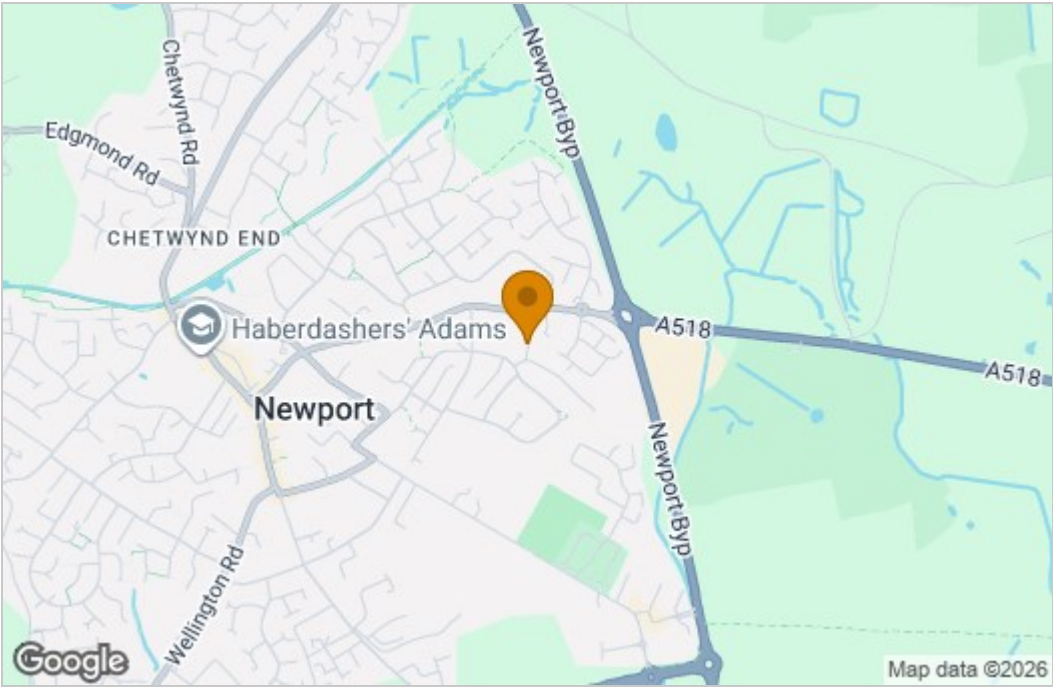
## Outside



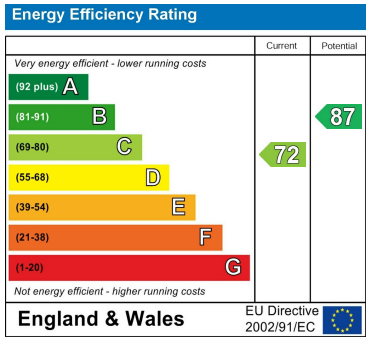
There is an enclosed that is accessible from both the lounge and kitchen. To the front is off-road parking for a number of vehicles.

Floor Plan

Area Map



Energy Efficiency Graph



These particulars, whilst believed to be accurate are set out as a general outline only for guidance and do not constitute any part of an offer or contract. Intending purchasers should not rely on them as statements of representation of fact, but must satisfy themselves by inspection or otherwise as to their accuracy. No person in this firms employment has the authority to make or give any representation or warranty in respect of the property.