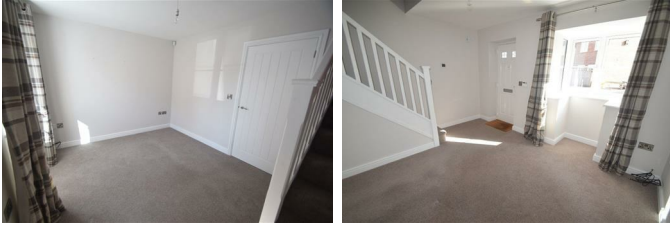




**4 The Cottage Gardens, Wellington Road, Telford, TF2 8FA**  
**£875 Per Calendar Month**

A real gem. This two bedroom property is one of a small number of homes in this modern development and is sure to be popular. The two double bedrooms are complimented by a modern bathroom, good sized kitchen diner, great outdoor space & allocated off-road parking. Viewing is essential.

## Lounge



## Kitchen Diner



## WC

## Walk In Storage Cupboard

## Bedroom One



with built in wardobes

## Bedroom Two



## Bathroom



with shower over the bath

## Outside



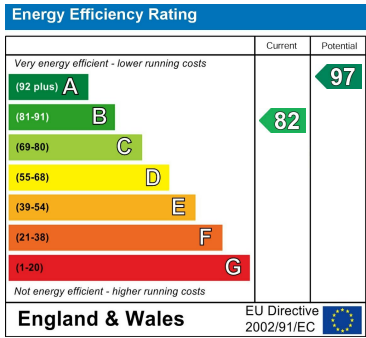
the property also benefits from low maintenance artificial grass.

Floor Plan

Area Map



Energy Efficiency Graph



These particulars, whilst believed to be accurate are set out as a general outline only for guidance and do not constitute any part of an offer or contract. Intending purchasers should not rely on them as statements of representation of fact, but must satisfy themselves by inspection or otherwise as to their accuracy. No person in this firms employment has the authority to make or give any representation or warranty in respect of the property.