



20 Hendrick Crescent, Shrewsbury, SY2 6JF
£1,050 Per Calendar Month

Occupying an excellent position on this modern development this house ticks all the boxes including a lovely outlook to the front. Key features include a modern kitchen with integrated appliances & a master bedroom with en-suite and spacious lounge diner. Early viewing is highly recommended!

Hall

WC

Kitchen



With Integrated Appliances

Lounge Diner



With Doors Leading To The Garden

Master Bedroom



En-Suite Shower Room

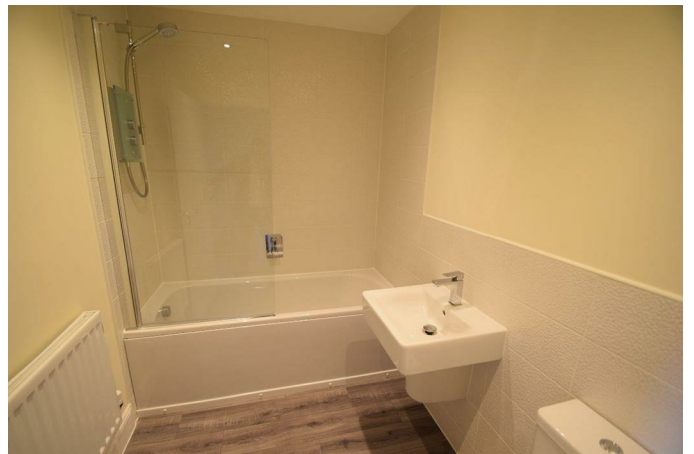


Bedroom Two



Bedroom Three

Bathroom



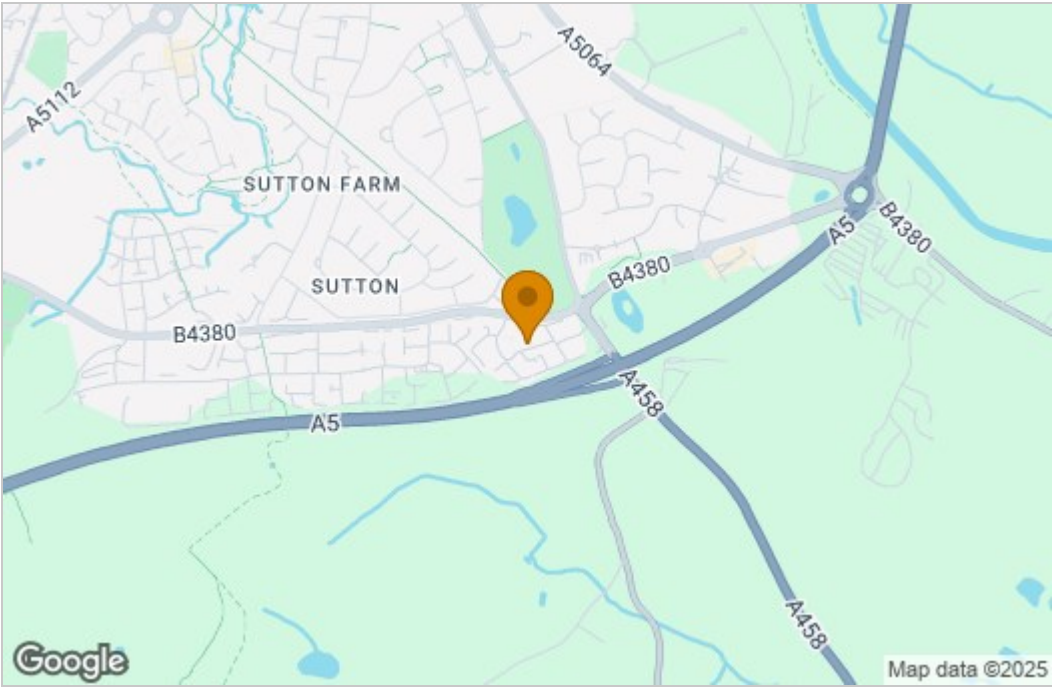
Outside



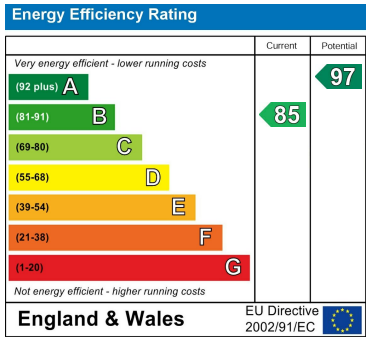
There is a pleasant rear garden and off-road parking.

Floor Plan

Area Map



Energy Efficiency Graph



These particulars, whilst believed to be accurate are set out as a general outline only for guidance and do not constitute any part of an offer or contract. Intending purchasers should not rely on them as statements of representation of fact, but must satisfy themselves by inspection or otherwise as to their accuracy. No person in this firms employment has the authority to make or give any representation or warranty in respect of the property.