



22 Underhill Close, Newport, TF10 7EB

£95,000

Located in the heart of Newport, this well looked after ground-floor apartment boasts a recently modernized kitchen and bathroom, spacious living area and two bedrooms. This property would make an ideal purchase for first time buyers or as an addition to your property portfolio.

Hallway

L-shaped hallway giving access to all living accommodation, storage cupboard and intercom system.

Kitchen

Modern fitted kitchen with grey high gloss wall and base units, topped with black high shine worksurfaces. Featuring an integrated oven, induction hob and overhead extractor hood, sink drainer and plumbing for the likes of a washing machine/tumble dryer. The coloured tiles, central light fitting and under lights brighten the room, with added natural light from the front facing UPVC double-glazed window. There is a fitted water softener and purifier under the kitchen sink.

Lounge

Spacious living area, with large front-facing UPVC double-glazed window, electric feature fireplace, wood laminate flooring, central light fitting, TV and telephone points.

Master Bedroom

Rear elevation double bedroom, large UPVC double-glazed window, built-in wardrobe with sliding doors, and central light fitting.

Bedroom Two



Rear elevation single bedroom, with UPVC double-glazed window, built-in wardrobe with sliding doors, and central light fitting.

Shower Room



Generous sized shower room, featuring a large walk-in shower with both overhead and handheld shower heads. Grey wood-effect laminate flooring and white part tiled walls. Low-level flush WC and sink unit, with wall-mounted vanity unit. Chrome heated towel rail, central light fitting and extractor fan.

Outside

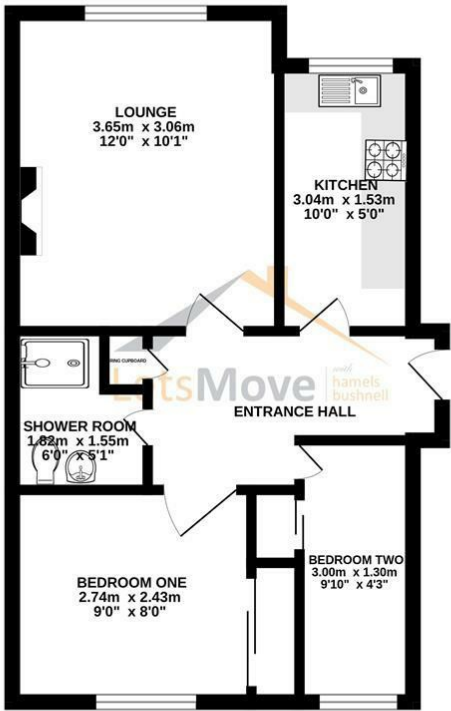
Shared outdoor lawn space to the front and rear of the property. An allocated parking space with further visitor spaces available. Secure communal entrance.

Agent Notes

The property has no gas supply and is heated using storage heaters. Ground rent and service charges apply.

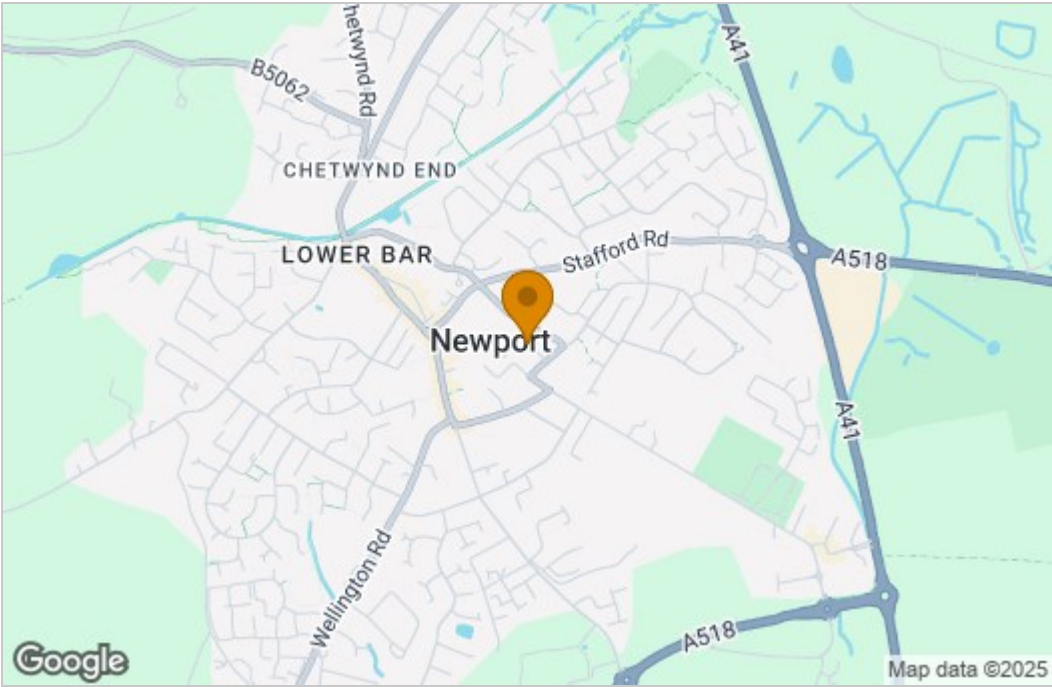
Floor Plan

GROUND FLOOR

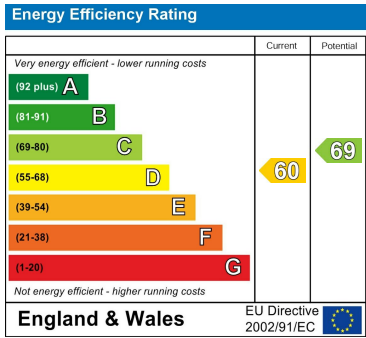


Measurements are approximate. Not to scale. Illustrative purposes only
Made with Metropix ©2024

Area Map



Energy Efficiency Graph



These particulars, whilst believed to be accurate are set out as a general outline only for guidance and do not constitute any part of an offer or contract. Intending purchasers should not rely on them as statements of representation of fact, but must satisfy themselves by inspection or otherwise as to their accuracy. No person in this firms employment has the authority to make or give any representation or warranty in respect of the property.