

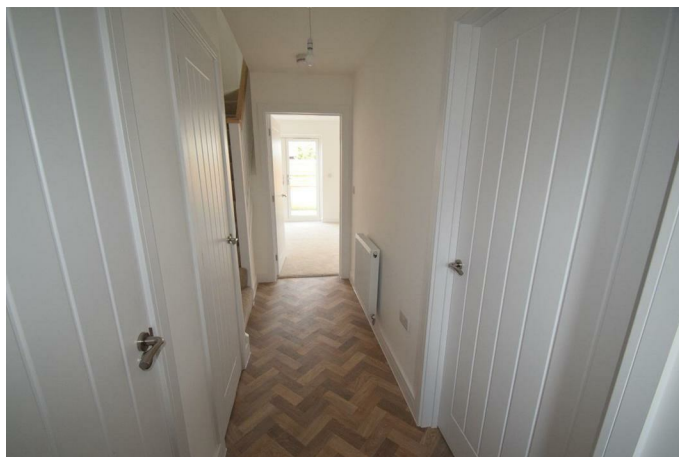


12 Sugar Beet Avenue, Telford, TF6 5FD

£1,050 PCM

We are excited to offer a beautifully presented home on this modern development. The three bedrooms are complimented by excellent & spacious living accommodation, two bathrooms, great storage & parking for two cars. Outside there is also an enclosed rear garden. Get in touch early.

Hall

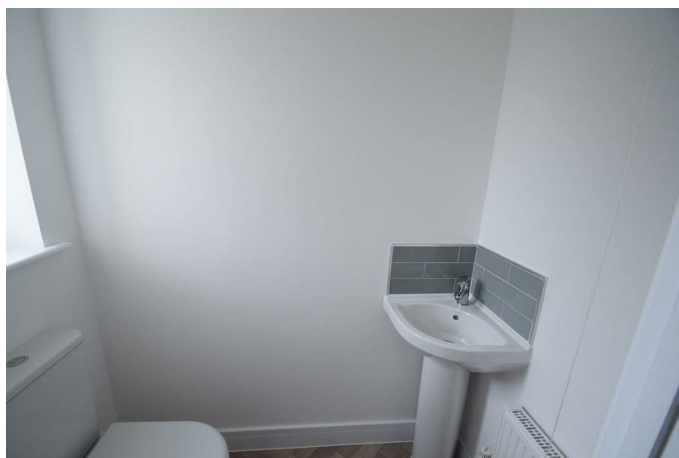


Kitchen Diner



With Integrated Fridge Freezer

WC



Bedroom One



En-Suite Shower Room



Storage Cupboard

Lounge



With Doors To The Garden & A Storage Cupboard

Bedroom Two



Bedroom Three



Bathroom



Landing Storage Cupboard

Outside



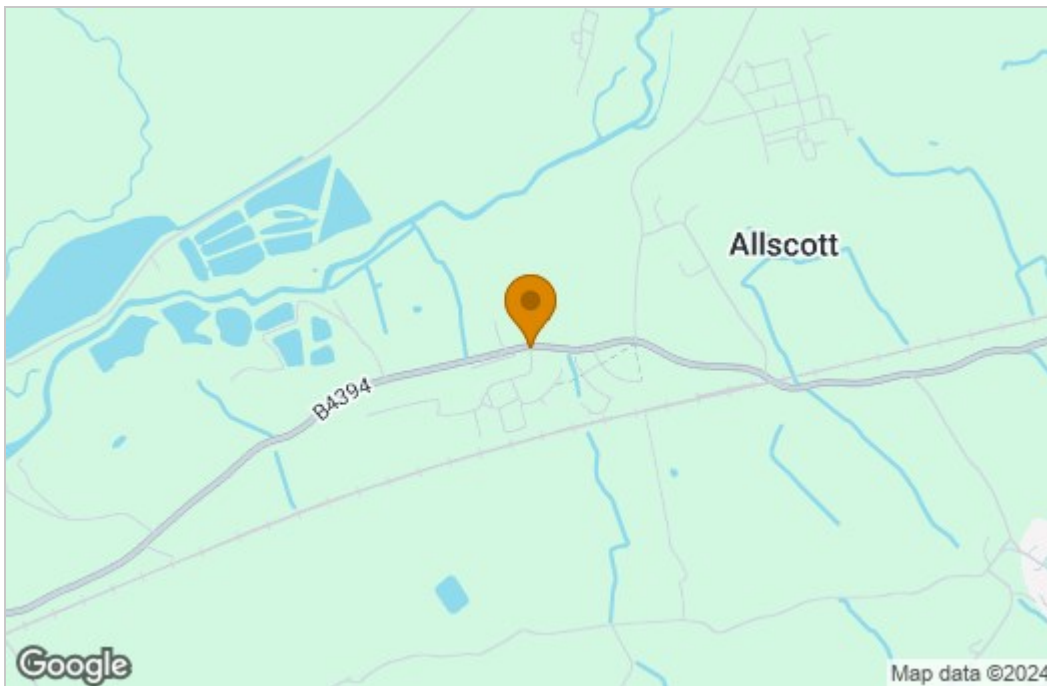
There is a enclosed rear garden and patio area. To the front is off road parking for two cars.

Agents Notes

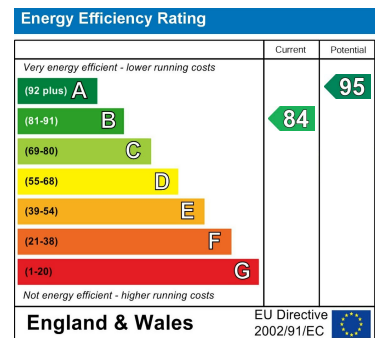
The property also benefits from gas central heating and double glazing.

Floor Plan

Area Map



Energy Efficiency Graph



These particulars, whilst believed to be accurate are set out as a general outline only for guidance and do not constitute any part of an offer or contract. Intending purchasers should not rely on them as statements of representation of fact, but must satisfy themselves by inspection or otherwise as to their accuracy. No person in this firm's employment has the authority to make or give any representation or warranty in respect of the property.