



70 George Wynn Way, Telford, TF2 9YB

£1,195 PCM

Contemporary with a touch of class. Located on the popular 'Abbey Walk' development this home ticks all the boxes and is not overlooked towards the front. With great living space, spacious kitchen diner, three bedrooms, two bathrooms, off road parking and private garden it really is a must see.

Hall

WC



Bedroom One



Lounge



With Storage

Kitchen Diner



With Integrated Appliances and French Doors To The Garden

En-Suite Shower Room



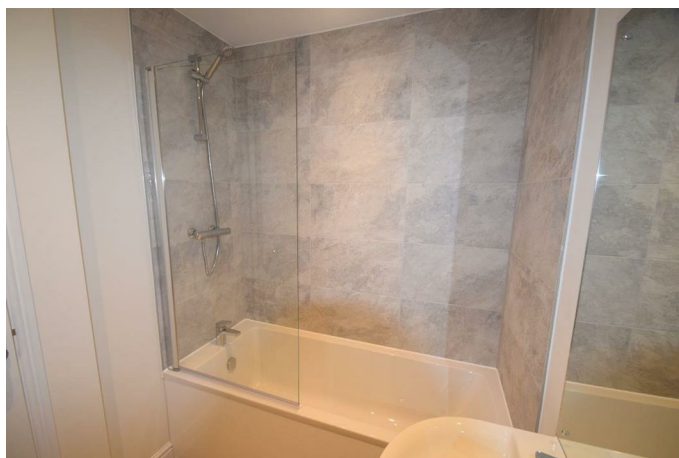
Bedroom Two



Bedroom Three



Bathroom



With Shower Over The Bath and Stainless Steel Towel Rail

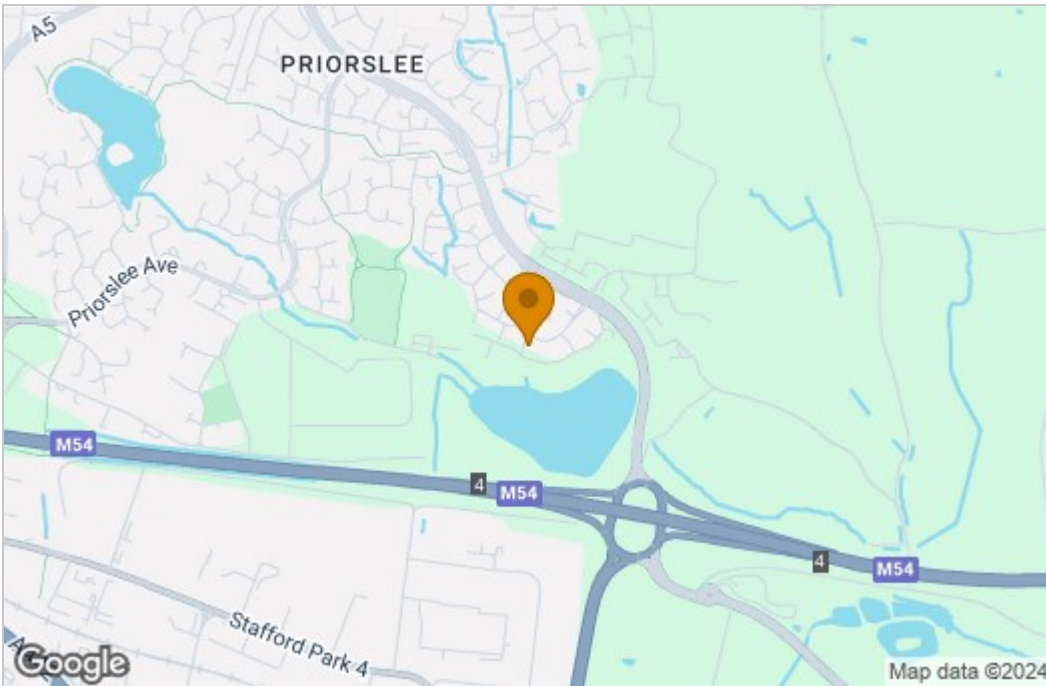
Outside



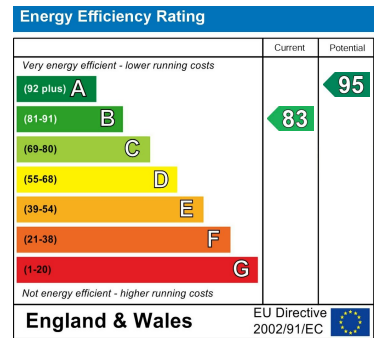
The front of the property has the benefit of two parking spaces directly outside and a pathway to the rear leads to the enclosed rear garden that has a patio area and storage shed.

Floor Plan

Area Map



Energy Efficiency Graph



These particulars, whilst believed to be accurate are set out as a general outline only for guidance and do not constitute any part of an offer or contract. Intending purchasers should not rely on them as statements of representation of fact, but must satisfy themselves by inspection or otherwise as to their accuracy. No person in this firm's employment has the authority to make or give any representation or warranty in respect of the property.