



8 Meadow View Close, Newport, TF10 7NN

£750 PCM

A great opportunity to rent a two bedroom house suitable for a variety of tenants. Located in a popular area & benefiting from being near the head of a cul-de-sac this house ticks all the boxes, including double bedrooms, spacious lounge diner & garden. Viewing is essential!

Hall

Kitchen



Lounge Diner



With understairs storage cupboard

Stairs & Landing



Bedroom One



Double

Bedroom Two



Double

Outside

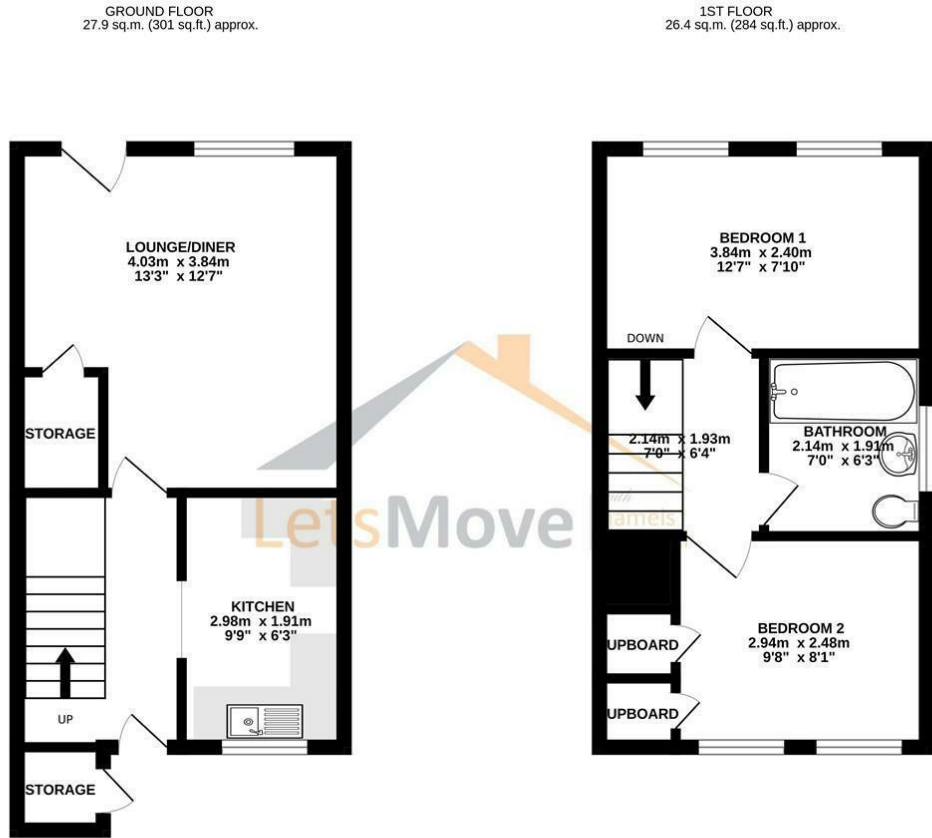


There is excellent off-road parking and established front and rear gardens which offers privacy.

Agents Notes

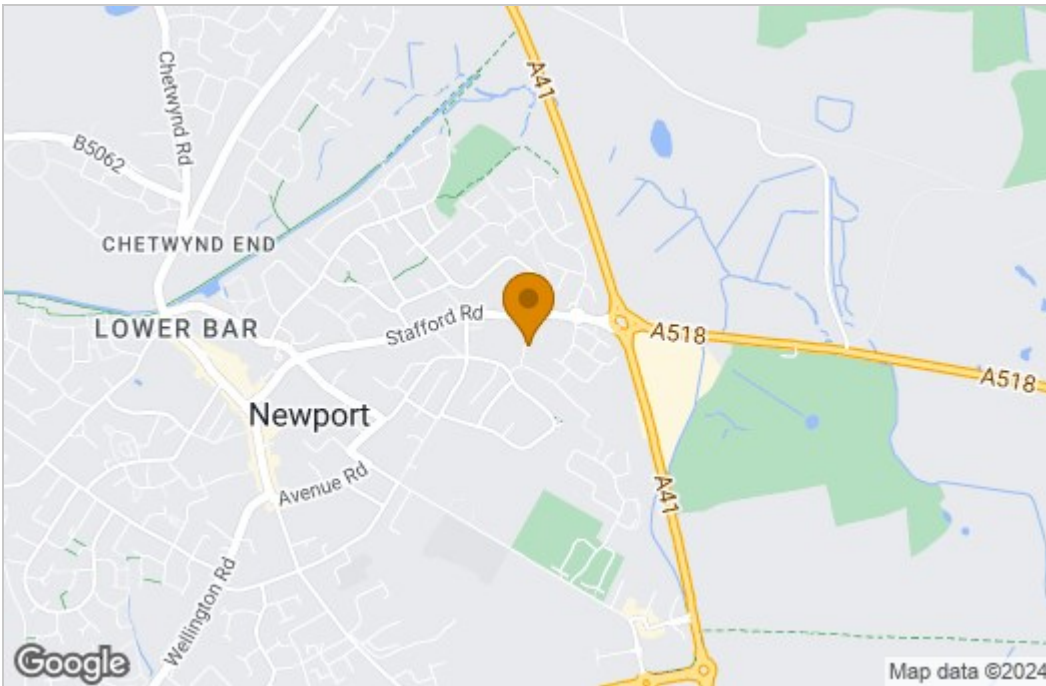
It is also worthy of note that the property has gas central heating and double glazing.

Floor Plan

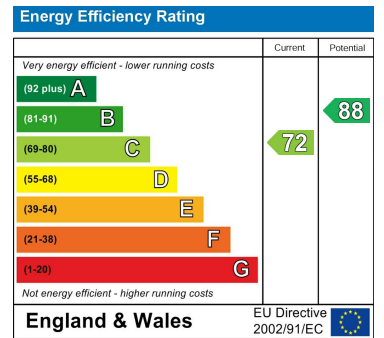


TOTAL FLOOR AREA: 54.3 sq.m. (584 sq.ft.) approx.
 Measurements are approximate. Not to scale. Illustrative purposes only.
 Made with Metropix ©2024

Area Map



Energy Efficiency Graph



These particulars, whilst believed to be accurate are set out as a general outline only for guidance and do not constitute any part of an offer or contract. Intending purchasers should not rely on them as statements of representation of fact, but must satisfy themselves by inspection or otherwise as to their accuracy. No person in this firm's employment has the authority to make or give any representation or warranty in respect of the property.