



## **8 Meadow View Close, Newport, TF10 7NN**

**£177,500**

Located in a peaceful neighbourhood on the edge of Newport, this two-bedroom property offers a sense of privacy while still being part of a friendly community. Whether you're a first-time buyer or a small family, this house has the potential to be the perfect fit for you.

### Hallway

Entering through a UPVC partial glazed front door, to a hallway leading to all ground floor accommodation.

### Kitchen 6 x 10 (1.83m x 3.05m)

Front facing fitted kitchen with wood effect wall and base units, topped with grey worksurfaces. Black laminate tile-effect flooring and white tiled splash zones. Integrated stainless steel sink and drained beneath a UPVC double-glazed window. Plumbing for further appliances.

### Lounge Diner 13 x 13 (max) (3.96m x 3.96m (max))

A spacious carpeted living area, with under-stairs storage cupboard, access to the rear garden via UPVC glazed door and further UPVC double-glazed window allowing lots of natural light. Central light fitting and radiator.

### Stairs and Landing

Carpeted stairway leading to first floor landing.

### Bedroom One 13 x 8 (3.96m x 2.44m)



Rear elevation double bedroom featuring two UPVC double-glazed windows, radiator and central light fitting.

### Bedroom Two 10 x 8 (3.05m x 2.44m)



Front elevation double bedroom. with two UPVC

double-glazed windows, radiator and central light fitting. Also featuring two storage cupboards.

### Bathroom 7 x 6 (2.13m x 1.83m)



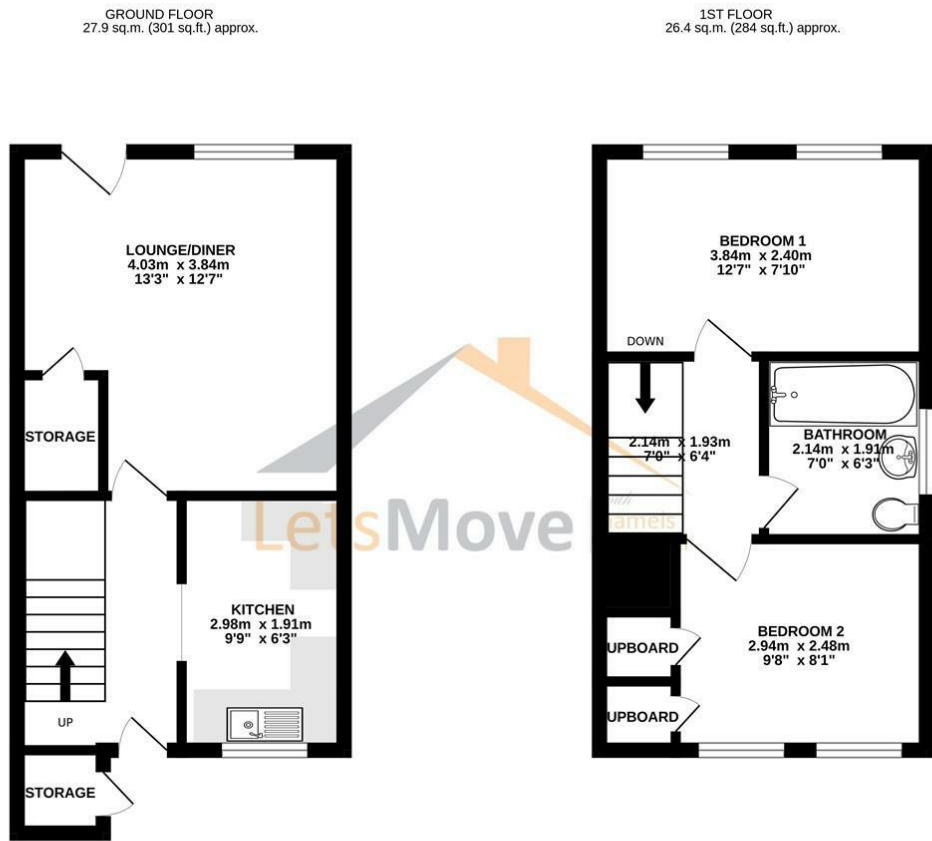
Featuring a fitted panel bath with overhead electric shower and tiled surrounding walls. White low-level flush WC and pedestal basin. Central light fitting, radiator and frosted glass UPVC window.

### Outside

Private rear garden with both lawn and patio areas,. Side access via wooden gate leading to the driveway and front of the property. Further lawn area to the front of the property, lined with hedges and patio walkway to the front door. Storage cupboard at the front of the property.



# Floor Plan

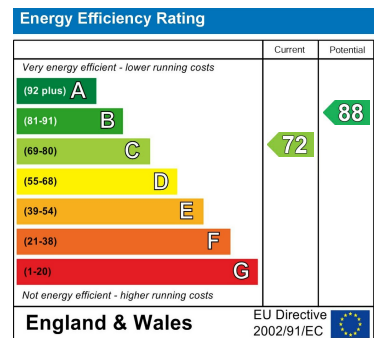


TOTAL FLOOR AREA: 54.3 sq.m. (584 sq.ft.) approx.  
 Measurements are approximate. Not to scale. Illustrative purposes only.  
 Made with Metropix ©2024

# Area Map



# Energy Efficiency Graph



These particulars, whilst believed to be accurate are set out as a general outline only for guidance and do not constitute any part of an offer or contract. Intending purchasers should not rely on them as statements of representation of fact, but must satisfy themselves by inspection or otherwise as to their accuracy. No person in this firm's employment has the authority to make or give any representation or warranty in respect of the property.