



22 Audley House Mews Audley Avenue, Newport, TF10 7BP

£120,000

Nestled in the quiet area of Audley House Mews, this ground floor bungalow is a hidden gem. With its spacious living accommodation, this property would make an ideal purchase for first time buyers or as an addition to your property portfolio.

Hallway

Spacious entrance hall with built-in storage cupboard, central light fitting, access to loft via hatch and giving access to all living accommodation.

Kitchen/Diner



Generous sized room featuring grey tiled floor and mosaic style tiled splashback, ample storage space from wood effect wall and base units topped with black laminate worksurfaces, integrated Sterling gas hob and oven, one and a half sink drainer located beneath one of two UPVC double glazed windows, plumbing for further appliances, two radiators and ceiling light fittings.

Living Room



Good sized living area featuring wooden flooring, dual aspect external doors with side panel windows providing lots of natural light, radiator, ceiling light fittings and TV point.

Bedroom



Large double room with spacious built-in wardrobe, two feature windows and integrated spotlights make the room bright and airy, radiator.

Bathroom



Spacious bathroom comprising of a white suite with low level flush WC, basin and bath with an overhead chrome shower, glass shower screen and partial tiled walls, tiled flooring, extractor fan and boiler.

Outside

Allocated parking space to the front of the property. Communal outdoor areas and driveway.

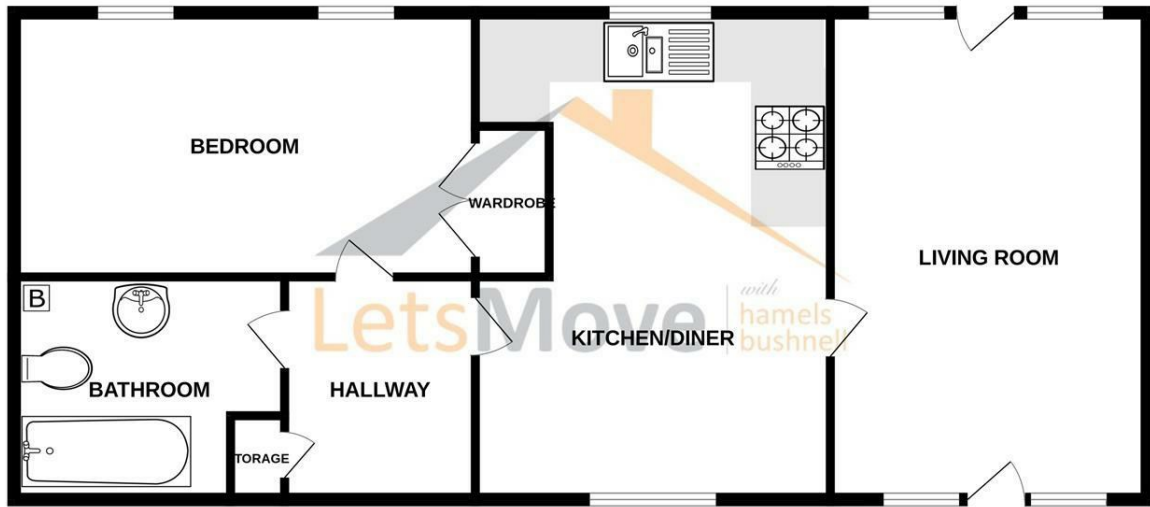
Agent Notes

It is worthy of note that the property is currently tenanted.

Ground rent and service charges apply.

Floor Plan

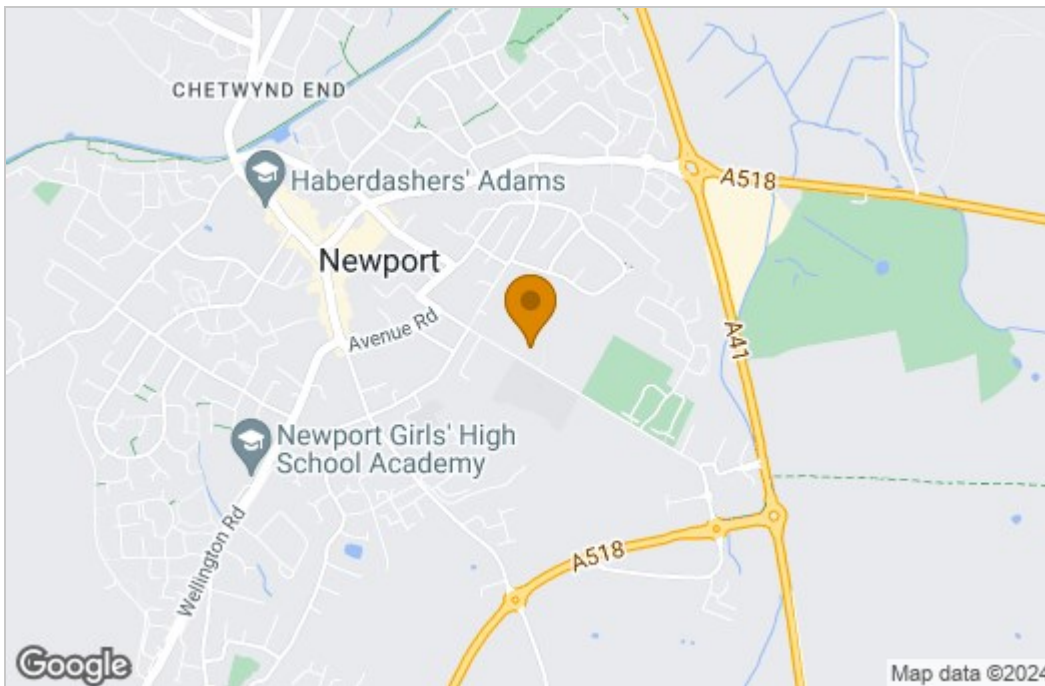
GROUND FLOOR



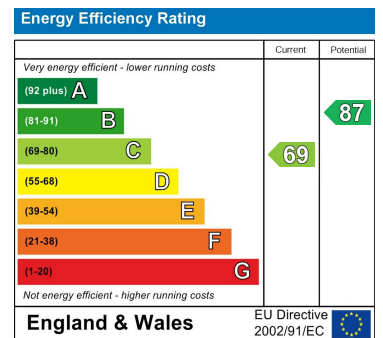
22 AUDLEY HOUSE MEWS

Measurements are approximate. Not to scale. Illustrative purposes only.
Made with Metropix ©2024

Area Map



Energy Efficiency Graph



These particulars, whilst believed to be accurate are set out as a general outline only for guidance and do not constitute any part of an offer or contract. Intending purchasers should not rely on them as statements of representation of fact, but must satisfy themselves by inspection or otherwise as to their accuracy. No person in this firm's employment has the authority to make or give any representation or warranty in respect of the property.

76-80 High Street, Newport, TF10 7BA

Tel: 01952 825987 Email: info@letsmovepropertymanagement.co.uk