



18 Stratford Grove, Penkridge, ST19 5SE
Offers In The Region Of £194,995

Situated on this popular development in Penkridge this property offers all the energy efficiency benefits of a modern house & with two well proportioned bedrooms, good living space, private garden and allocated parking it is sure to appeal to a variety of buyers.

Entrance Hall

WC



Bedroom One



double room with storage cupboard.

Lounge



with storage cupboard.

Bedroom Two



double room.

Kitchen Diner

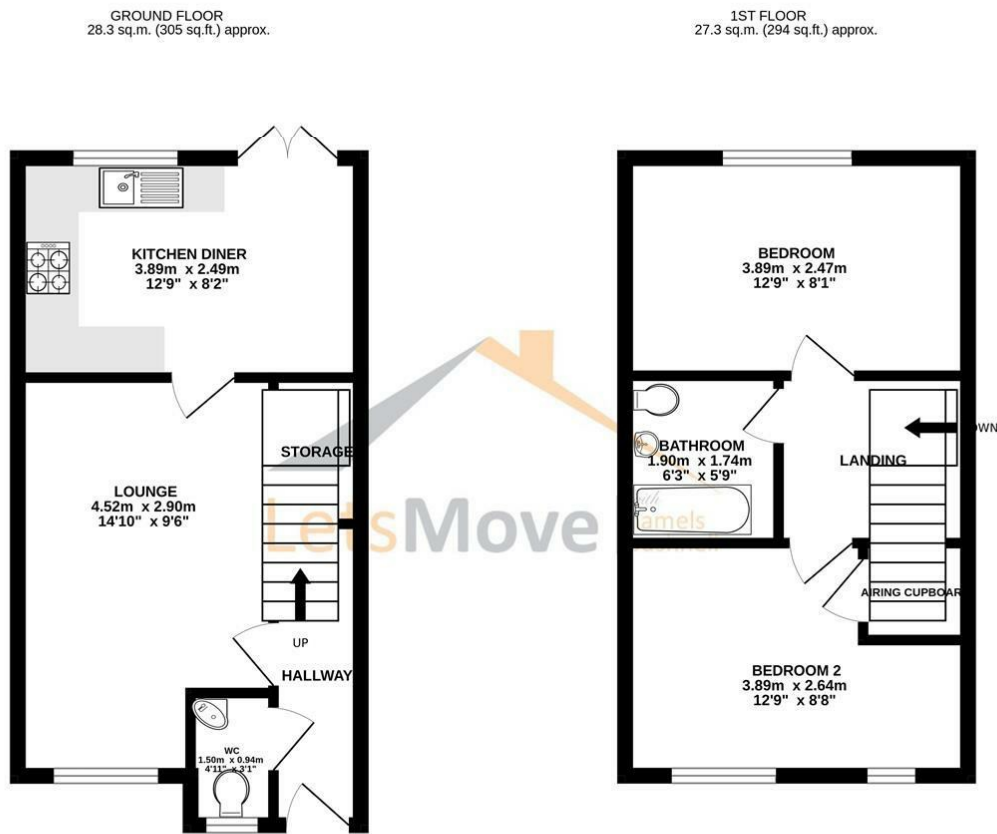


with French doors to garden.

Bathroom

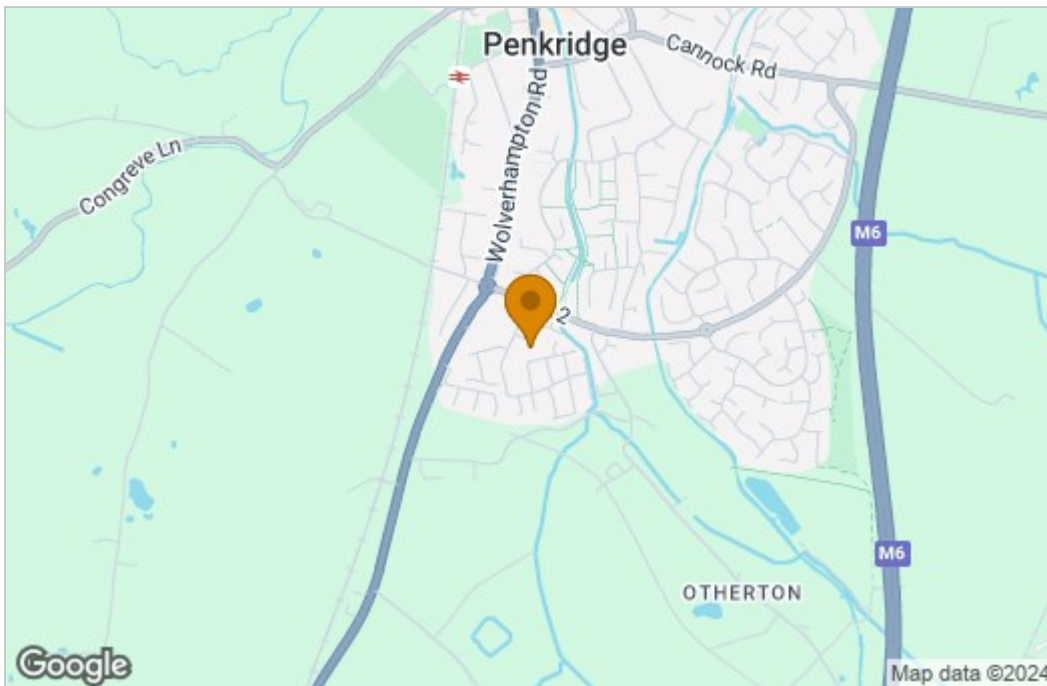


Floor Plan

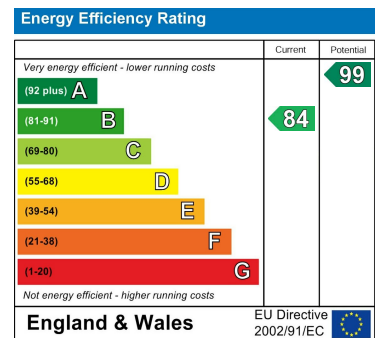


TOTAL FLOOR AREA: 55.6 sq.m. (599 sq.ft.) approx.
 Measurements are approximate. Not to scale. Illustrative purposes only.
 Made with Metropix ©2024

Area Map



Energy Efficiency Graph



These particulars, whilst believed to be accurate are set out as a general outline only for guidance and do not constitute any part of an offer or contract. Intending purchasers should not rely on them as statements of representation of fact, but must satisfy themselves by inspection or otherwise as to their accuracy. No person in this firm's employment has the authority to make or give any representation or warranty in respect of the property.