



13 Audley House Mews, Newport, TF10 7BP

Price £79,995

Audley House Mews is a hidden gem. This first floor open-plan studio apartment would make an ideal purchase for first time buyers or as an addition to your property portfolio.

Living/Sleeping Area

Open plan L-shaped accommodation, with three double-glazed windows allowing lots of natural light into the property. The space includes a radiator, ceiling light fittings and storage cupboard.

Kitchen

Fitted with a Synergie oven and Belling Fastlite hob, with facilities to add more appliances. Wood-effect wall and base units with stainless steel sink set in the countertops. Partially tiled room.

Shower Room

White painted room with high ceiling, central heating radiator and frosted double-glazed window. Electric shower cubicle with tiled walls. Matching white low-level flush WC and wash basin.

Outdoors

Off-road parking available and access to a shared maintained garden.

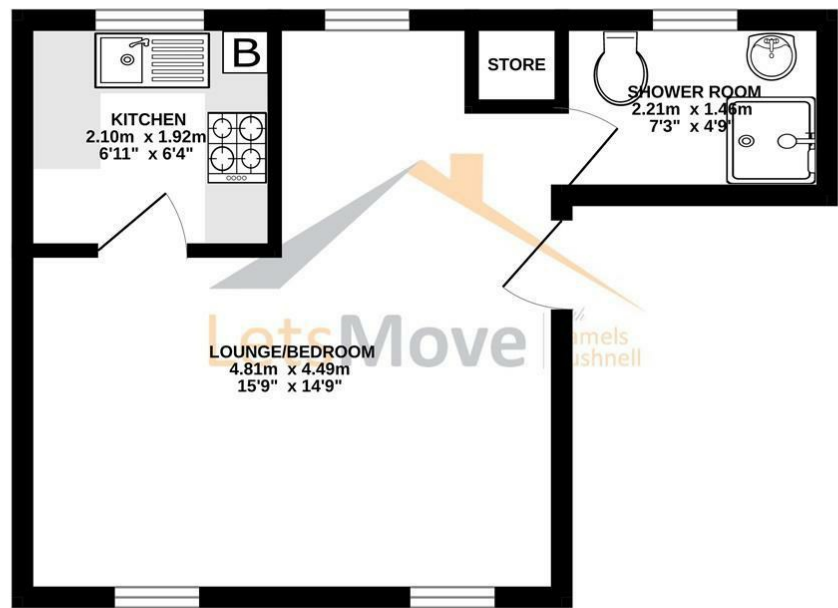
Agent Notes

It is worthy of note that the property is currently tenanted.

Ground rent and service charges apply.

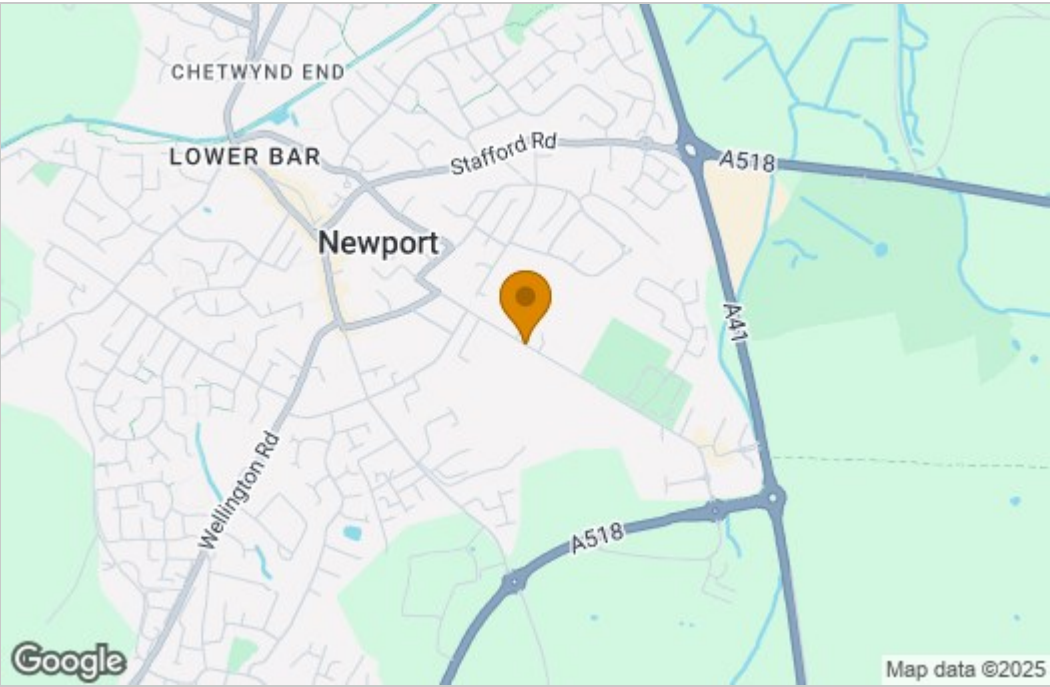
Floor Plan

GROUND FLOOR
24.8 sq.m. (267 sq.ft.) approx.

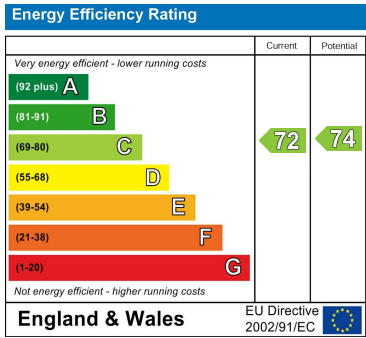


TOTAL FLOOR AREA: 24.8 sq.m. (267 sq.ft.) approx.
Measurements are approximate. Not to scale. Illustrative purposes only.
Made with Metropix ©2024

Area Map



Energy Efficiency Graph



These particulars, whilst believed to be accurate are set out as a general outline only for guidance and do not constitute any part of an offer or contract. Intending purchasers should not rely on them as statements of representation of fact, but must satisfy themselves by inspection or otherwise as to their accuracy. No person in this firms employment has the authority to make or give any representation or warranty in respect of the property.