

ATLAS HOUSE

MARLOW, SL71EY

NEWLY REFURBISHED
GRADE A OFFICE SPACE



ATLAS
HOUSE

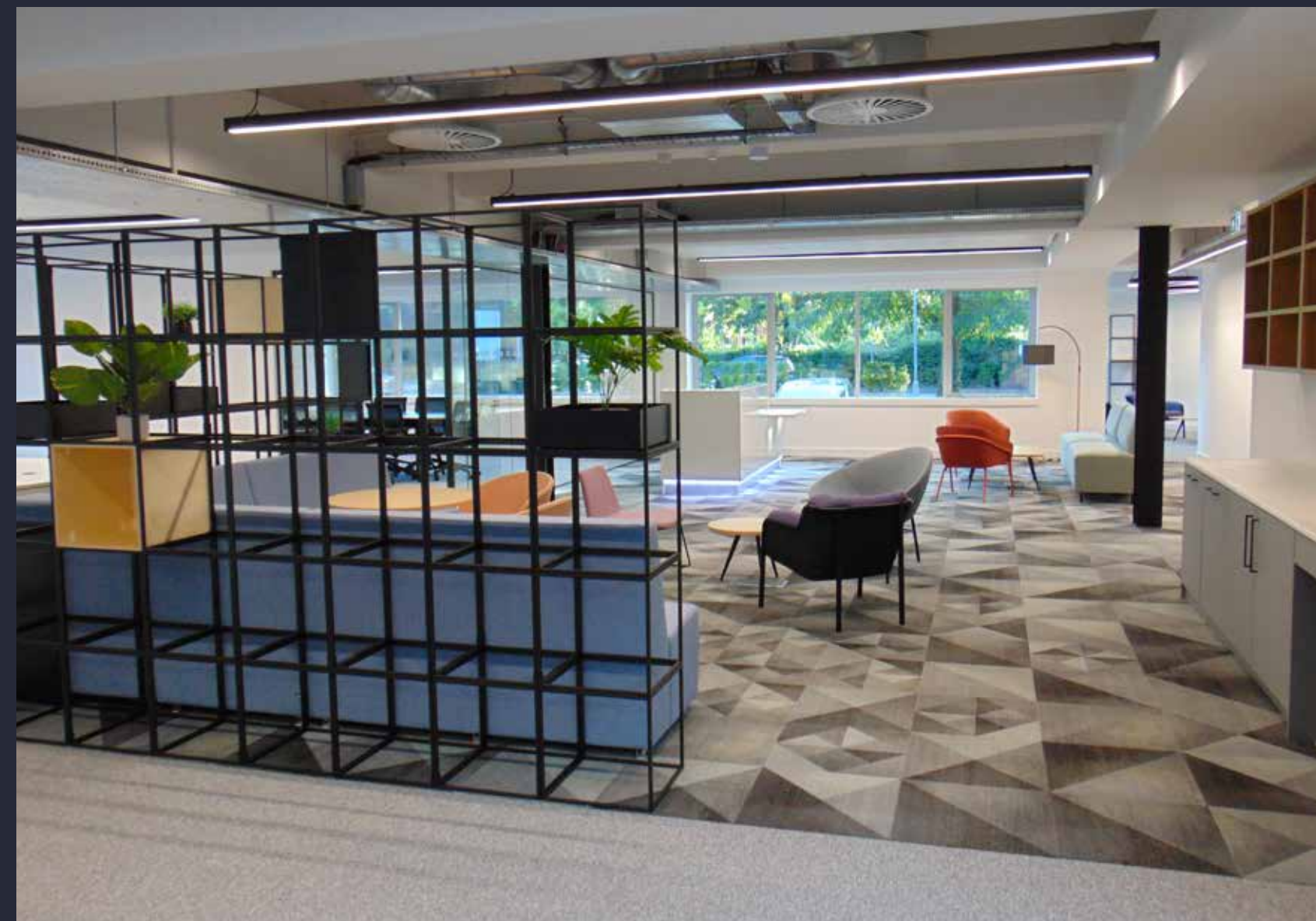


BK66 HLF

TO LET APPROX. 6,435 SQ FT (NIA)

Atlas House is located in the heart of Globe Business Park in Marlow, one of the Thames Valley's most accessible business locations. It is situated adjacent to the A404 providing direct access to both the M40 at Junction 4 and the M4 at Junction 8/9.

Atlas House provides high quality office space arranged over ground and first floors, with newly refurbished reception and shared collaborative business lounge.



FLOOR PLANS

GROUND FLOOR

FLOOR	SQ FT	SQ M
Part Ground	(approx) 6,435*	(609)

*Area taken from previous measured survey. Subject to final measurement, following completion of refurbishment works.

SPEC DETAIL

The fully refurbished CAT A+ ground floor office suite provides:

- New air conditioning
- New LED lighting
- New raft system ceiling finish
- Boardroom with high quality finishes
- Kitchen and break out area
- Modern reception space
- Fully accessed raised floors

Atlas House offers:

- Newly refurbished WC facilities
- New shower/changing and locker facilities
- Double height reception area
- One passenger lift
- New communal business lounge//break out area
- External communal courtyard area
- Secure car parking (1:264 sq ft)

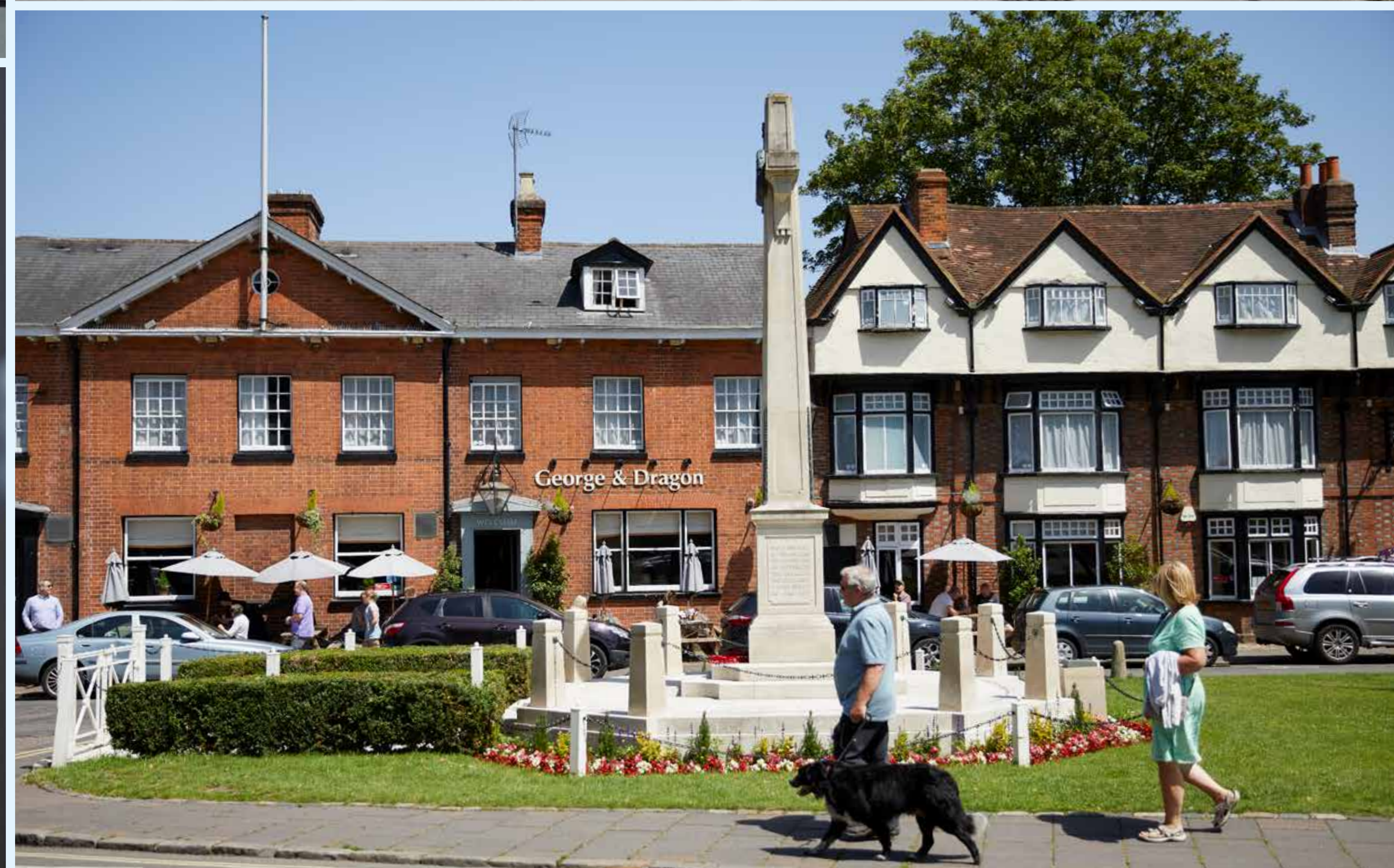


LIFESTYLE

Marlow is a progressive and accessible riverside town with an expansive variety of bars, restaurants, shops and leisure facilities within a ten minute walk of Atlas House.









AMENITIES

COFFEE SHOPS ●

1. Coopers
2. Globeside café
3. Starbucks
4. Fego Caffe
5. Costa Coffee

SHOPS ●

1. The White Company
2. Jigsaw
3. Sweaty Betty
4. M&S
5. Accessorize

RESTAURANTS ●

1. The Ivy Marlow Garden
2. The Marlow Bar and Grill
3. Marlow Donkey pub
4. The Hand and Flowers
5. The Coach
6. The Butcher's Tap
7. The Shed

HOTELS/LEISURE ●

1. The Crowne Plaza / Conference Centre
2. Premier Inn
3. Macdonald Compleat Angler
4. Travelodge
5. Marlow Club

NEARBY TRANSPORT



DRIVE TO AIRPORTS

- 28 MINS** London Heathrow Airport (21.8 miles)
- 52 MINS** London Luton Airport (42.2 miles)
- 1HR 10 MINS** London Gatwick Airport (58.1 miles)



DRIVE TO TOWNS

- 6 MINS** Marlow (0.8 miles)
- 8 MINS** Bourne End (2.2 miles)
- 14 MINS** Maidenhead (6.9 miles)



WALK TO RAIL

- 8 MINS** Marlow Rail Station (0.8 miles)
- 15 MINS** High Wycombe Station (5.0 miles) approx drive
- 14 MINS** Maidenhead Station (7.0 miles) approx drive



BUS

20 MINS Globe Park executive shuttle bus runs from High Wycombe and Maidenhead.

CONTACT US

Lambert
Smith
Hampton



DOMINIC FAIRES

07967 375 962

RODDY ABRAM

07899 001028

JENNIFER LAMB

07917 217182

TOM SLATER

07870 803314

ATLASHOUSEMARLOW.CO.UK

