



Dorney House Business Centre, 46-48A High Street, Slough SL1 7JP

TO LET

Semi-Serviced Offices

80 - 1,000 Sq Ft
(7 - 93 Sq M)

DESCRIPTION

Dorney House is an attractive 3 storey building. The ground floor includes some retail space (including a coffee shop) and office accommodation. All floors offer adaptable workspace to a good specification. Simple, flexible licence agreements are available, giving the ability to expand or contract with changing business needs.

- ✓ Over 30 rooms of varying sizes
- ✓ Workstations from £130 per desk per month all inclusive
- ✓ Furnished or non-furnished as required
- ✓ Free conference room, by arrangement
- ✓ Kitchen facilities on each floor
- ✓ WC's & disabled facilities on each floor

LOCATION

Dorney House is located in the central hub of Burnham's main shopping facilities, fronting in both High Street and Jennery Lane. Burnham is approximately 4 miles west of Slough and 4 miles east of Maidenhead with good access to M4 motorway (Jct: 6 & 7) and the M40 (Jct: 2). Burnham Railway Station is a 15 minute walk away with direct services to Reading and London Paddington.

ACCOMMODATION

Net Internal Areas	sq ft	sq m
Total	1,000	93

VAT

All prices, premiums and rents etc. are quoted exclusive of VAT at the prevailing rate.

LEGAL COSTS

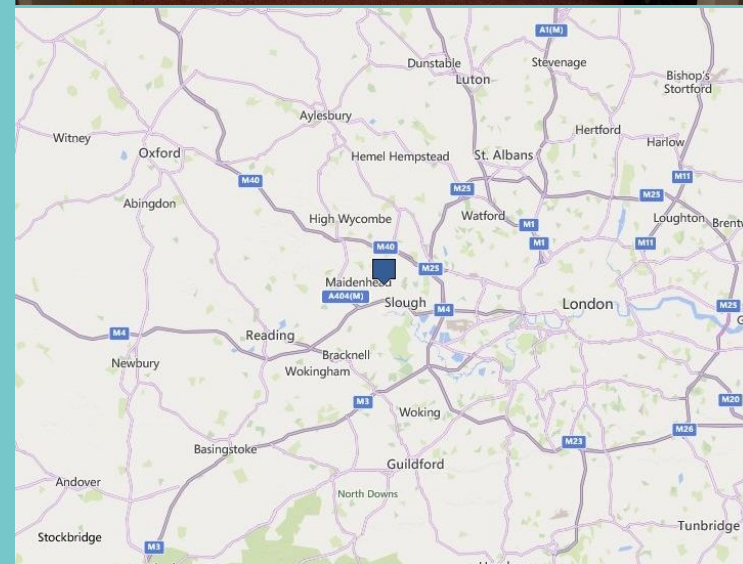
Each party to be responsible for their own legal costs incurred in any transaction.

BUSINESS RATES

Included in rent along with service charge.

TERMS

All-inclusive Licence Fee to include: Business Rates, water, electricity, heating, cleaning of common parts, disposal of waste, building insurance, repairs and maintenance.



lsh.co.uk

© Lambert Smith Hampton. Details of Lambert Smith Hampton (LSH) can be viewed on our website www.lsh.co.uk. This document is for general informative purposes only. The information in it is believed to be correct, but no express or implied representation or warranty is made by LSH as to its accuracy or completeness, and the opinions in it constitute our judgement as of this date but are subject to change. Reliance should not be placed upon the information, forecasts and opinions for any the purpose, and no responsibility or liability, whether in negligence or otherwise, is accepted by LSH or by any of its directors, officers, employees, agents or representatives for any loss arising from any use of this document or its contents or otherwise arising in connection with this document. All rights reserved. No part of this document may be transmitted or reproduced in any material form by any means, electronic, recording, mechanical, photocopying or otherwise, or stored in any information storage or retrieval system of any nature, without the prior written permission of the copyright holder, except in accordance with the provisions of the Copyright Designs and Patents Act 1988. Warning: the doing of an unauthorised act in relation to a copyright work may result in both a civil claim for damages and criminal prosecution. Regulated by RICS 17-Jan-2024

VIEWING & FURTHER INFORMATION

Viewing strictly by prior appointment:



Jennifer Lamb
07917 217 182
jhlamb@lsh.co.uk