

Sycamore Cottage, Lower Terrace Road, Tideswell, Buxton, SK17 8LX

# Sycamore Cottage, Lower Terrace Road

Tideswell, Buxton, SK17 8LX

A two bedroomed mid terraced cottage, beautifully positioned on Lower Terrace Road Tideswell, benefitting from easily maintained patio gardens and pleasant views across the village field.

Occupying an elevated position with attractive views, this two bedroomed cottage has accommodation arranged over two floors and requires full refurbishment throughout.

The front door opens to a sitting room with a front facing view and original fitted cabinets. The dining kitchen requires updating throughout and features a stainless steel sink and drainer, oven and four burner hob (not tested). There is space and plumbing for washing machine and dryer and a UPVC glazed door opens to a rear patio garden.

Stairs rise to the top floor landing with access to all rooms. Bedroom one is a double bedroom with feature fireplace and pleasant view. Bedroom two is a rear facing single bedroom with mezzanine area and pleasant rear view. The family bathroom features a suite consisting of a flush WC pedestal wash basin, and bath with shower over.

Outside, to the front and rear of the property are easily maintained patio gardens.

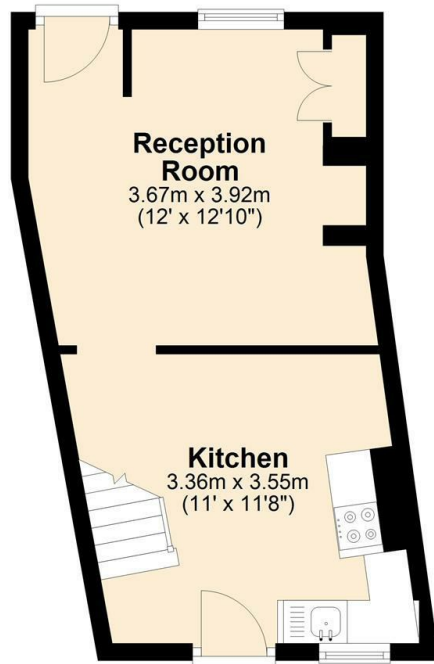
- Mid terraced two bedroom cottage in the village of Tideswell
- Sitting room with pleasant view
- Dining kitchen
- Bathroom
- Front and rear patio gardens
- UPVC double glazing
- Quiet village location
- Excellent village amenities
- Offered to the market with no onward chain
- Great renovation project





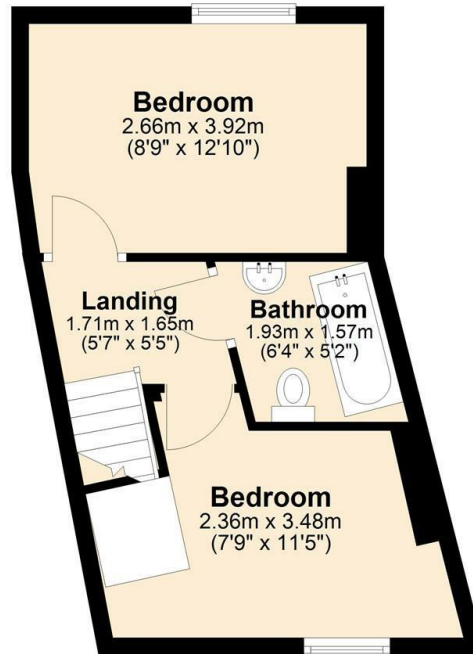
## Ground Floor

Approx. 26.7 sq. metres (287.4 sq. feet)



## First Floor

Approx. 27.9 sq. metres (300.4 sq. feet)



Total area: approx. 54.6 sq. metres (587.8 sq. feet)



### Bakewell

3 Royal Oak Place  
Matlock Street  
Bakewell DE45 1HD  
T: 01629 700699  
E: bakewell@elr.co.uk

### Banner Cross

888 Ecclesall Road  
Banner Cross  
Sheffield S11 8TP  
T: 01142 683388  
E: bannercross@elr.co.uk

### Dore

33 Townhead Road  
Sheffield  
S17 3GD  
T: 0114 2362420  
E: dore@elr.co.uk

### Hathersage

Main Road, Hathersage  
Hope Valley  
Derbyshire S32 1BB  
T: 01433 651888  
E: peakdistrict@elr.co.uk

### Rotherham

149 Bawtry Road  
Wickersley  
Rotherham S66 2BW  
T: 01709 917676  
E: wickersley@elr.co.uk

**EADON  
LOCKWOOD  
& RIDDLE**  
ESTD 1840

All rooms have been measured with electronic laser and are approximate measurements only. None of the services to the above property have been tested by ourselves, and we cannot guarantee that the installations described in the details are in perfect working order. Eadon Lockwood & Riddle for themselves, and for the vendors or lessors, produce these brochures in good faith, and are a guideline only. They do not constitute any part of a contract and are correct to the best of our knowledge at the time of going to press.