



5, Bobbin Mill

Cressbrook, SK17 8SA

Beautifully presented two double bedroomed apartment being part of an impressive conversion of a Sir Richard Arkwright former cotton mill. With two allocated parking spaces and lovely landscaped communal grounds the property enjoys the most stunning views over Monsal Dale and up to the Monsal Trail.

The spacious accommodation consists of a communal entrance hallway with security intercom, stair and lift access to the apartment.

The private entrance hallway has a security intercom, three generously proportioned storage cupboards and doors leading to the shower room, sitting room and both bedrooms.

The sitting room enjoys a south facing aspect with glorious views over the Dale. There is space for dining and the area opens out into the contemporary style kitchen which is extremely well appointed with integrated appliances including a dishwasher, induction hob, electric oven, upright fridge freezer and a stand alone washer dryer.



- SUPERB TWO DOUBLE BEDROOMED APARTMENT
- TWO PARKING SPACES - ONE IN UNDERCROFT
- IMPRESSIVE LANDSCAPED COMMUNAL GARDENS
- GRADE II LISTED SIR RICHARD ARKWRIGHT COTTON MILL CONVERSION
- SECURITY INTERCOM , LIFT AND STAIR ACCESS
- STUNNING VIEWS OVER MONSAL DALE
- STYLISH MODERN INTERIOR
- COMMUNAL FACILITIES INCLUDING A BOWLING GREEN AND GAMES ROOM
- VACANT POSSESSION



Bedroom One is a double with views over the communal courtyard and a useful storage cupboard.

Bedroom Two is a further double with double doors opening to a built in storage cupboard.

The shower room features a walk in double shower with a waterfall shower head and separate hand held attachment. Low flush wc and hand wash basin.

Externally, the apartment benefits from two parking spaces one of which is located beneath the Mill in a covered undercroft car park. There are lovely landscaped grounds surrounding the development along with a bowling green and well equipped games room for communal use.

VACANT POSSESSION

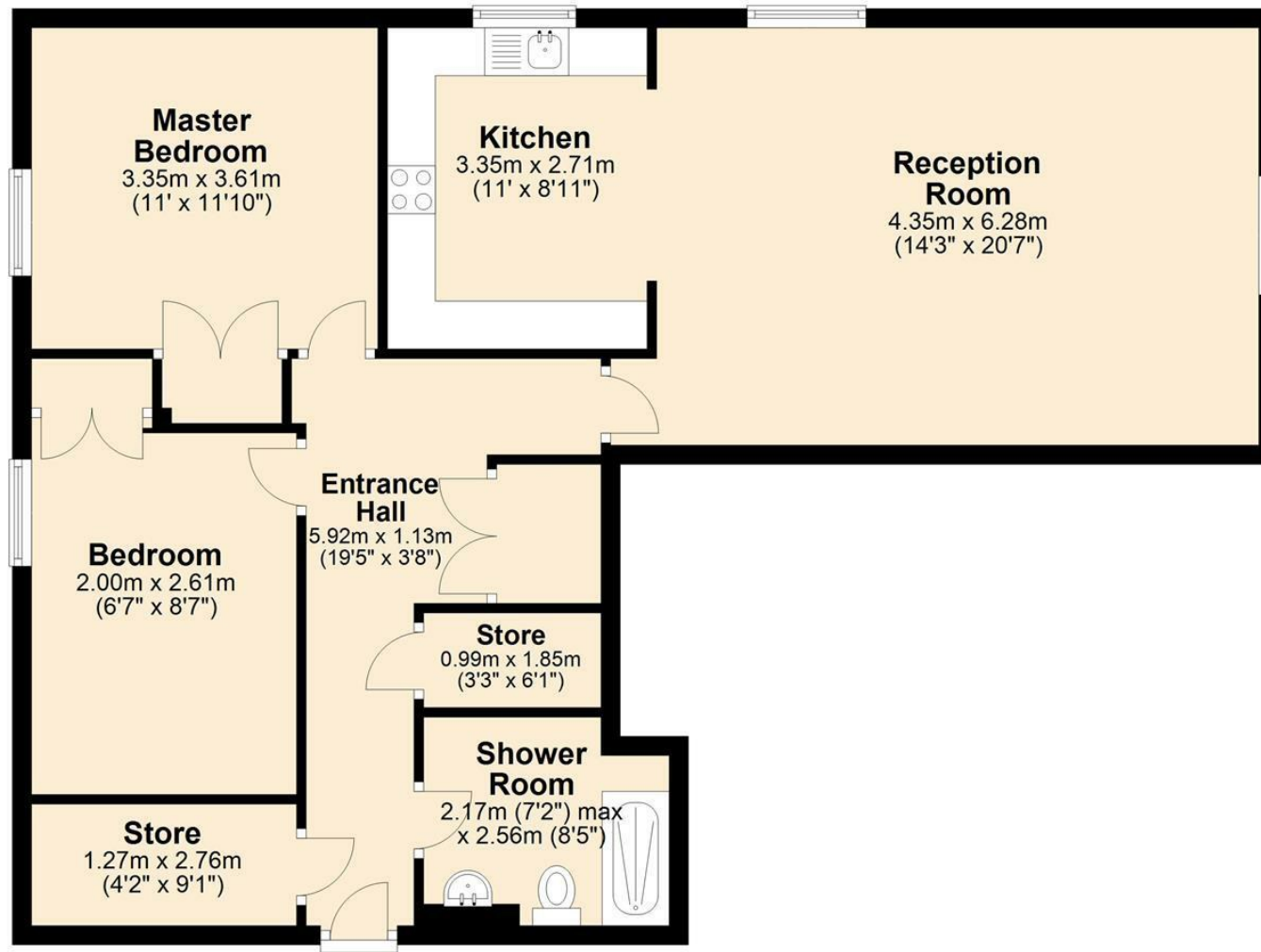






Second Floor

Approx. 86.2 sq. metres (927.8 sq. feet)



Total area: approx. 86.2 sq. metres (927.8 sq. feet)

Whilst every effort has been made to ensure the accuracy of the floorplan this plan is for reference only to location of rooms and property layout for detailed measurements please refer to the brochure or advice from the marketing Agent. UK Energy Assessors Ltd accept no responsibility for measurements and Gross areas of a property they have not visited. Plan produced using PlanUp.



Bakewell

3 Royal Oak Place
Matlock Street
Bakewell DE45 1HD
T: 01629 700699
E: bakewell@elr.co.uk

Banner Cross

888 Ecclesall Road
Banner Cross
Sheffield S11 8TP
T: 01142 683388
E: bannercross@elr.co.uk

Dore

33 Townhead Road
Sheffield
S17 3GD
T: 0114 2362420
E: dore@elr.co.uk

Hathersage

Main Road, Hathersage
Hope Valley
Derbyshire S32 1BB
T: 01433 651888
E: peakdistrict@elr.co.uk

Rotherham

149 Bawtry Road
Wickersley
Rotherham S66 2BW
T: 01709 917676
E: wickersley@elr.co.uk

**EADON
LOCKWOOD
& RIDDLE**
ESTD 1840