



1, Glebe Court, Great Longstone, DE45 1SU

1, Glebe Court

Great Longstone, DE45 1SU

Stone built two bedroomed end terrace property ideally located in the lovely village of Great Longstone surrounded by glorious Peak District countryside. The well appointed property has the benefit of private enclosed gardens and off road parking for two vehicles and is offered for sale with VACANT POSSESSION.

The well maintained accommodation briefly comprises at ground floor level of a dining kitchen featuring a comprehensive range of fitted wall and base units with fitted appliances. The sitting room has a feature fireplace and leads through to the rear conservatory opening out on to the dining terrace with a view of the garden.

At first floor are two bedrooms, one with built in storage and a shower room with quality fittings. Loft access from the landing.

The two private off road parking spaces are to the front of the property. Easily managed front garden laid mainly to lawn and enclosed rear garden with a timber storage shed and paved terrace.

VACANT POSSESSION

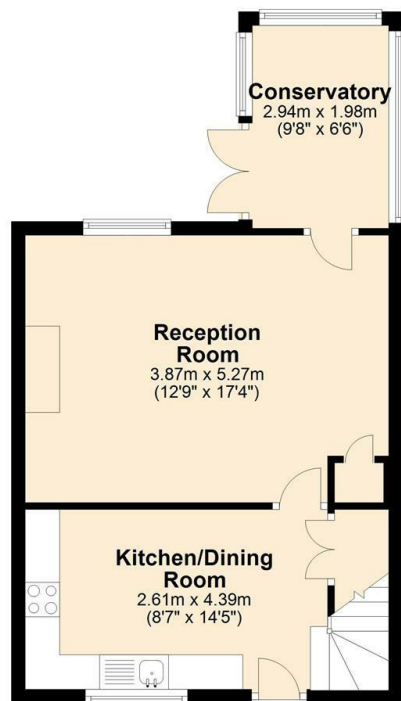
- STONE BUILT END TERRACE IN LOVELY VILLAGE
- TWO BEDROOMS
- OFF ROAD PARKING FOR TWO VEHICLES
- QUIET LOCATION
- EASILY MANAGED GARDENS
- WELL APPOINTED THROUGHOUT
- CONSERVATORY TO THE REAR
- VACANT POSSESSION
- EPC RATING C
- SURROUNDED BY GLORIOUS PEAK DISTRICT COUNTRYSIDE





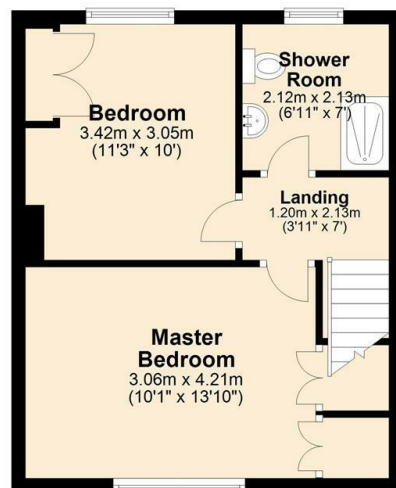
Ground Floor

Approx. 40.7 sq. metres (438.1 sq. feet)

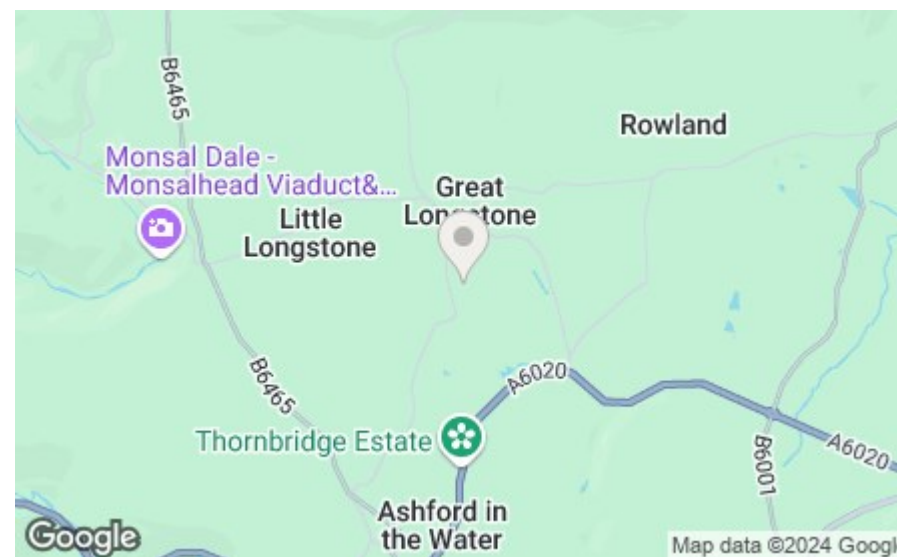


First Floor

Approx. 34.7 sq. metres (373.4 sq. feet)



Total area: approx. 75.4 sq. metres (811.5 sq. feet)



Bakewell
3 Royal Oak Place
Matlock Street
Bakewell DE45 1HD
T: 01629 700699
E: bakewell@elr.co.uk

Banner Cross
888 Ecclesall Road
Banner Cross
Sheffield S11 8TP
T: 01142 683388
E: bannercross@elr.co.uk

Dore
33 Townhead Road
Sheffield
S17 3GD
T: 0114 2362420
E: dore@elr.co.uk

Hathersage
Main Road, Hathersage
Hope Valley
Derbyshire S32 1BB
T: 01433 651888
E: peakdistrict@elr.co.uk

Rotherham
149 Bawtry Road
Wickersley
Rotherham S66 2BW
T: 01709 917676
E: wickersley@elr.co.uk

**EADON
LOCKWOOD
& RIDDLE**
ESTD 1840