

For Lease

Land

84m
0.353 Acres
34m

BROMWICH
HARDY
024 7630 8900
www.bromwichhardy.com

Land On The South Side

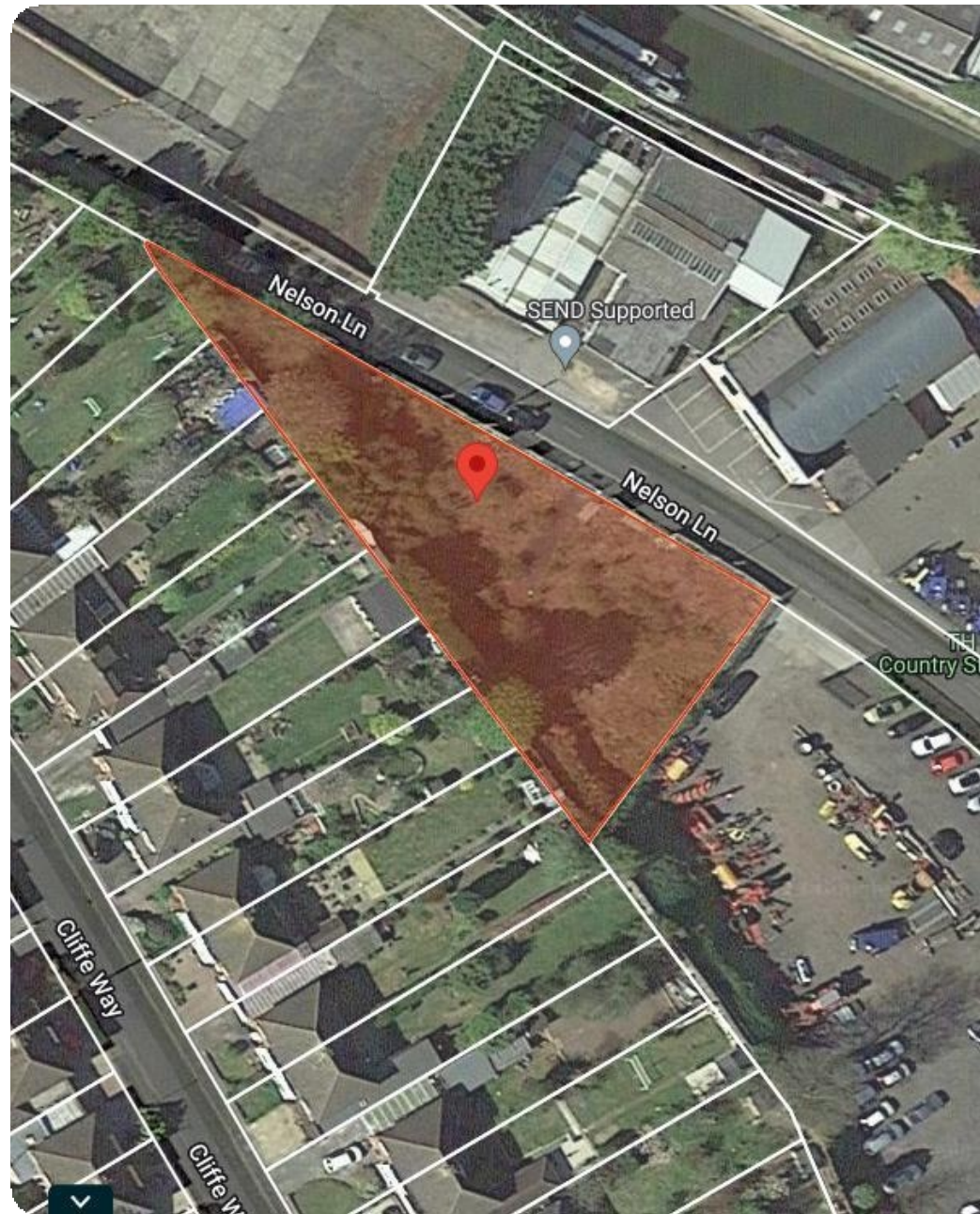
Nelson Lane, Warwick CV34 5JG

BROMWICH
HARDY
024 7630 8900
www.bromwichhardy.com

- 0.35 Acres
- £23,000 Per Annum

Key Features

- Open storage
- Gated site
- Ideal for logistics
- 24 Hour Access
- Close to Warwick bypass
- Triangular shaped block



Land On The South Side, Nelson Lane, Warwick,
CV34 5JG



Location

The property is situated on Nelson Lane directly opposite SEND supported. Local occupiers of Nelson Lane include Booker Warwick, Nissan, Hyundai, Silverline and Impact Repair Centre. The property is 2.6 miles from the A46, 1.5 miles from Warwick Town Centre and 5.6 miles from the M40.

Description

Open storage land for lease on Nelson Lane Warwick. The site is secure with fencing and gated. Ideal for storage of vehicles, building material and logistics. The site is available from January 2024.

Tenure

Available by way of a new lease direct with the Landlord on terms to be agreed.

EPC

Not required.

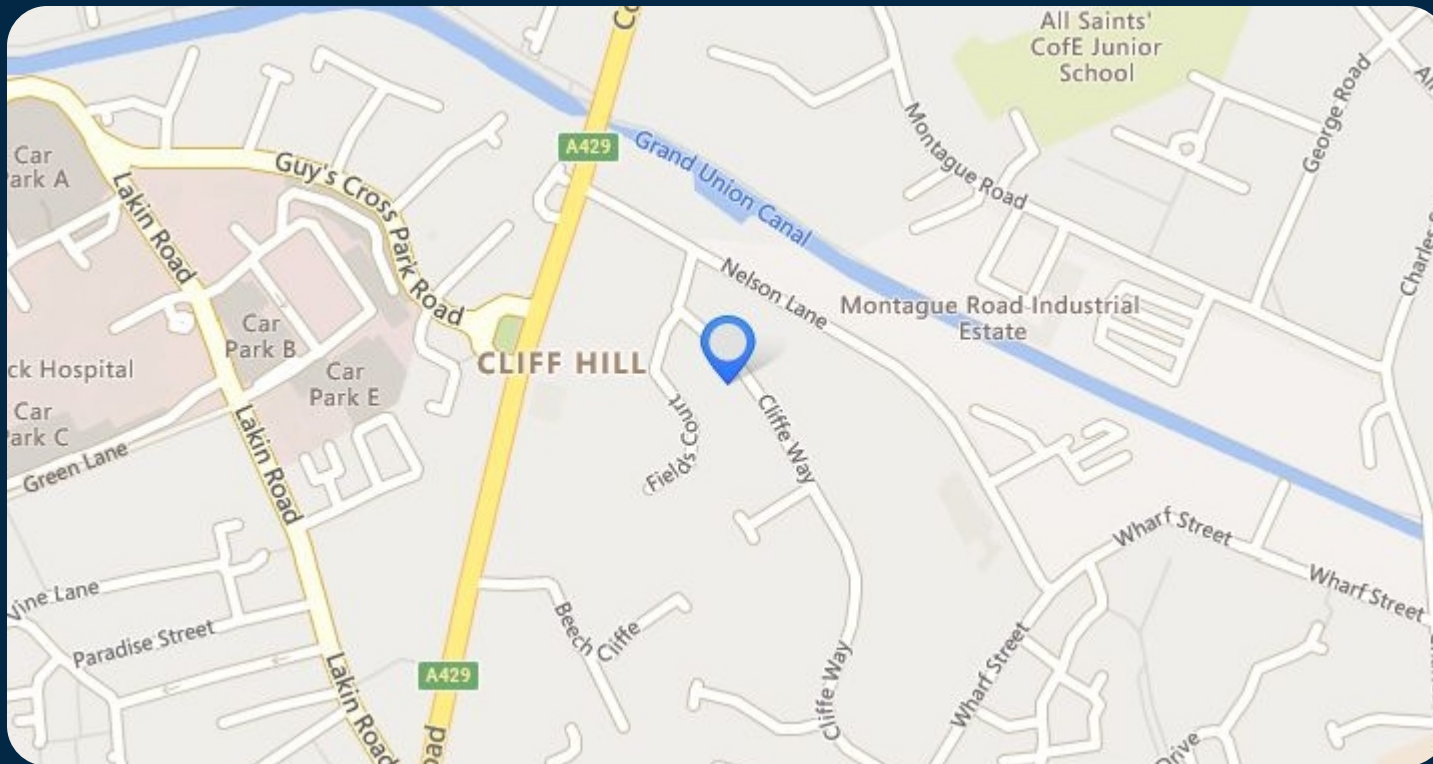
VAT

The property is not registered for VAT (Value Added Tax).



**Land On The South Side, Nelson Lane, Warwick,
CV34 5JG**

With over 250 years of combined experience, trust Bromwich Hardy to safeguard your commercial property.



Service Charge

Further information available upon request.

Legal Costs

Each party is to bear their own legal and surveyors costs incurred in this transaction.

Viewing

Strictly by appointment with the agent Bromwich Hardy.



Caine Gilchrist

Contact us with any queries about the property or to book a viewing

02476 308 900
07806 767 073
caine.gilchrist@bromwichhardy.com



Charlie Glover

Contact us with any queries about the property or to book a viewing

024 7630 8900
charlie.glover@bromwichhardy.com



Land On The South Side, Nelson Lane, Warwick, CV34 5JG

02476 308900 office@bromwichhardy.com www.bromwichhardy.com