



DESCRIPTION

First floor open plan office suite with on site and basement parking located in Coventry city centre. There is a shared lobby access with security doors and elevator access to all floors. Short term lease available up to a maximum of 12 months.

LEASE

£34,810 Per Annum

Business Rates and Service Charge

Rateable Value (2017)	£32,500
Uniform Business Rates (2016/17) (exclusive of water & sewerage)	0.479 pence
Rates Payable	£15,145

Accommodation

Total	3,481 Sq Ft	323.38 Sq M
-------	-------------	-------------

For more information, please contact:

Richard Sidaway

024 7630 8900

richard.sidaway@bromwichhardy.com

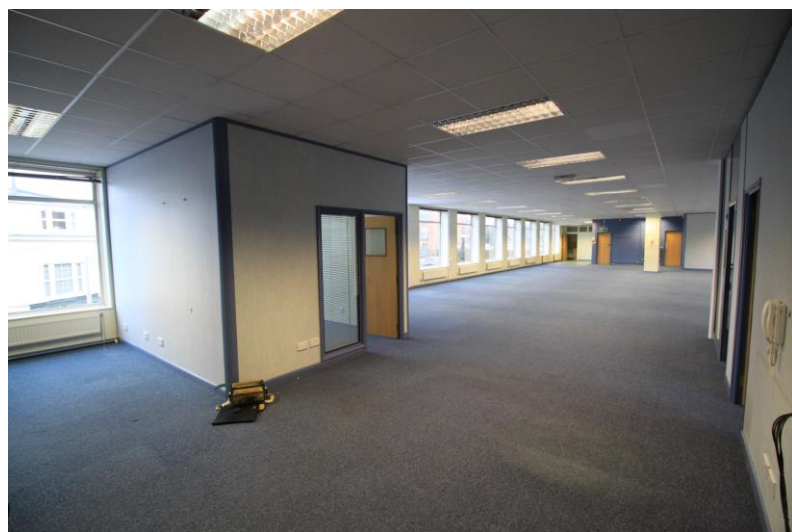
1 The Cobalt Centre
Siskin Parkway East
Middlemarch Business Park
Coventry
CV3 4PE

www.bromwichhardy.com

TO LET

City Centre Offices

First Floor Bank House, 23 Warwick Road,
Coventry, West Midlands CV1 2EZ



Misrepresentation Act 1967. Unfair Contract Terms 1977. The property Misdescription Act 1991. These particulars are issued without any responsibility on the part of the agent and are not to be construed as containing any representation or fact

For more information, please contact:

Richard Sidaway

024 7630 8900

richard.sidaway@bromwichhardy.com

1 The Cobalt Centre

Siskin Parkway East

Middlemarch Business Park

Coventry

CV3 4PE

www.bromwichhardy.com