

For Lease

Office



2nd Floor Anchor House

24 Anchor Road, Walsall WS9 8PW

BROMWICH
ARDY

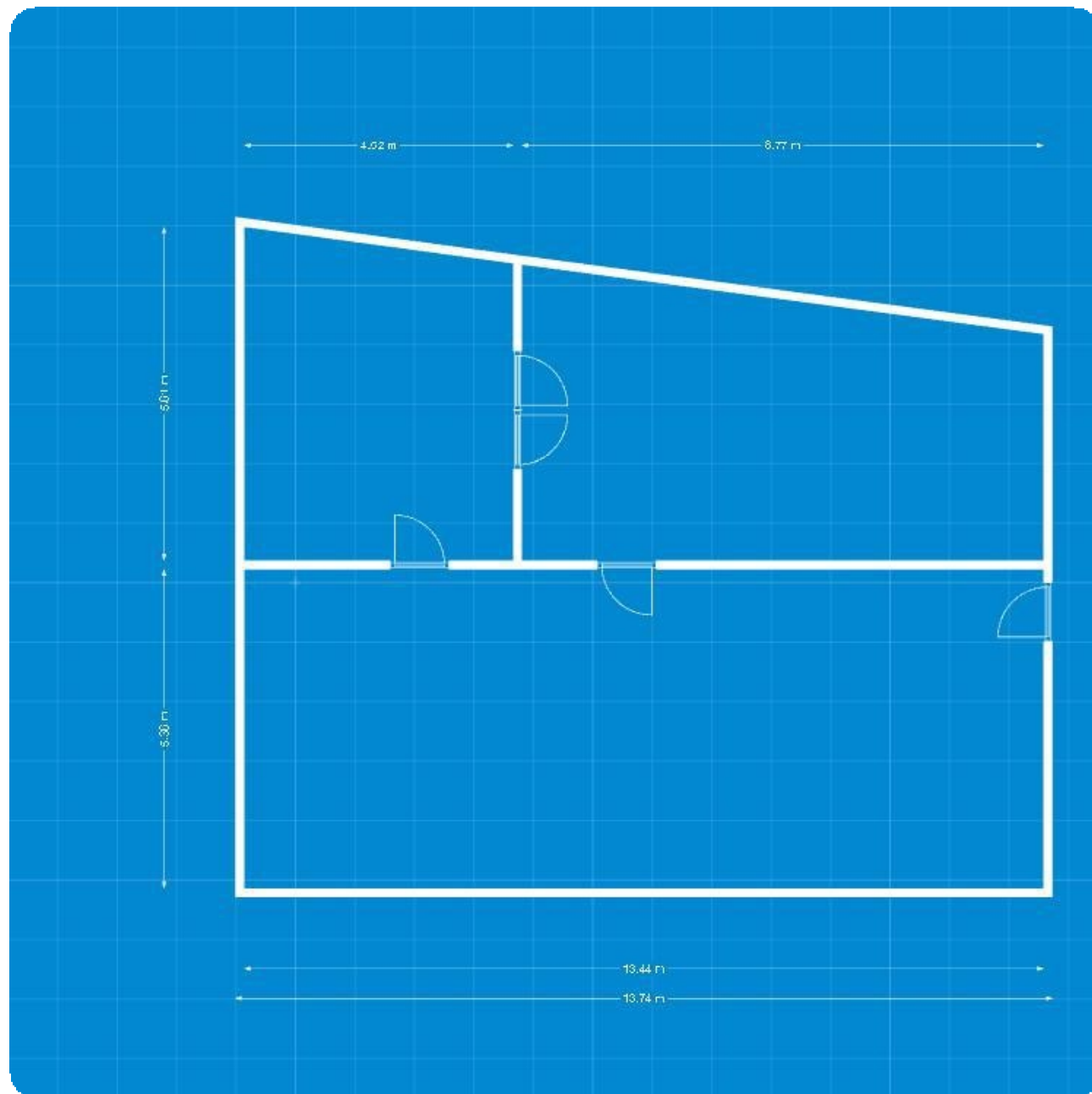
024 7630 8900

www.bromwichhardy.com

🏠 775 - 1,550 Sq Ft
💷 £8,000 - £14,000 Per Annum

Key Features

- Private Kitchenette
- LED Lights
- Newley Refurbished
- Onsite parking
- Close to the town centre



2nd Floor Anchor House, 24 Anchor Road, Walsall,
WS9 8PW



Location

Aldridge is an industrial town in the Walsall borough, West Midlands, England. It is historically a village that was part of Staffordshire until 1974. The town is 3 miles (4.8 km) from Brownhills, 5 miles (8 km) from Walsall, 6 miles (9.7 km) from Sutton Coldfield and 7 miles (11 km) from Lichfield.

Description

Located on the second floor of Anchor House, this office suite offers 3 main rooms, a kitchenette and shared W/C. The property is currently being refurbished with works expected to be completed in February 2024. The property benefits from LED lighting, gas radiator heating and new fixtures and fittings through out. Parking is undesignated however the property benefits from a large car park to the rear for the tenant.

Accommodation

Area	Sq Ft	Sq M
Suite 4 Second Floor	775	72
Suite 5 Secon Floor	775	72
Total	1,550	144



Tenure

The property is available on a lease to be agreed.

EPC

Available upon request.

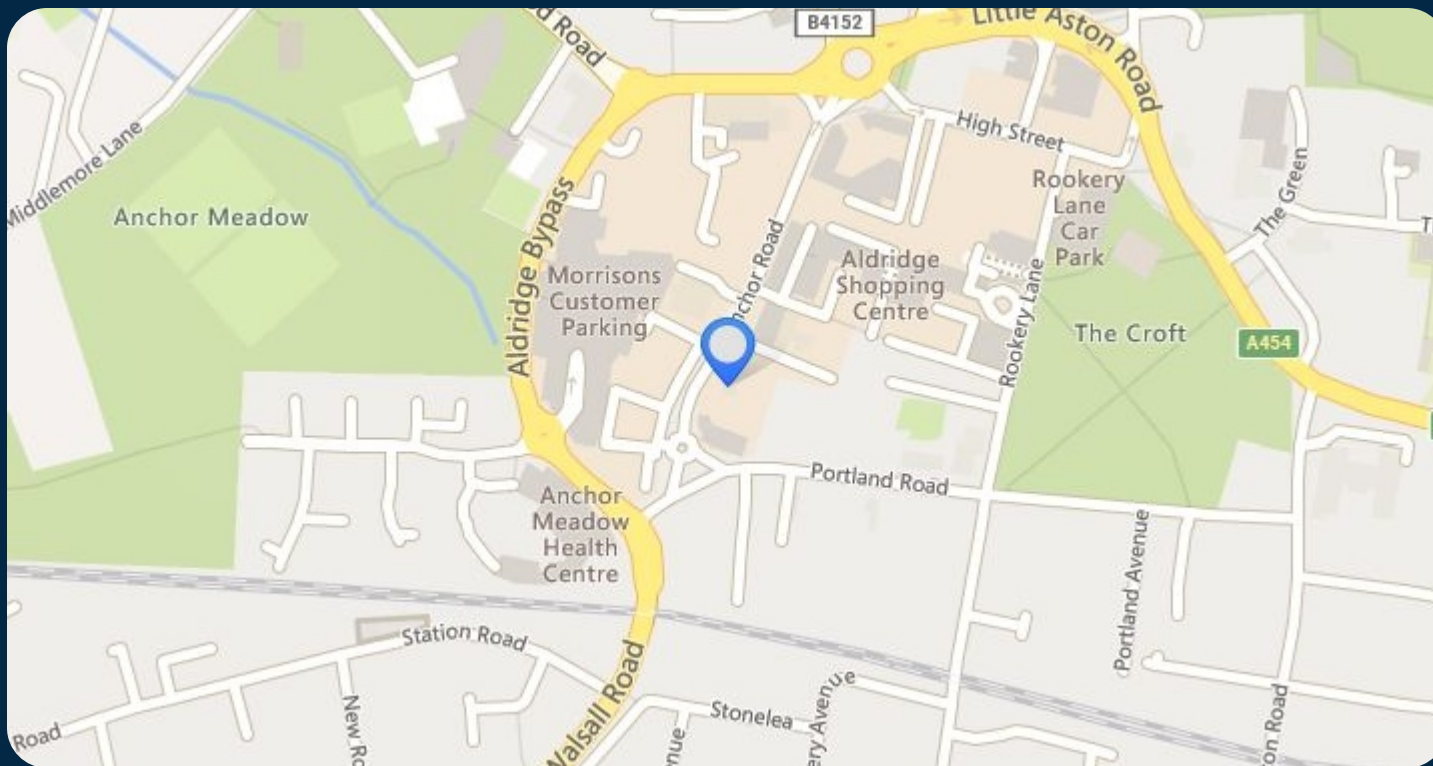


**2nd Floor Anchor House, 24 Anchor Road, Walsall,
WS9 8PW**

With over 250 years of combined experience, trust Bromwich Hardy to safeguard your commercial property.



2nd Floor Anchor House, 24 Anchor Road, Walsall, WS9 8PW



Service Charge

The service charge for this property is £5.35 per sqft and includes communal cleaning, communal utilities, landscaping and car parking.

Legal Costs

Each party is to bear their own legal and surveyors costs incurred in this transaction.

Viewing

Strictly by appointment with the agent Bromwich Hardy.



Caine Gilchrist

Contact us with any queries about the property or to book a viewing

02476 308 900

07806 767 073

caine.gilchrist@bromwichhardy.com



02476 308900

office@bromwichhardy.com

www.bromwichhardy.com