

The *Former* Compstall Printworks Houses



Protection for new-build home buyers



Viaduct Partnerships Ltd is a wholly owned of Stockport Homes and part of SHG.

Registered in England and Wales No: 10330045

Registered Office: Stockport Homes Group, Cornerstone, 2 Edward Street, Stockport SK1 3NQ

Welcome to Compstall



The former Compstall Printworks is a new and exciting development which will bring 32 affordable homes to the market.

The project will transform the previous Compstall Printworks, which has been vacant for more than a decade; preserving structures such as the renowned stone archway and bleach house - the only surviving 19th century building. Nestled in the heart of Compstall, only a stones throw from Etherow Park and these homes provide the perfect blend of modern comfort with historic charm.

*25%-75% Shared available, based on individual circumstances.
Rent and service charges apply, please refer to key information.

Plenty to do, Plenty to see

Discover the beauty of Etherow Country Park, local eateries and community spirit as the start of your journey in Compstall begins. Within close proximity to Marple Bridge, Marple and Romiley, this development is the perfect place for growing families, first time buyers or those looking to downsize to call home, hosting an abundance of schools, transport links and leisure activities.



Schools

Ludworth Primary School

Brabyns Preparatory School and Nursery

Marple Hall School

Harrytown Catholic High School

Transport

Romiley Train Station
5 min drive

Compstall Bus Stop:
1 min walk

Marple Train Station:
25 min walk



Leisure

✕ Fold Bistro

✕ Midland Hotel

👣 Brabyns Park

⌵ Andrew Arms

⌵ Northumberland Arms

👣 The Ridge Climbing Centre

👣 Etherow Country Park

👣 Werneth Low Country Park

The Printworks Site Plan



Plots 1-22. Underground parking available (1 Space per home)

Plots 23-29. 2 Spaces per home, see site plan for location.

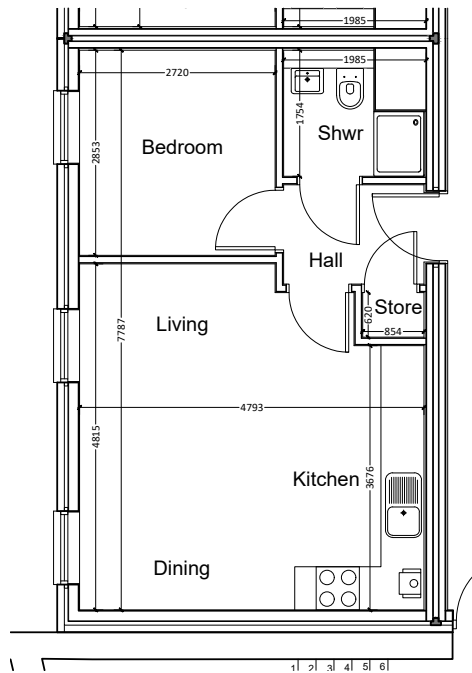
Coach House

1 Bedroom Apartment

1 Bedroom Apartment

Approximately 37 m² / 398 ft²

(Gross Internal Area)



Plot 1 - Character Area A
(Ground Floor)

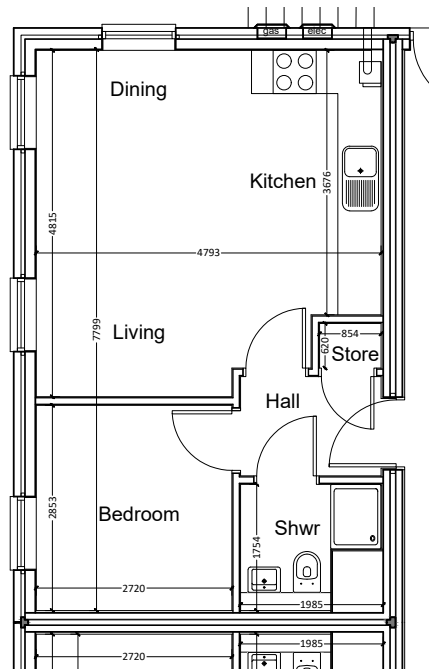
Plot 1, Ground Floor

Coach House

1 Bedroom Apartment

1 Bedroom Apartment

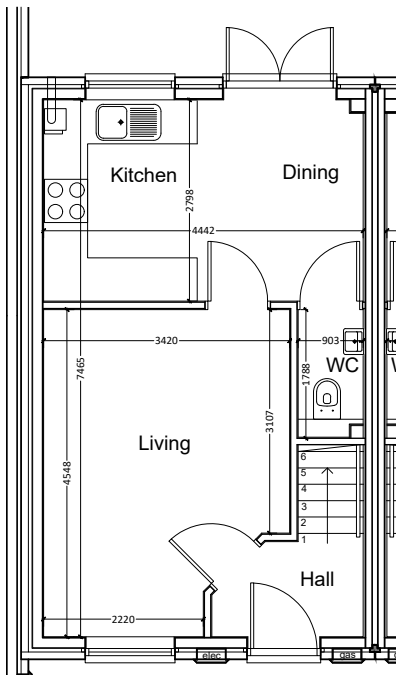
Approximately 37 m² / 398 ft²
(Gross Internal Area)



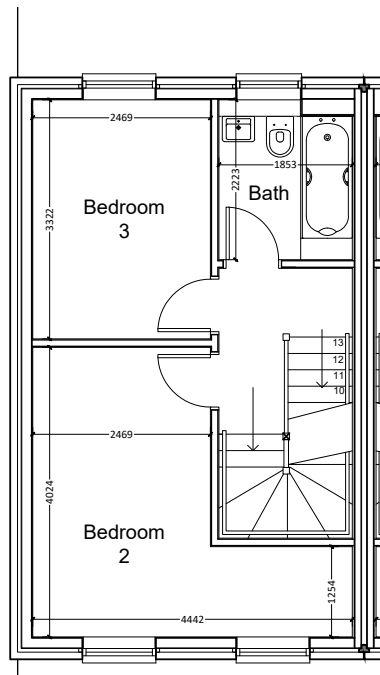
Plot 2 - Character Area A
(Ground Floor)

Plot 2, Ground Floor

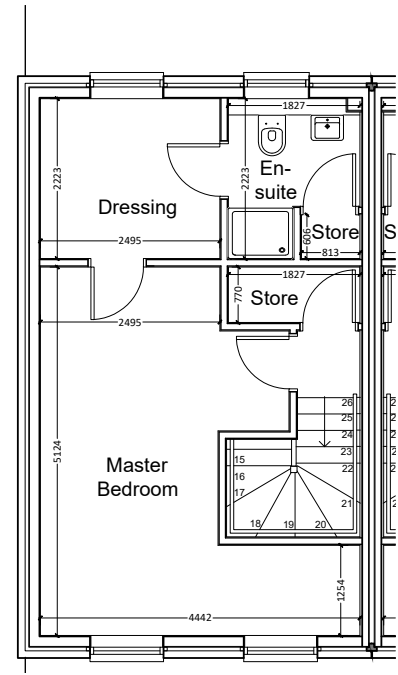
3 Bedroom, 3 Storey Dwelling
Approximately 99 m² / 1,065 ft²
(Gross Internal Area)



Plot 3 - Ground Floor Plan



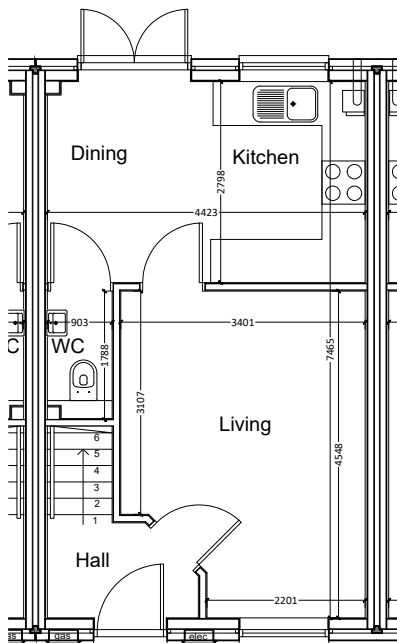
Plot 3 - First Floor Plan



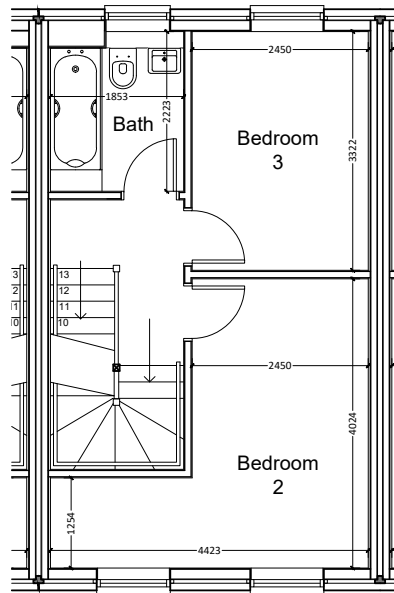
Plot 3 - Second Floor Plan

Plot 3

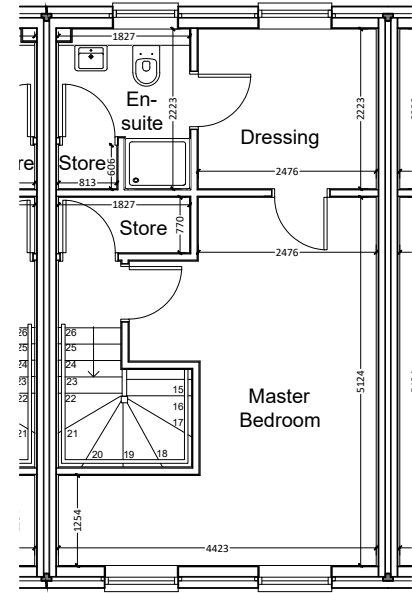
3 Bedroom, 3 Storey Dwelling
Approximately 99 m² / 1,065 ft²
 (Gross Internal Area)



Plot 4 - Ground Floor Plan



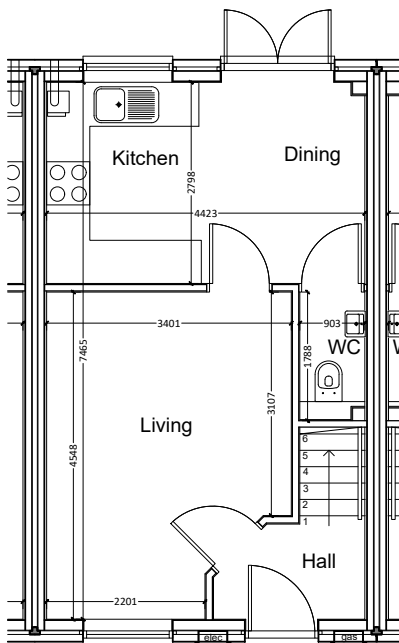
Plot 4 - First Floor Plan



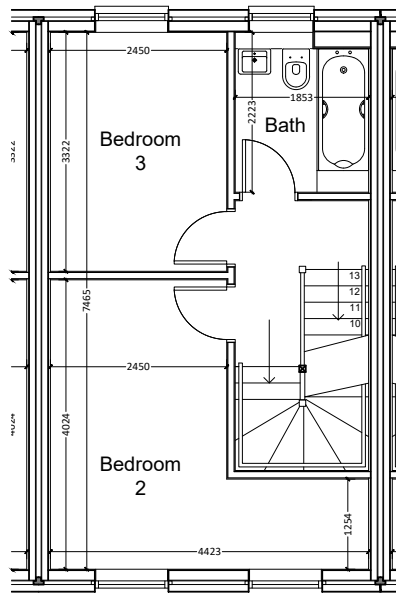
Plot 4 - Second Floor Plan

Plot 4

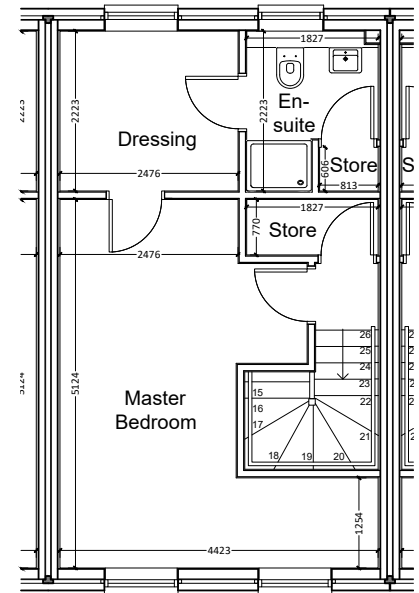
3 Bedroom, 3 Storey Dwelling
Approximately 99 m² / 1,065 ft²
 (Gross Internal Area)



Plot 5 - Ground Floor Plan



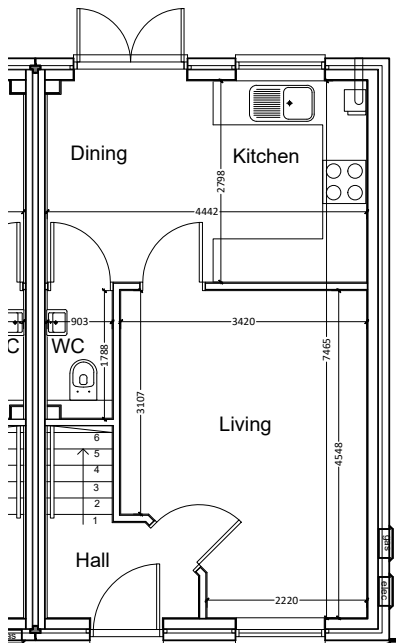
Plot 5 - First Floor Plan



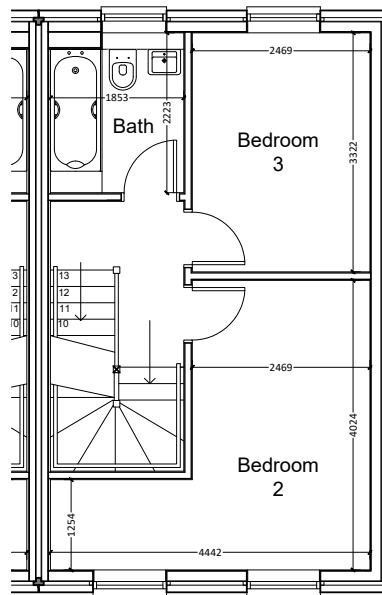
Plot 5 - Second Floor Plan

Plot 5

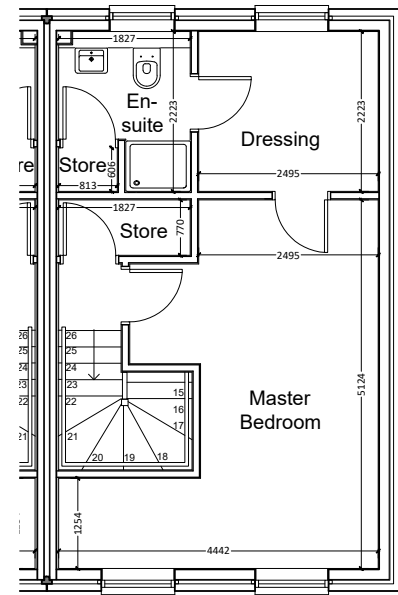
3 Bedroom, 3 Storey Dwelling
Approximately 99 m² / 1,065 ft²
 (Gross Internal Area)



Plot 6 - Ground Floor Plan



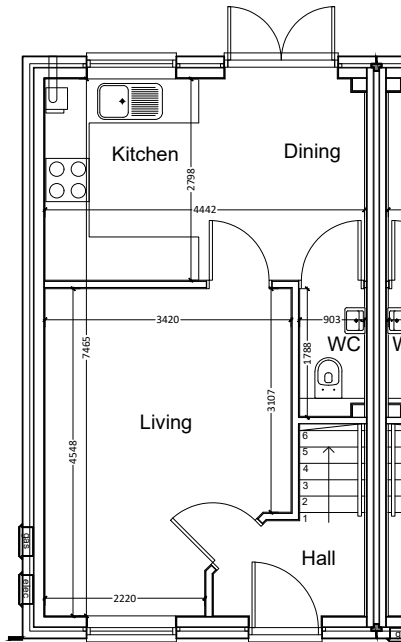
Plot 6 - First Floor Plan



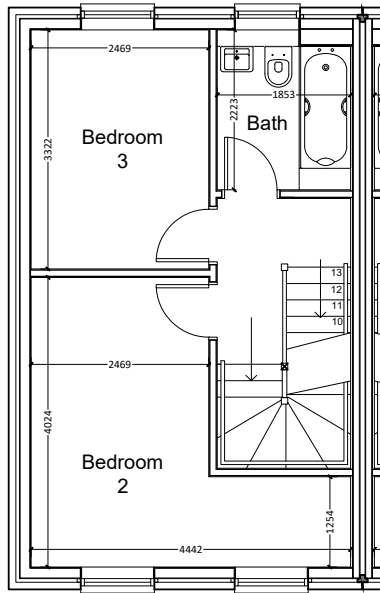
Plot 6 - Second Floor Plan

Plot 6

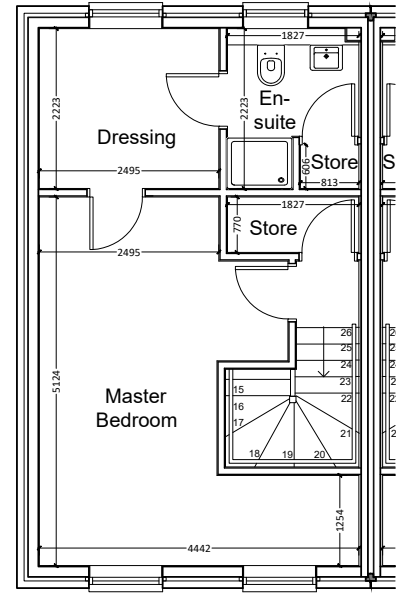
3 Bedroom, 3 Storey Dwelling
Approximately 99 m² / 1,065 ft²
 (Gross Internal Area)



Plot 7 - Ground Floor Plan



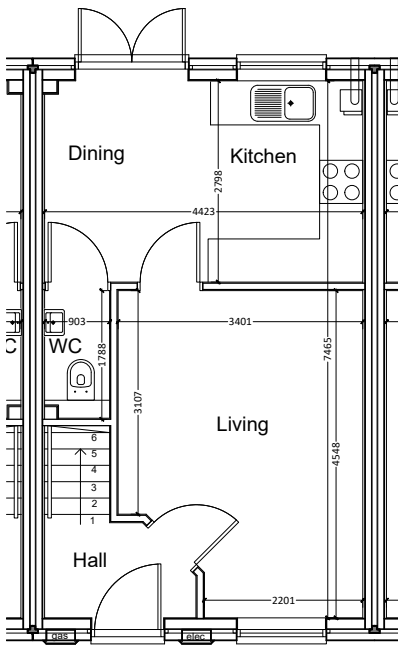
Plot 7 - First Floor Plan



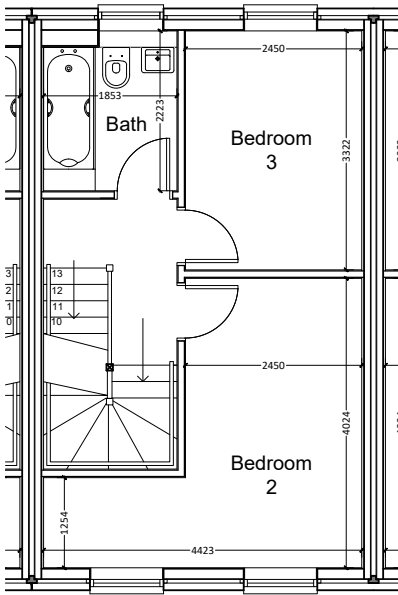
Plot 7 - Second Floor Plan

Plot 7

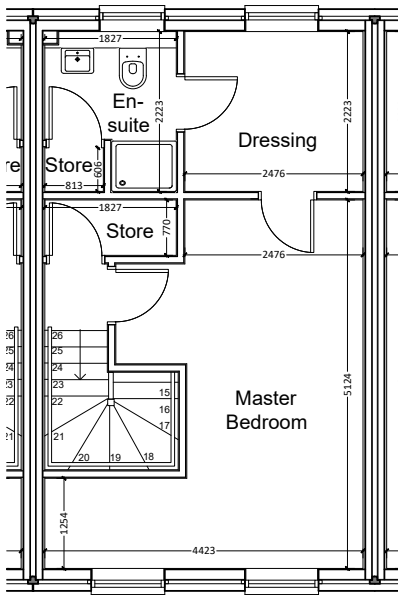
3 Bedroom, 3 Storey Dwelling
Approximately 99 m² / 1,065 ft²
(Gross Internal Area)



Plot 8 - Ground Floor Plan



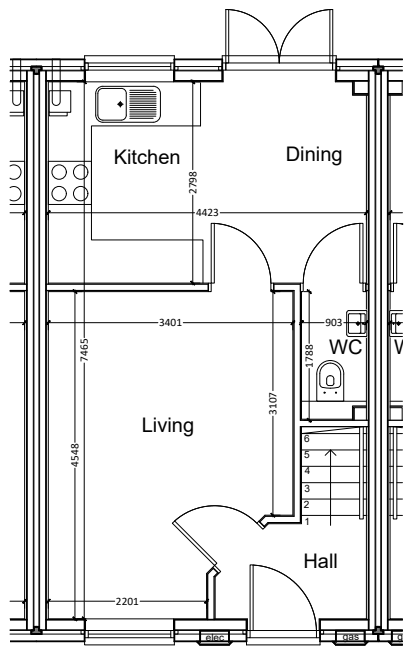
Plot 8 - First Floor Plan



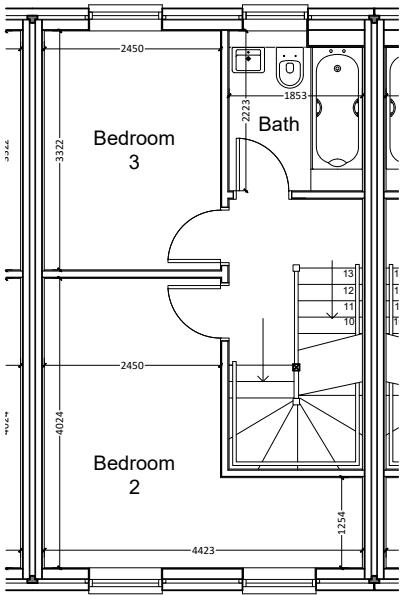
Plot 8 - Second Floor Plan

Plot 8

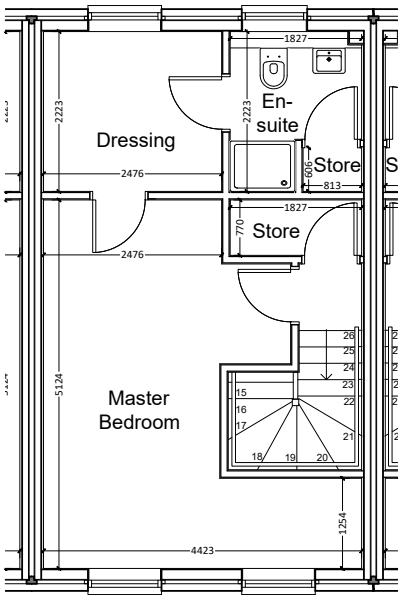
3 Bedroom, 3 Storey Dwelling
Approximately 99 m² / 1,065 ft²
(Gross Internal Area)



Plot 9 - Ground Floor Plan



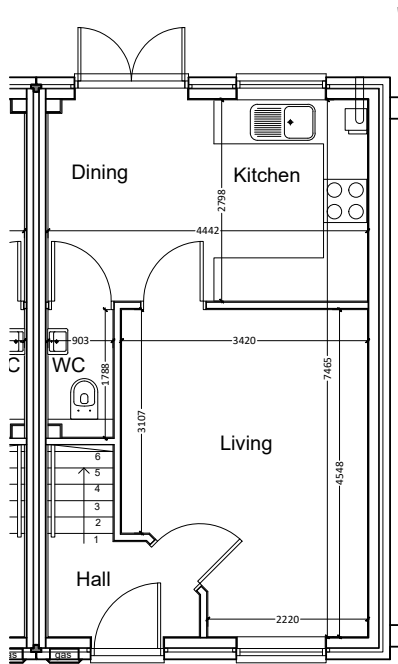
Plot 9 - First Floor Plan



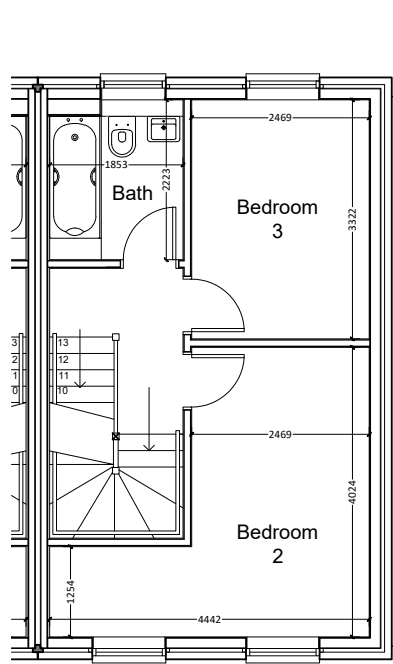
Plot 9 - Second Floor Plan

Plot 9

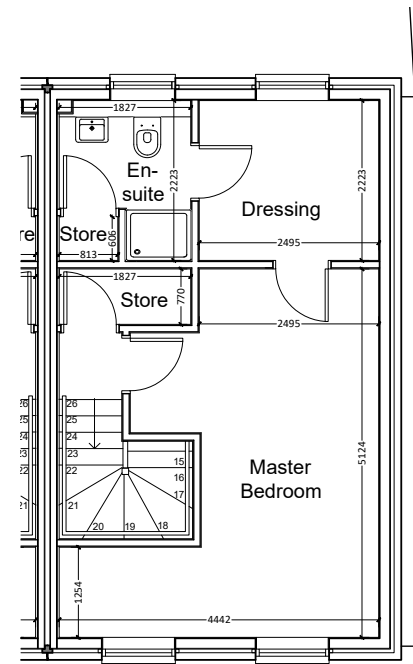
3 Bedroom, 3 Storey Dwelling
Approximately 99 m² / 1,065 ft²
 (Gross Internal Area)



Plot 10 - Ground Floor Plan



Plot 10 - First Floor Plan



Plot 10 - Second Floor Plan

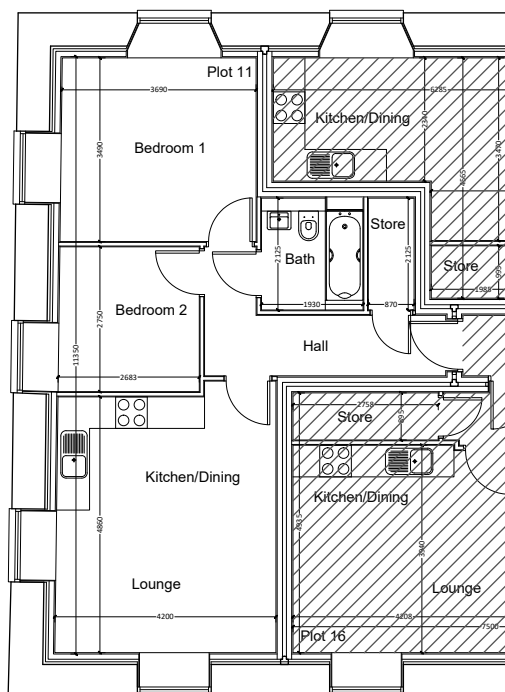
Plot 10

Bleach Croft Apartment Block

2 Bedroom Apartment

Approximately 55 m² / 592 ft²

(Gross Internal Area)



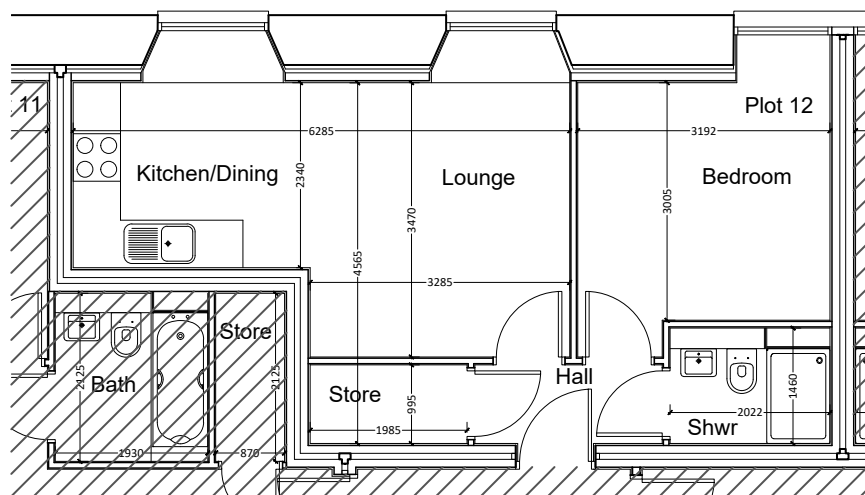
Plot 11 - Character Area B
(Ground Floor)

Plot 11, Ground Floor

1 Bedroom Apartment

Approximately 37 m² / 398 ft²

(Gross Internal Area)



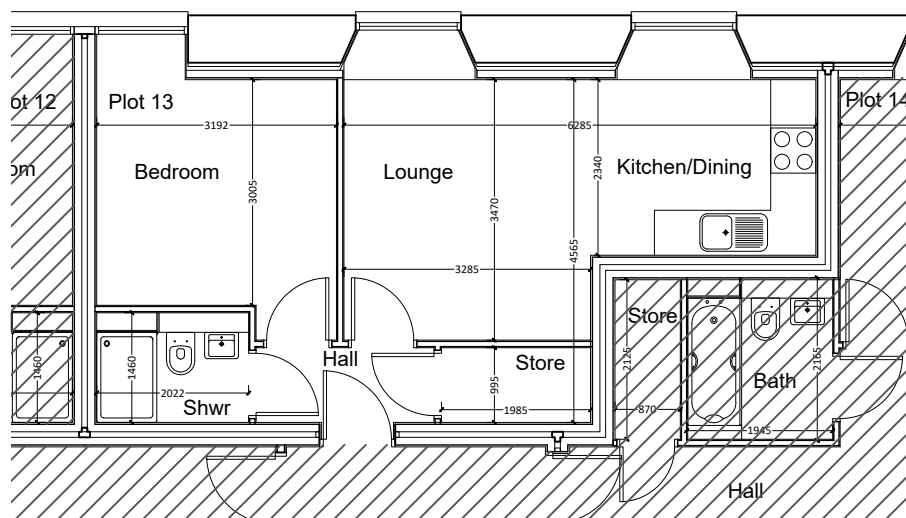
Plot 12 - Character Area B
(Ground Floor)

Plot 12, Ground Floor

1 Bedroom Apartment

Approximately 37 m² / 398 ft²

(Gross Internal Area)



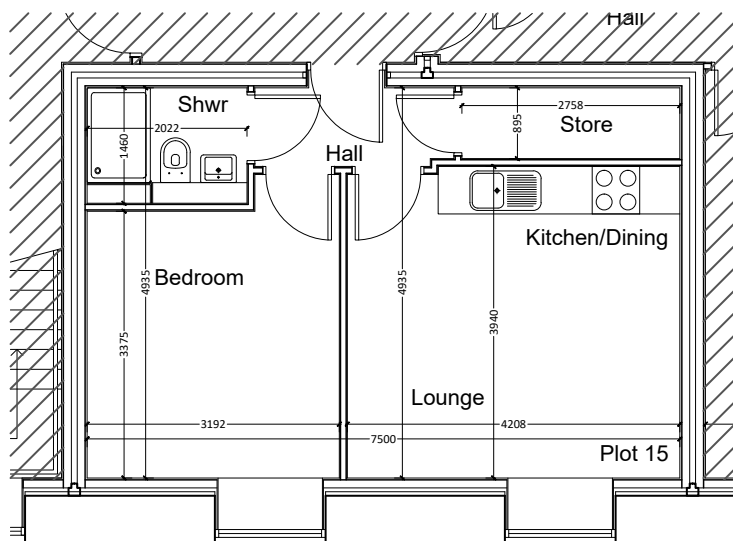
Plot 13 - Character Area B
(Ground Floor)

Plot 13, Ground Floor

(Gross Internal Area)

Plot 14, Ground Floor

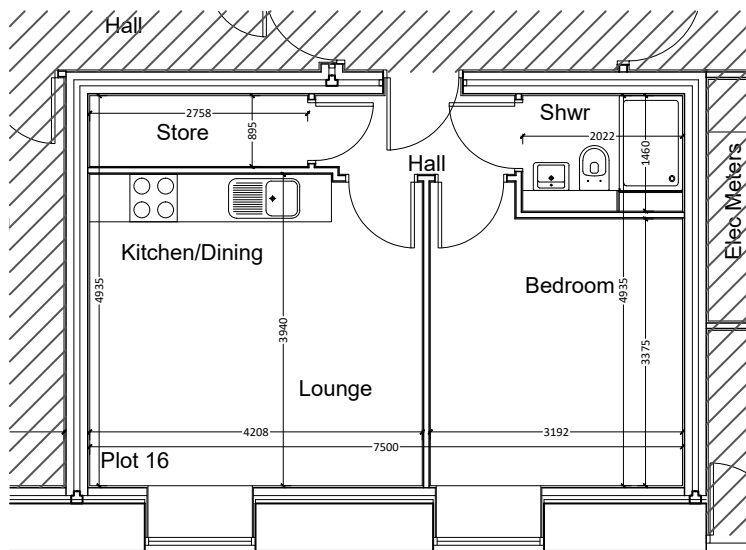
1 Bedroom Apartment
Approximately 37 m² / 398 ft²
(Gross Internal Area)



Plot 15 - Character Area B
(Ground Floor)

Plot 15, Ground Floor

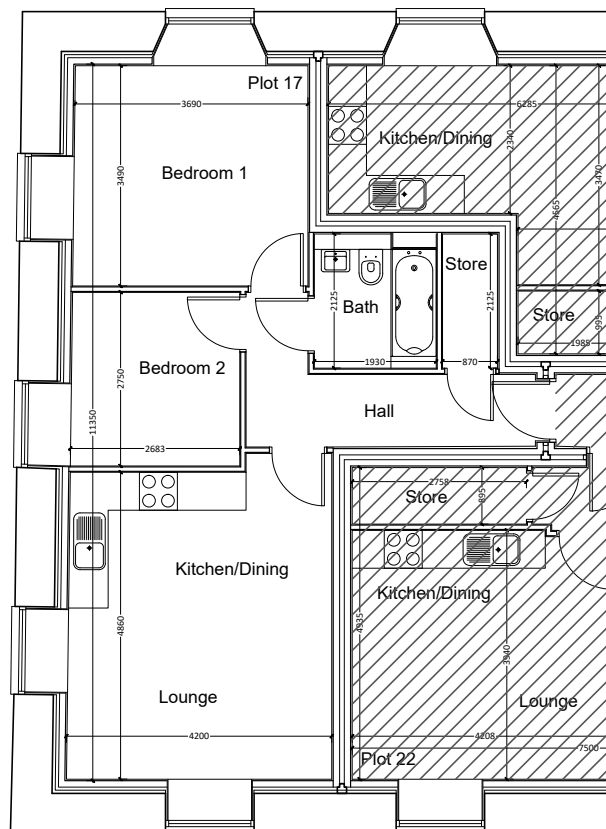
1 Bedroom Apartment
Approximately 37 m² / 398 ft²
(Gross Internal Area)



Plot 16 - Character Area B
(Ground Floor)

Plot 16, Ground Floor

2 Bedroom Apartment
Approximately 55 m² / 592 ft²
(Gross Internal Area)



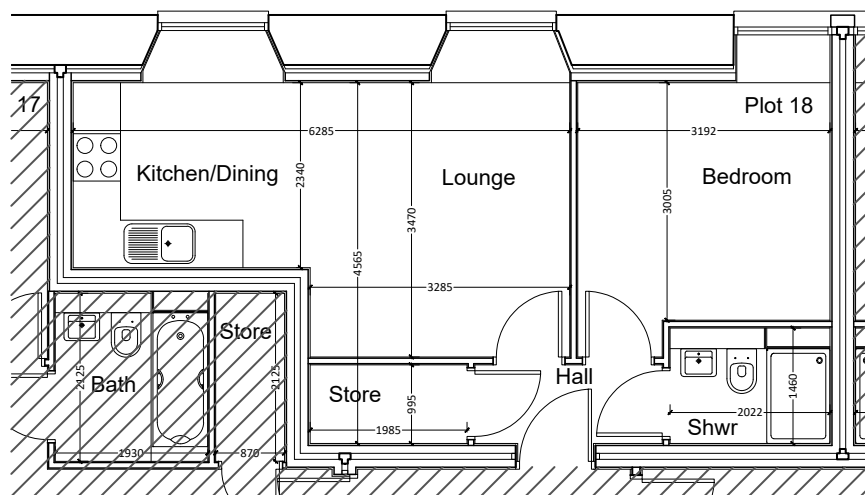
Plot 17 - Character Area B
(First Floor)

Plot 17, First Floor

1 Bedroom Apartment

Approximately 37 m² / 398 ft²

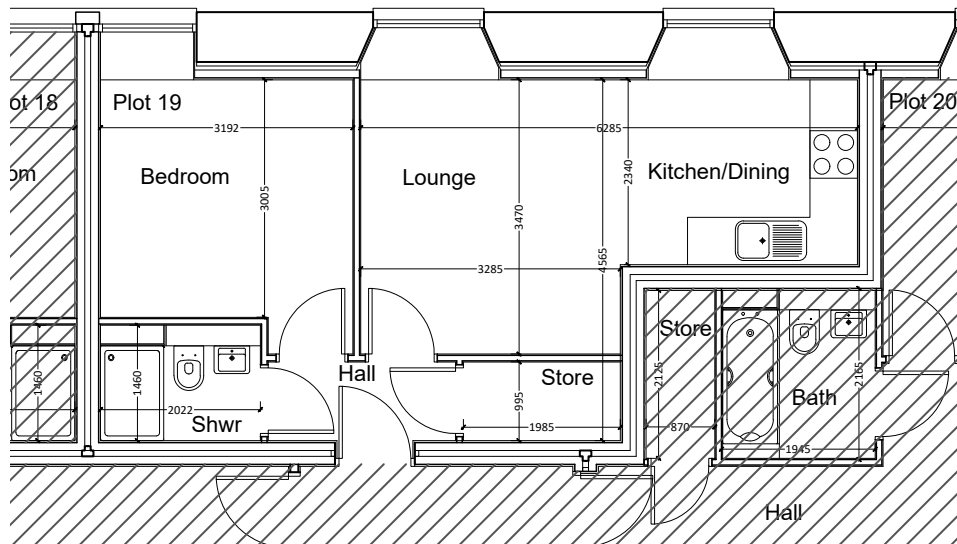
(Gross Internal Area)



Plot 18 - Character Area B
(First Floor)

Plot 18, First Floor

1 Bedroom Apartment
Approximately 37 m² / 398 ft²
(Gross Internal Area)



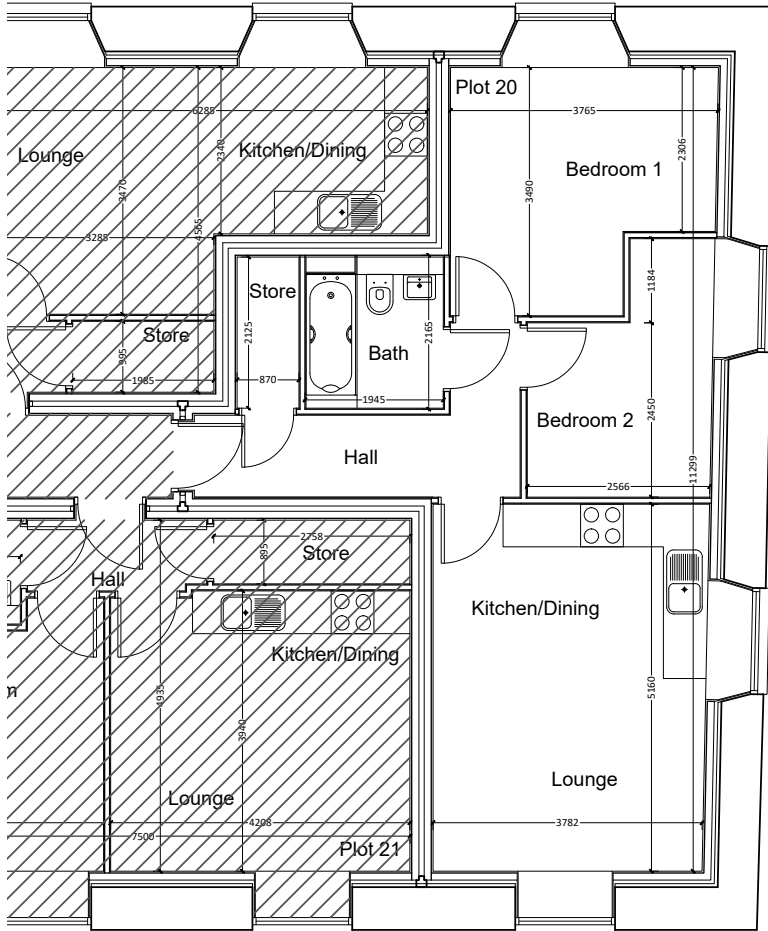
Plot 19 - Character Area B
(First Floor)

Plot 19, First Floor

2 Bedroom Apartment

Approximately 53 m² / 570 ft²

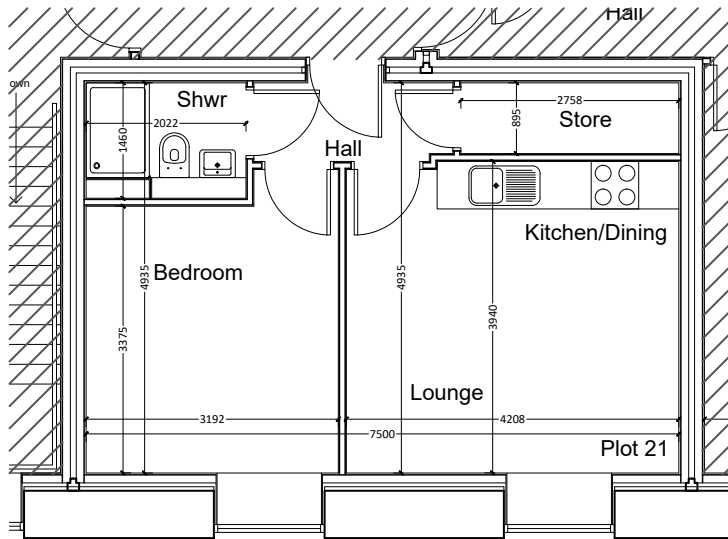
(Gross Internal Area)



Plot 20 - Character Area B

Plot 20, First Floor

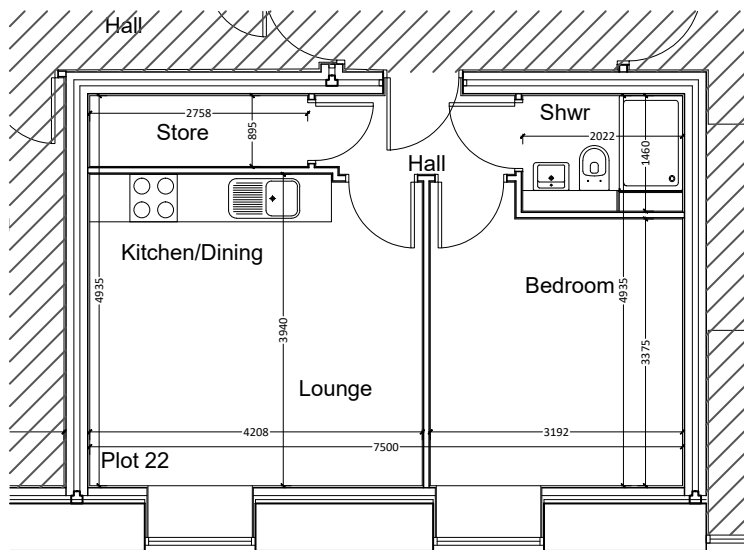
1 Bedroom Apartment
Approximately 37 m² / 398 ft²
(Gross Internal Area)



Plot 21 - Character Area B
(First Floor)

Plot 21, First Floor

1 Bedroom Apartment
Approximately 37 m² / 398 ft²
(Gross Internal Area)

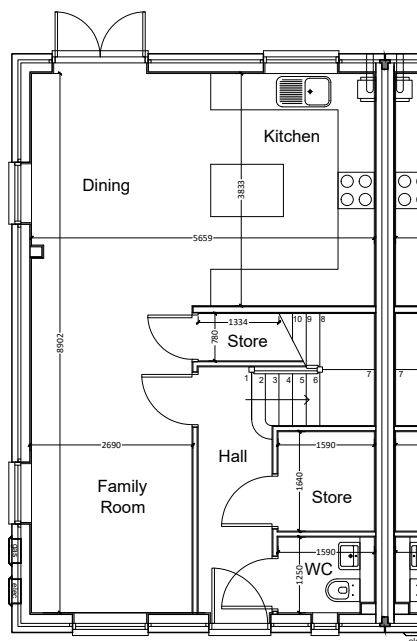


Plot 22 - Character Area B
(First Floor)

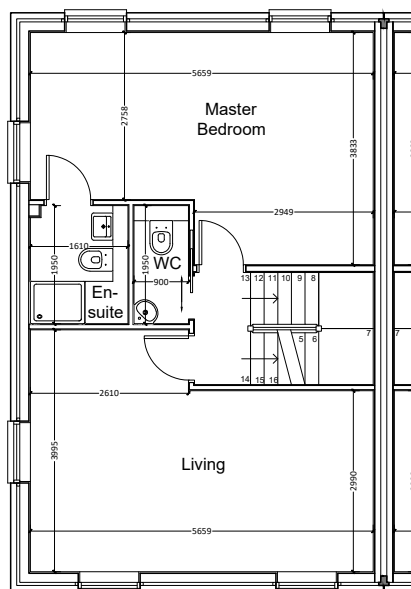
Plot 22, First Floor

4 Bedroom End Terrace

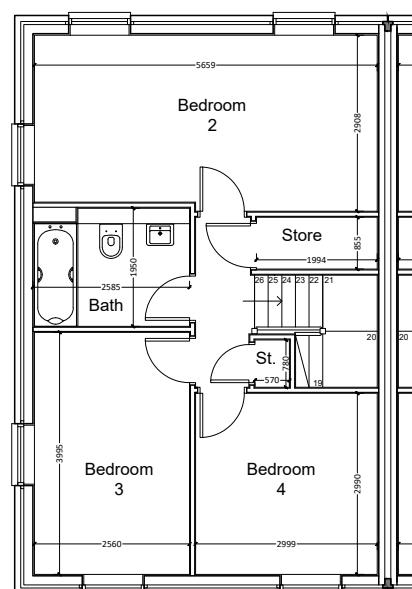
Approximately 150 m² / 1,614 ft²
(Gross Internal Area)



Plot 23 - Ground Floor Plan



Plot 23 - First Floor Plan

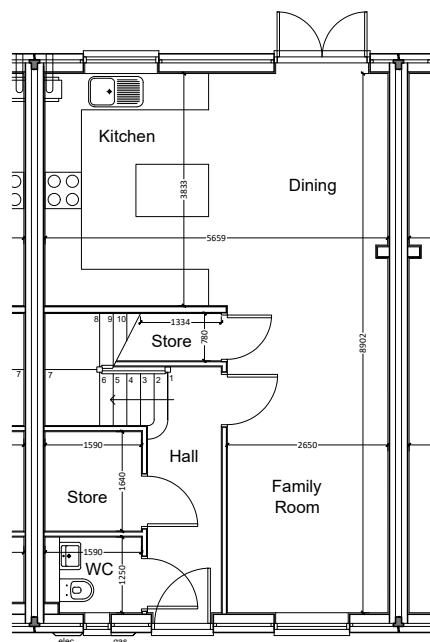


Plot 23 - Second Floor Plan

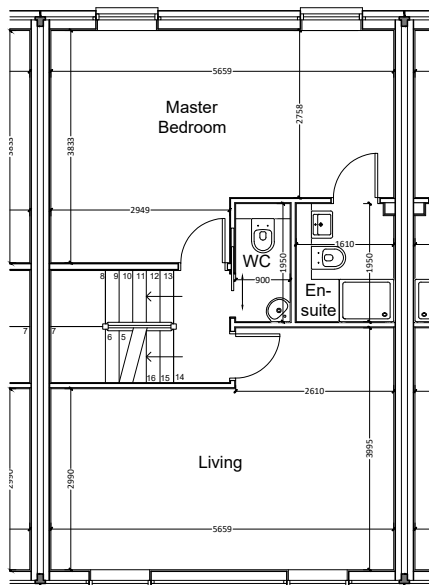
Plot 23

4 Bedroom Mid Terrace

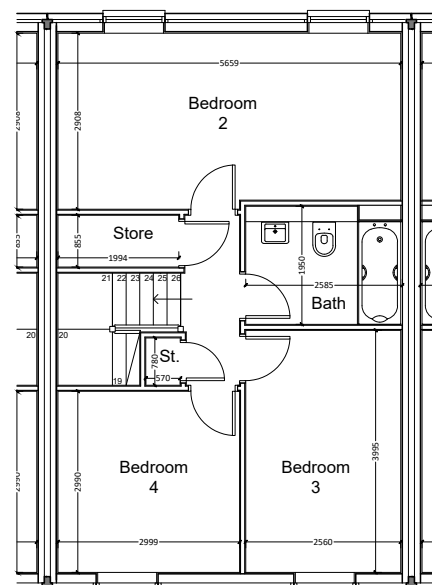
Approximately 150 m² / 1,614 ft²
(Gross Internal Area)



Plot 24 - Ground Floor Plan



Plot 24 - First Floor Plan

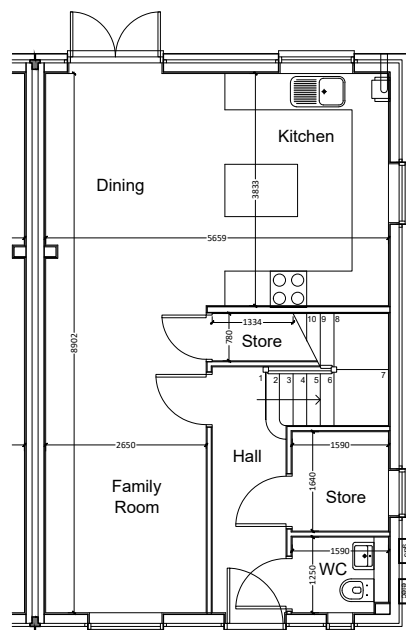


Plot 24 - Second Floor Plan

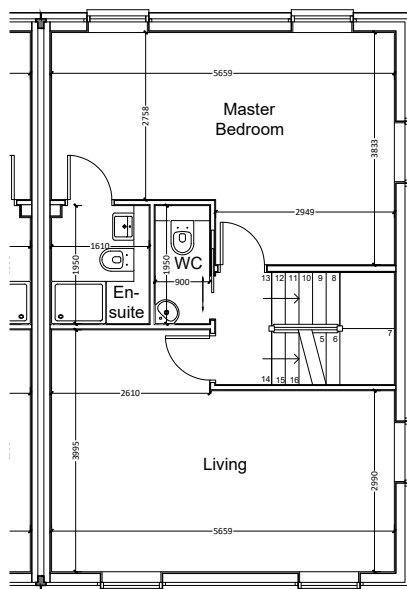
Plot 24

4 Bedroom End Terrace

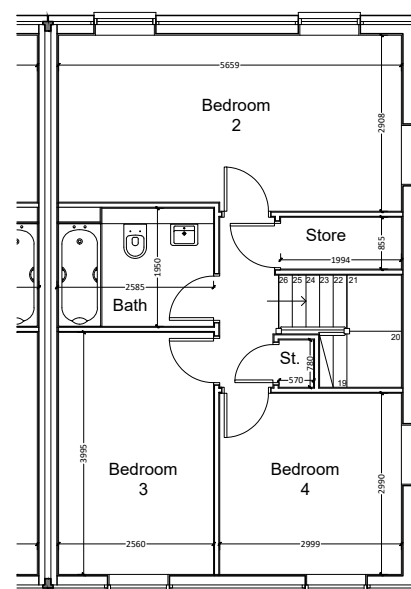
Approximately 150 m² / 1,614 ft²
(Gross Internal Area)



Plot 25 - Ground Floor Plan



Plot 25 - First Floor Plan



Plot 25 - Second Floor Plan

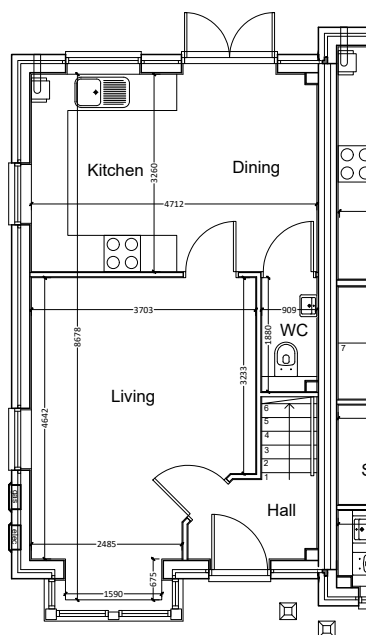
Plot 25

3 Bedroom End Terrace

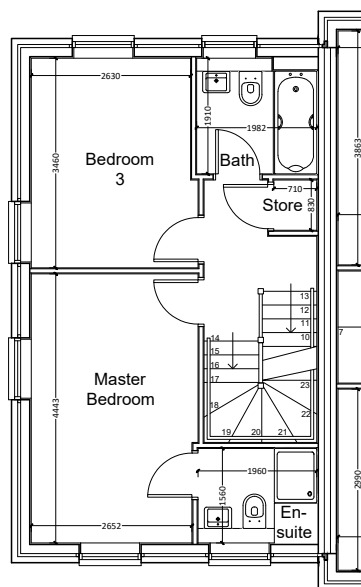
3 Bedroom, 3 Storey Dwelling

Approximately 104 m² / 1,119 ft²

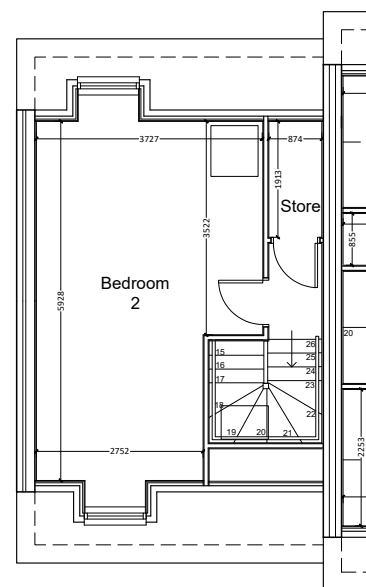
(Gross Internal Area)



Plot 26 - Ground Floor Plan



Plot 26 - First Floor Plan



Plot 26 - Second Floor Plan

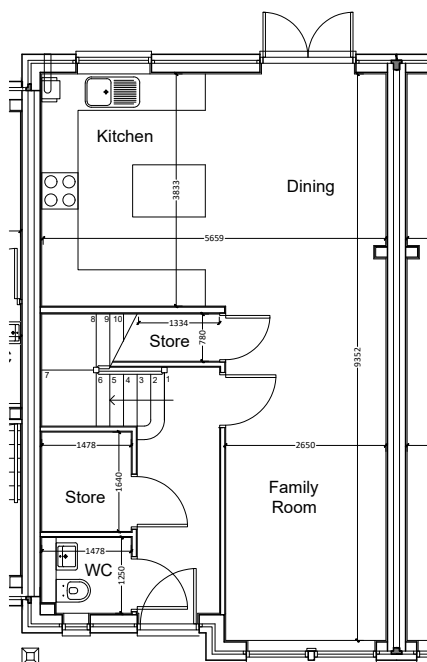
Plot 26

4 Bedroom Mid Terrace

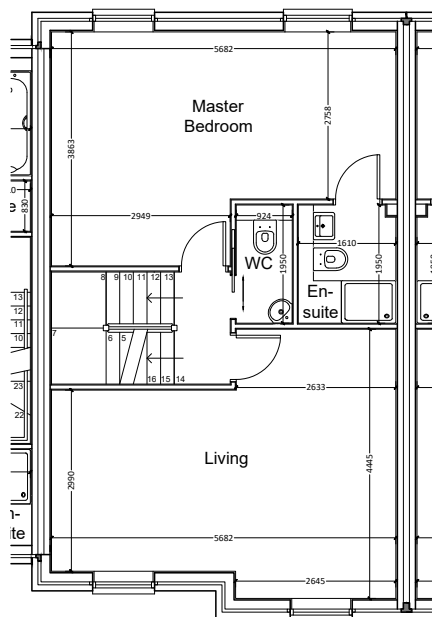
4 Bedroom, 3 Storey Dwelling

Approximately 150 m² / 1,615 ft²

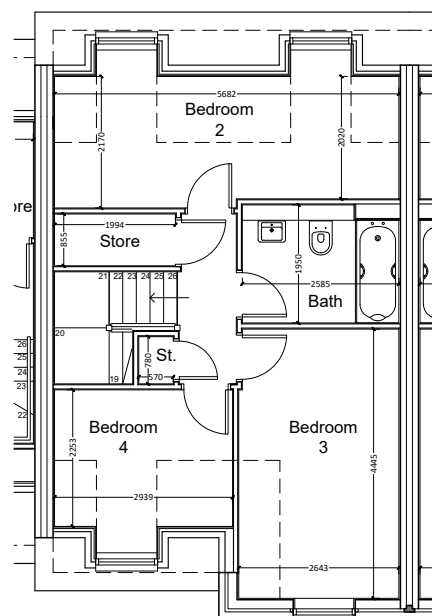
(Gross Internal Area)



Plot 27 - Ground Floor Plan



Plot 27 - First Floor Plan



Plot 27 - Second Floor Plan

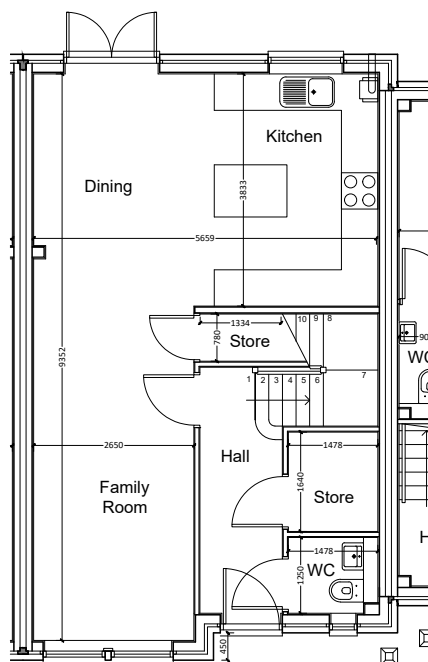
Plot 27

4 Bedroom Mid Terrace

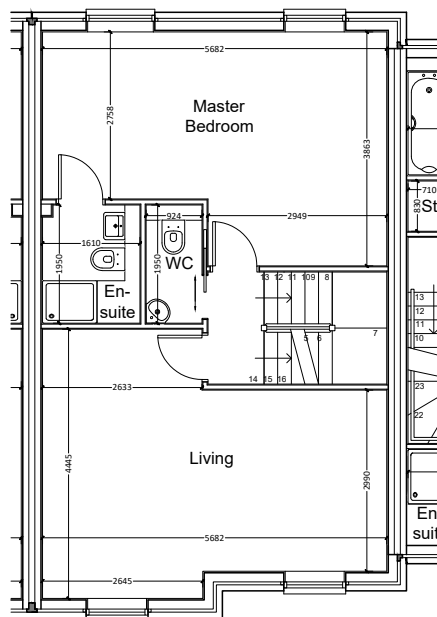
4 Bedroom, 3 Storey Dwelling

Approximately 150 m² / 1,615 ft²

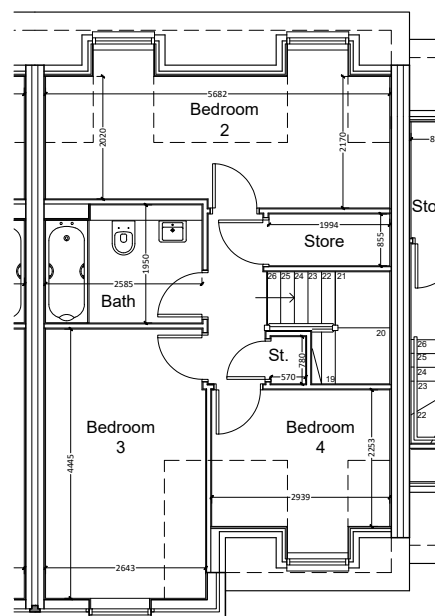
(Gross Internal Area)



Plot 28 - Ground Floor Plan



Plot 28 - First Floor Plan



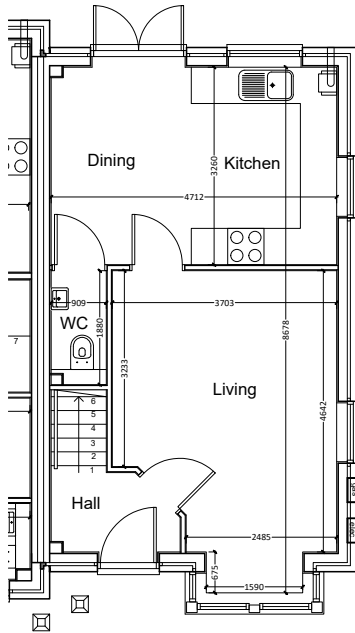
Plot 28 - Second Floor Plan

Plot 28

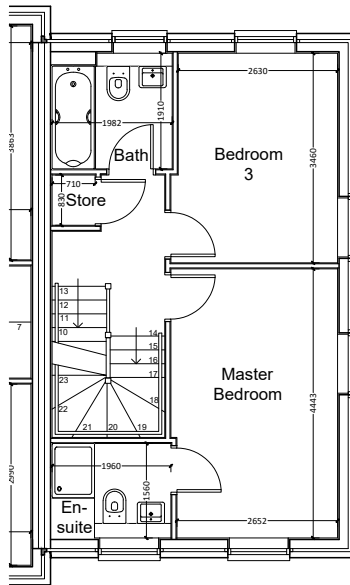
3 Bedroom End Terrace

3 Bedroom, 3 Storey Dwelling

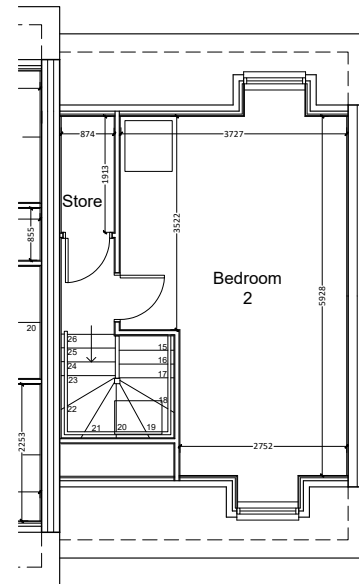
Approximately 104 m² / 1,119 ft²
(Gross Internal Area)



Plot 29 - Ground Floor Plan



Plot 29 - First Floor Plan



Plot 29 - Second Floor Plan

Plot 29



0161 218 1303 sales@viaducthousing.com

**CONSUMER
CODE FOR
HOME BUILDERS**

www.consumercode.co.uk

Protection for new-build home buyers



Viaduct Partnerships Ltd is a wholly owned of Stockport Homes and part of SHG.

Registered in England and Wales No: 10330045

Registered Office: Stockport Homes Group, Cornerstone, 2 Edward Street, Stockport SK1 3NQ