

# The *Former* Compstall Printworks Houses



Protection for new-build home buyers



Viaduct Partnerships Ltd is a wholly owned of Stockport Homes and part of SHG.

Registered in England and Wales No: 10330045

Registered Office: Stockport Homes Group, Cornerstone, 2 Edward Street, Stockport SK1 3NQ

# Welcome to Compstall



**The former Compstall Printworks is a new and exciting development which will bring 32 affordable homes to the market.**

The project will transform the previous Compstall Printworks, which has been vacant for more than a decade; preserving structures such as the renowned stone archway and bleach house - the only surviving 19th century building. Nestled in the heart of Compstall, only a stones throw from Etherow Park these homes provide the perfect blend of modern comfort with historic charm.

\*25%-75% Shares available, based on individual circumstances.  
Rent and service charges apply, please refer to key information.

# Plenty to do, Plenty to see

Discover the beauty of Etherow Country Park, local eateries and community spirit as the start of your journey in Compstall begins. Within close proximity to Marple Bridge, Marple and Romiley, this development is the perfect place for growing families, first time buyers or those looking to downsize, hosting an abundance of schools, transport links and leisure activities.



## Schools

Ludworth Primary School

Brabyns Preparatory School and Nursery

Marple Hall School

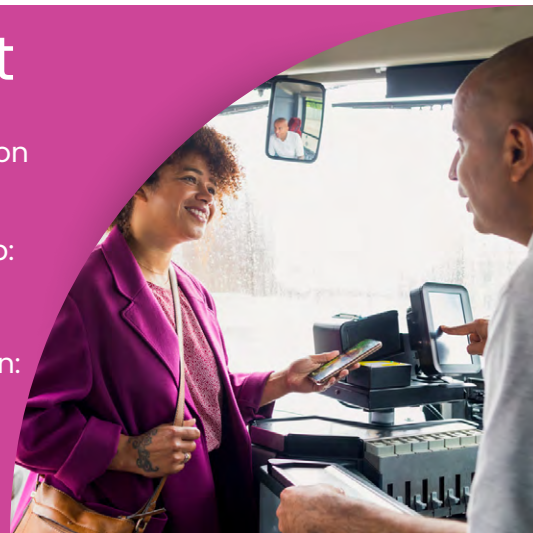
Harrytown Catholic High School

## Transport

Romiley Train Station  
5 min drive

Compstall Bus Stop:  
1 min walk

Marple Train Station:  
25 min walk



## Leisure

✕ Fold Bistro

✕ Midland Hotel

👣 Brabyns Park

👣 Andrew Arms

👣 Northumberland Arms

👣 The Ridge Climbing Centre

👣 Etherow Country Park

👣 Werneth Low Country Park

# The Printworks Site Plan



Plots 1-22 Underground parking available (Apartments access to 1 space/Houses access to 2 spaces)

Plot 2 – Show apartment coming soon

Plots 23-29 2 Spaces per home, see site plan for location.

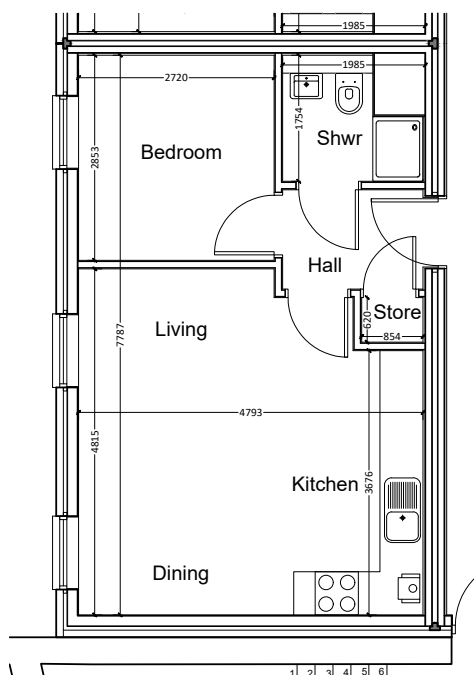
# Coach House

## 1 Bedroom Apartment

1 Bedroom Apartment

**Approximately 37 m<sup>2</sup> / 398 ft<sup>2</sup>**

(Gross Internal Area)



Plot 1 - Character Area A  
(Ground Floor)

## Plot 1

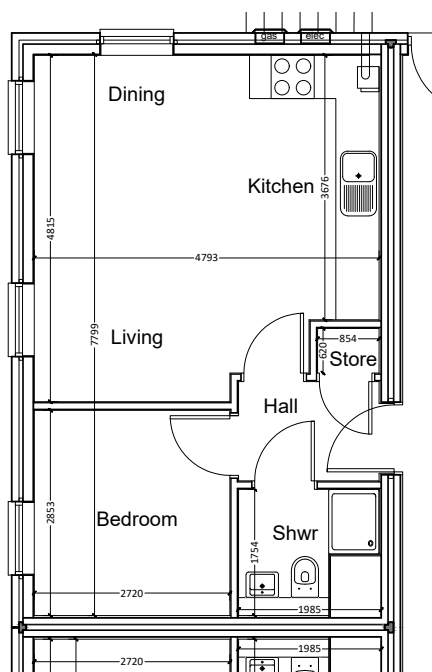
# Coach House

## 1 Bedroom Apartment

1 Bedroom Apartment

**Approximately 37 m<sup>2</sup> / 398 ft<sup>2</sup>**

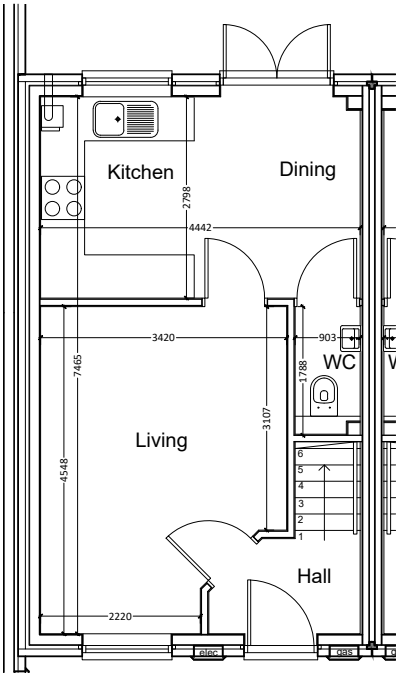
(Gross Internal Area)



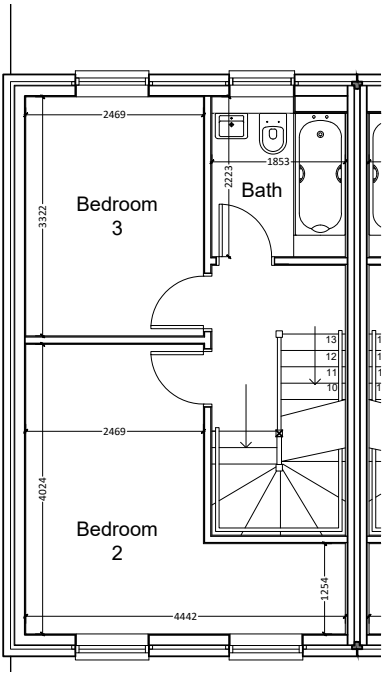
Plot 2 - Character Area A  
(Ground Floor)

## Plot 2

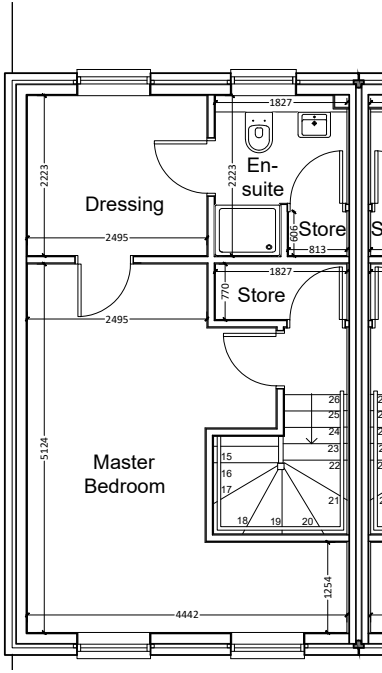
3 Bedroom, 3 Storey Dwelling  
**Approximately 99 m<sup>2</sup> / 1,065 ft<sup>2</sup>**  
(Gross Internal Area)



Plot 3 - Ground Floor Plan



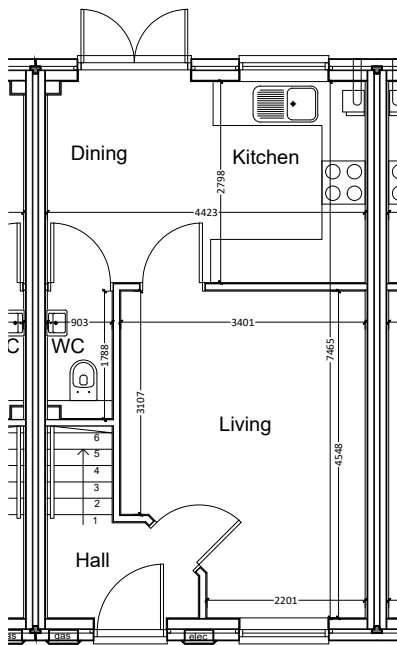
Plot 3 - First Floor Plan



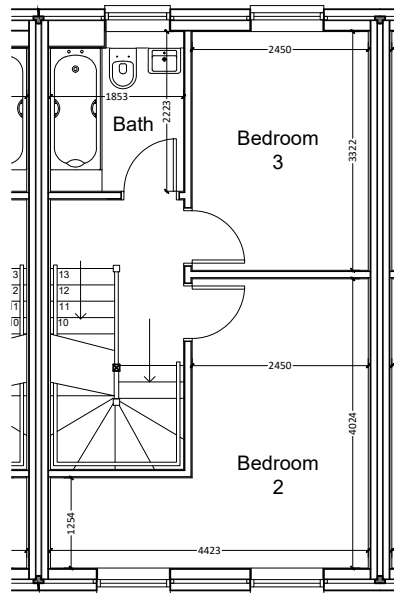
Plot 3 - Second Floor Plan

Plot 3

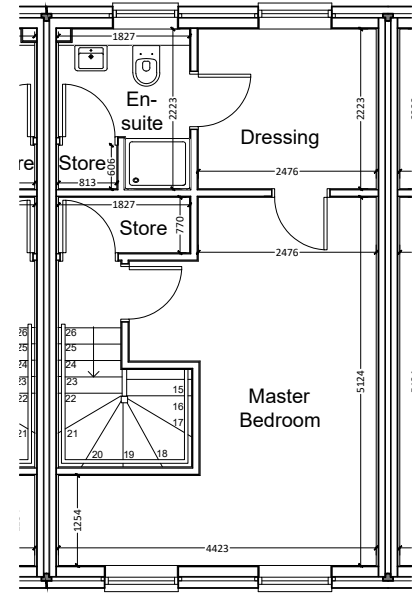
3 Bedroom, 3 Storey Dwelling  
**Approximately 99 m<sup>2</sup> / 1,065 ft<sup>2</sup>**  
 (Gross Internal Area)



Plot 4 - Ground Floor Plan



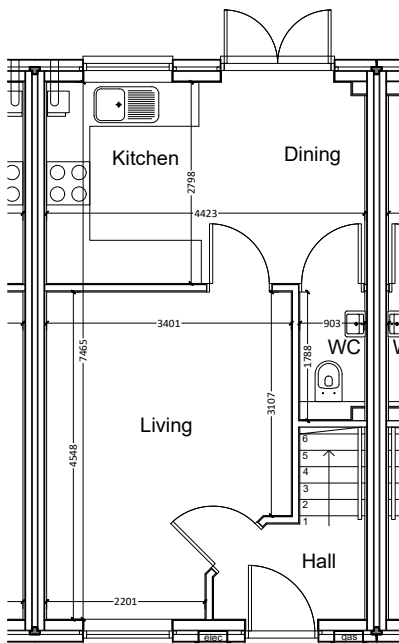
Plot 4 - First Floor Plan



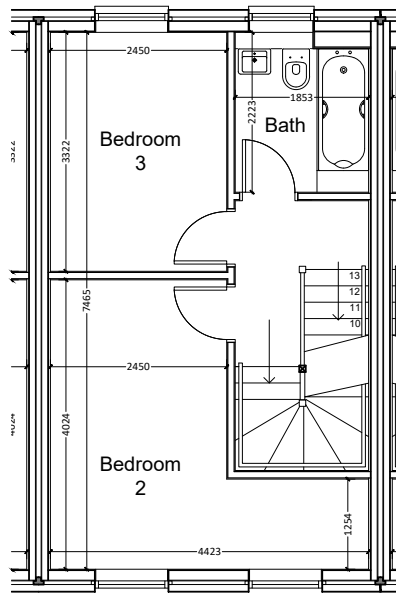
Plot 4 - Second Floor Plan

## Plot 4

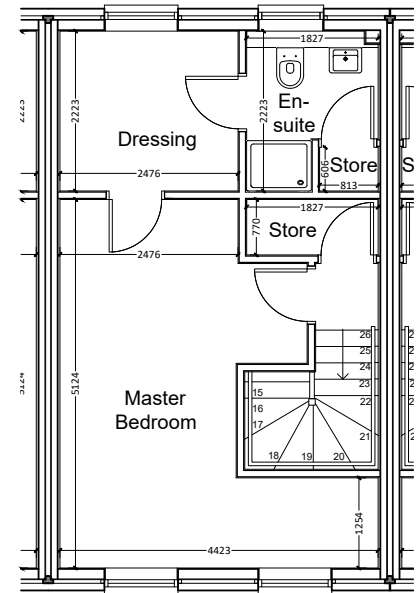
**3 Bedroom, 3 Storey Dwelling**  
**Approximately 99 m<sup>2</sup> / 1,065 ft<sup>2</sup>**  
(Gross Internal Area)



### Plot 5 - Ground Floor Plan



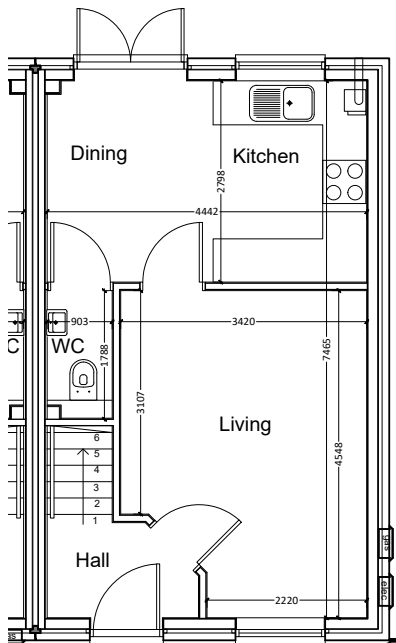
### Plot 5 - First Floor Plan



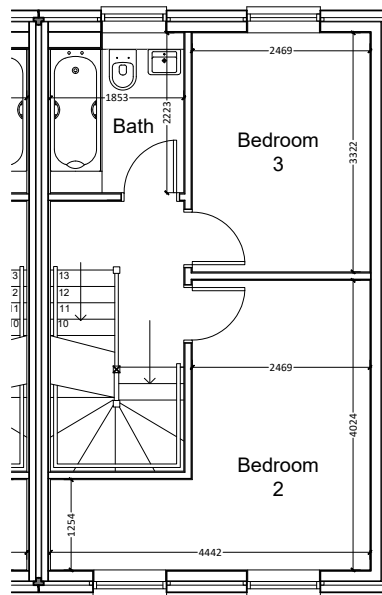
### Plot 5 - Second Floor Plan

## Plot 5

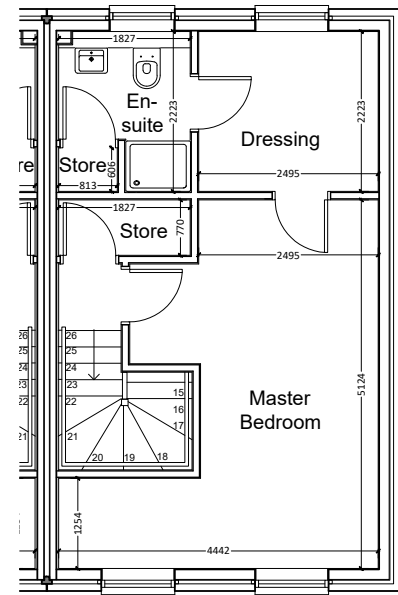
**3 Bedroom, 3 Storey Dwelling**  
**Approximately 99 m<sup>2</sup> / 1,065 ft<sup>2</sup>**  
 (Gross Internal Area)



### Plot 6 - Ground Floor Plan



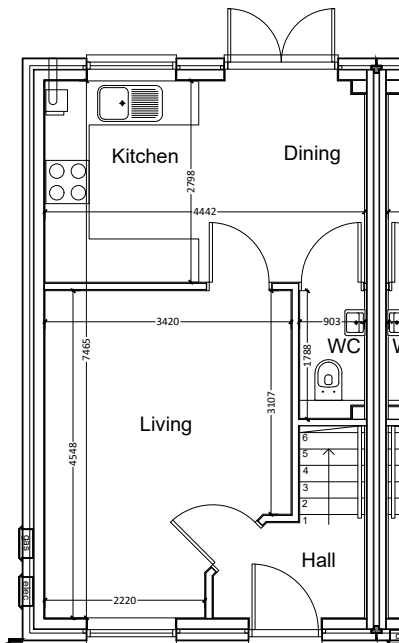
### Plot 6 - First Floor Plan



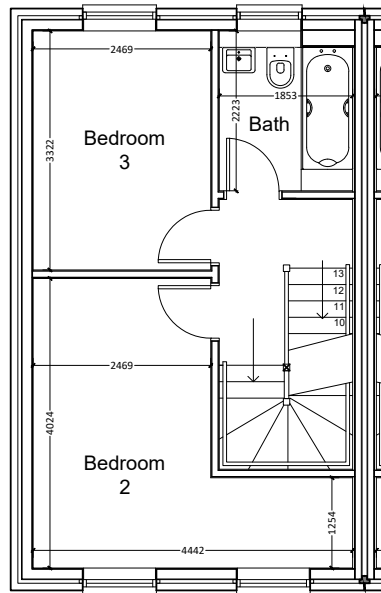
### Plot 6 - Second Floor Plan

## Plot 6

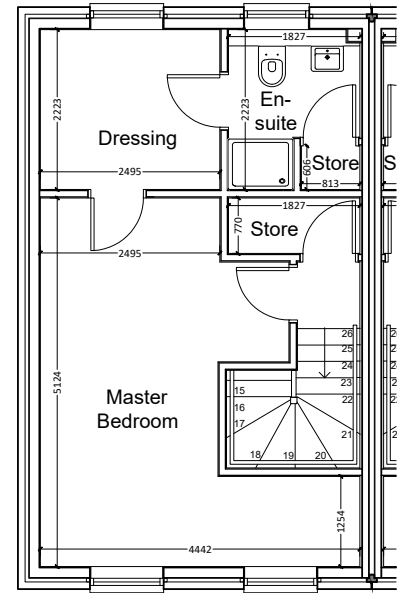
3 Bedroom, 3 Storey Dwelling  
**Approximately 99 m<sup>2</sup> / 1,065 ft<sup>2</sup>**  
 (Gross Internal Area)



Plot 7 - Ground Floor Plan



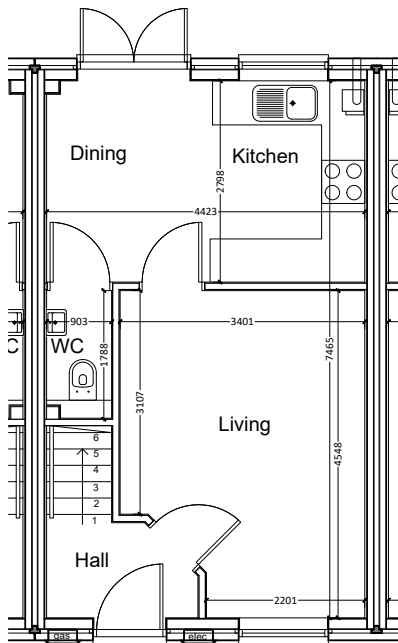
Plot 7 - First Floor Plan



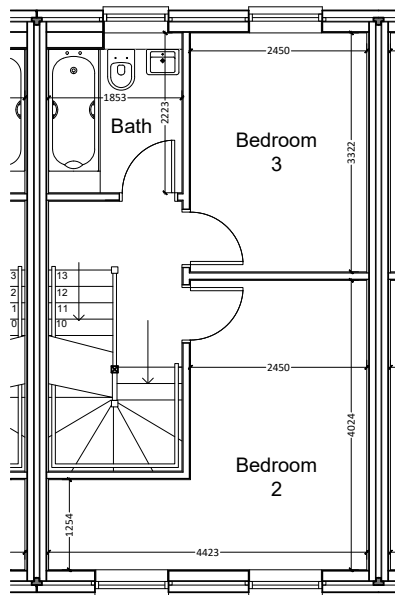
Plot 7 - Second Floor Plan

## Plot 7

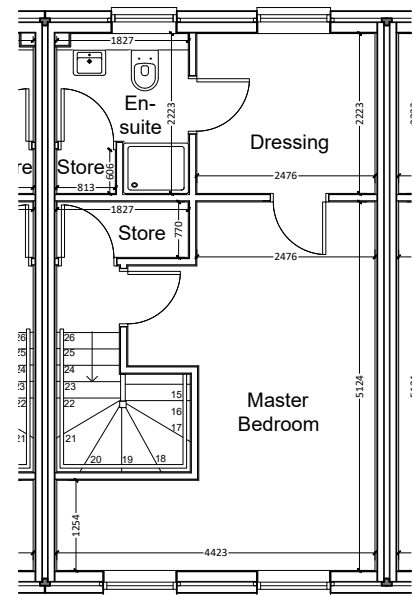
3 Bedroom, 3 Storey Dwelling  
**Approximately 99 m<sup>2</sup> / 1,065 ft<sup>2</sup>**  
(Gross Internal Area)



Plot 8 - Ground Floor Plan



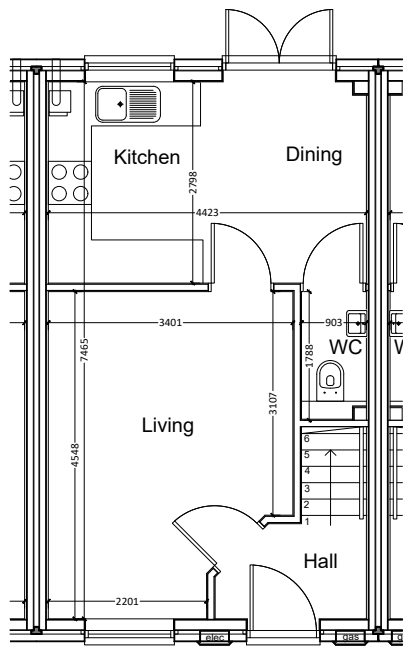
Plot 8 - First Floor Plan



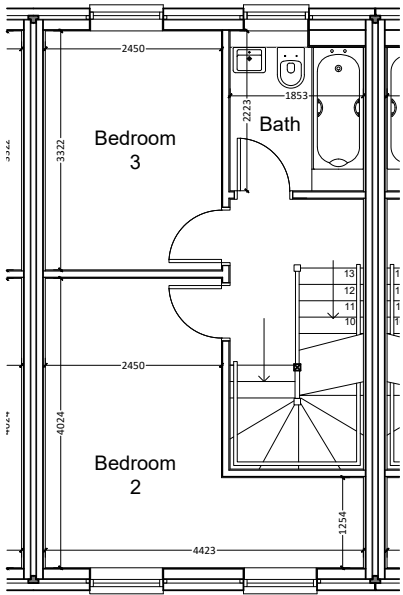
Plot 8 - Second Floor Plan

## Plot 8

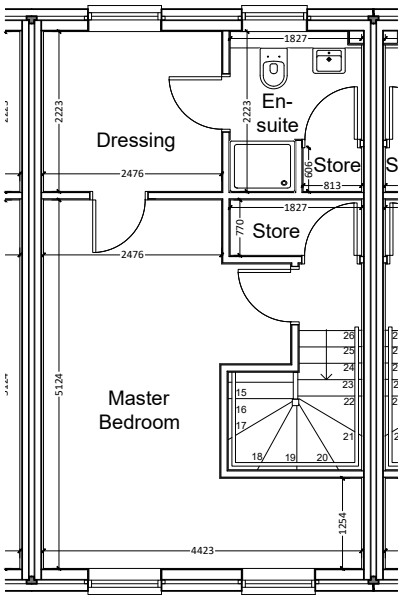
3 Bedroom, 3 Storey Dwelling  
**Approximately 99 m<sup>2</sup> / 1,065 ft<sup>2</sup>**  
(Gross Internal Area)



Plot 9 - Ground Floor Plan



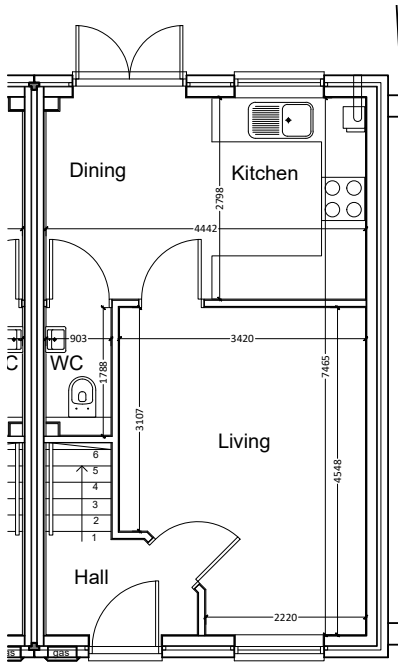
Plot 9 - First Floor Plan



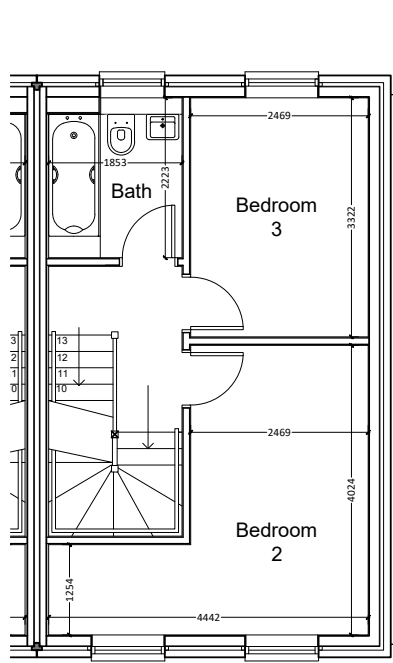
Plot 9 - Second Floor Plan

## Plot 9

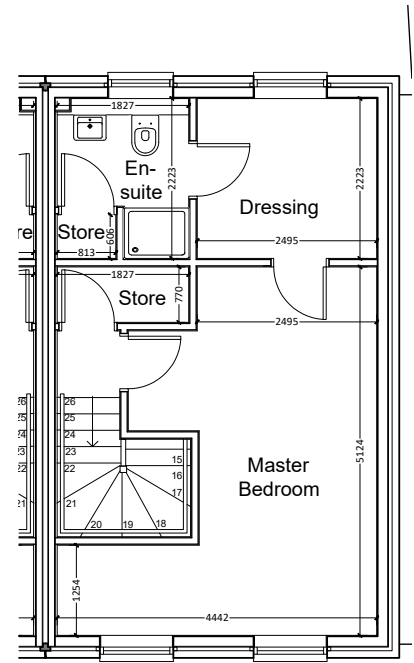
**3 Bedroom, 3 Storey Dwelling**  
**Approximately 99 m<sup>2</sup> / 1,065 ft<sup>2</sup>**  
 (Gross Internal Area)



### Plot 10 - Ground Floor Plan



### Plot 10 - First Floor Plan



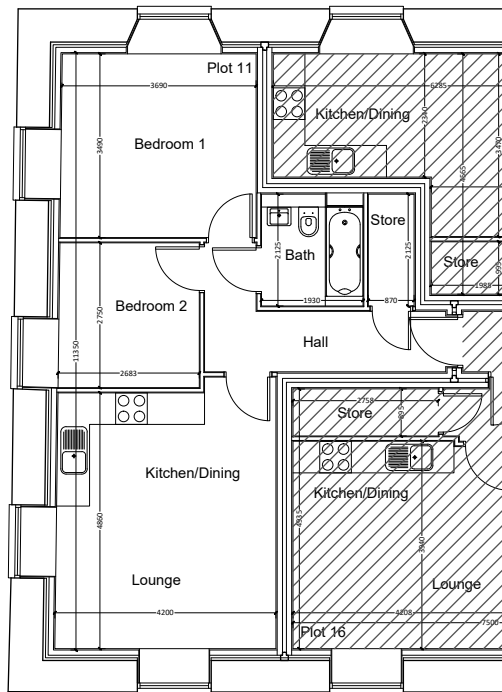
### Plot 10 - Second Floor Plan

## Plot 10

## Printworks Apartments Apartment Block

## 2 Bedroom Apartment

**Approximately 55 m<sup>2</sup> / 592 ft<sup>2</sup>**  
(Gross Internal Area)



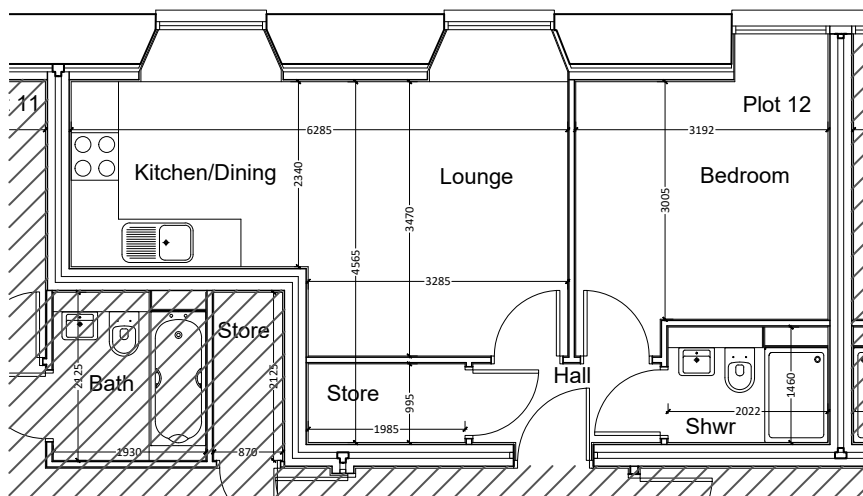
Plot 11 - Character Area B  
(Ground Floor)

## Plot 11, Ground Floor

## 1 Bedroom Apartment

**Approximately 37 m<sup>2</sup> / 398 ft<sup>2</sup>**

(Gross Internal Area)



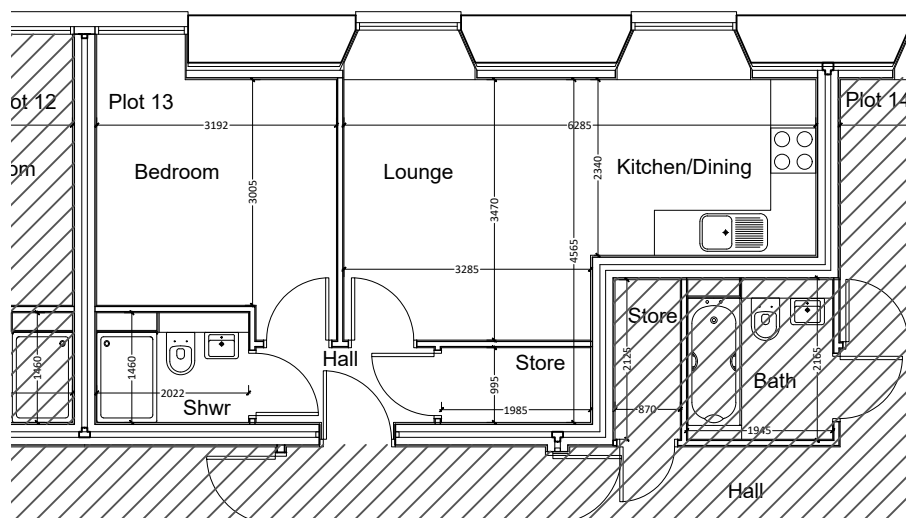
Plot 12 - Character Area B  
(Ground Floor)

## Plot 12, Ground Floor

## 1 Bedroom Apartment

**Approximately 37 m<sup>2</sup> / 398 ft<sup>2</sup>**

(Gross Internal Area)



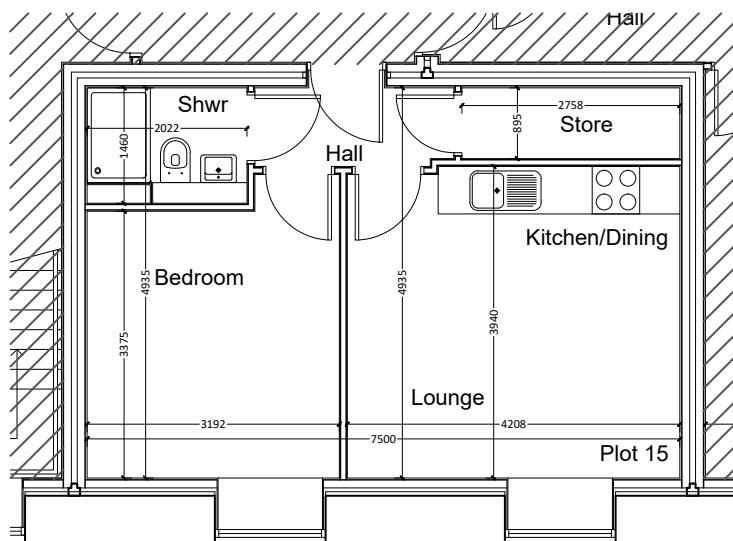
Plot 13 - Character Area B  
(Ground Floor)

## Plot 13, Ground Floor

(Gross Internal Area)

## Plot 14, Ground Floor

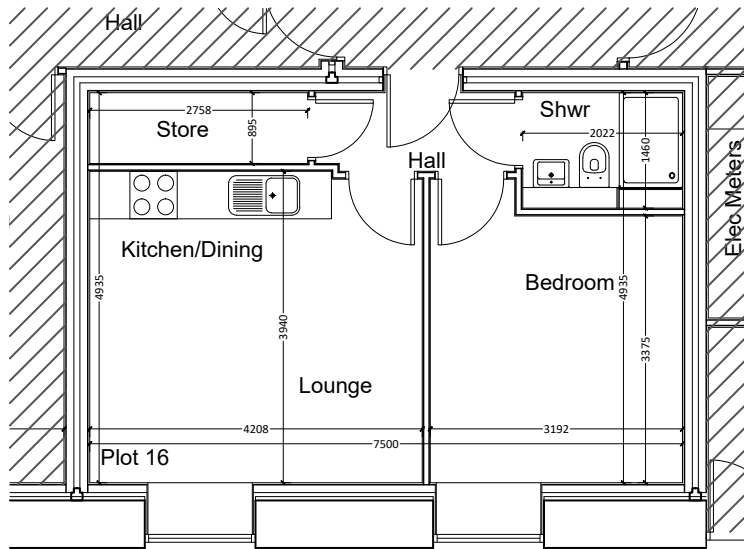
1 Bedroom Apartment  
**Approximately 37 m<sup>2</sup> / 398 ft<sup>2</sup>**  
(Gross Internal Area)



Plot 15 - Character Area B  
(Ground Floor)

## Plot 15, Ground Floor

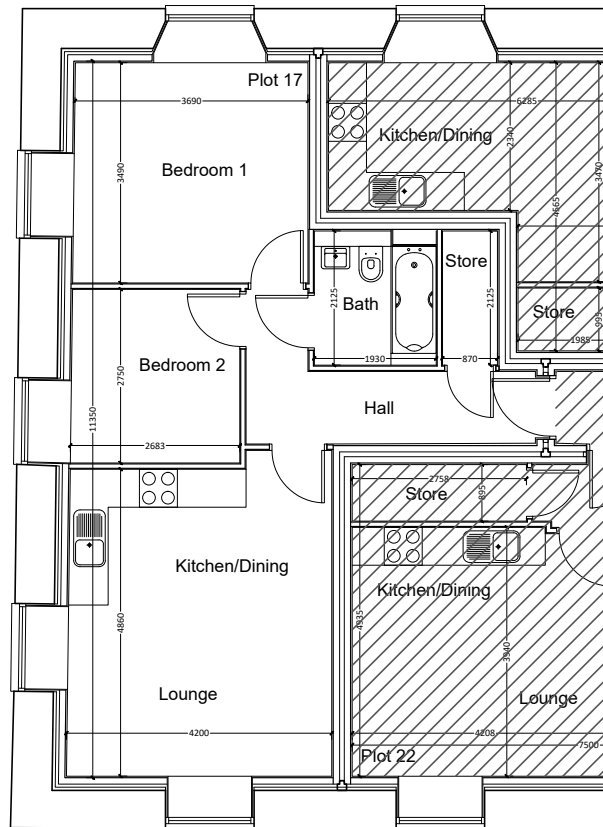
1 Bedroom Apartment  
**Approximately 37 m<sup>2</sup> / 398 ft<sup>2</sup>**  
(Gross Internal Area)



Plot 16 - Character Area B  
(Ground Floor)

## Plot 16, Ground Floor

2 Bedroom Apartment  
**Approximately 55 m<sup>2</sup> / 592 ft<sup>2</sup>**  
(Gross Internal Area)



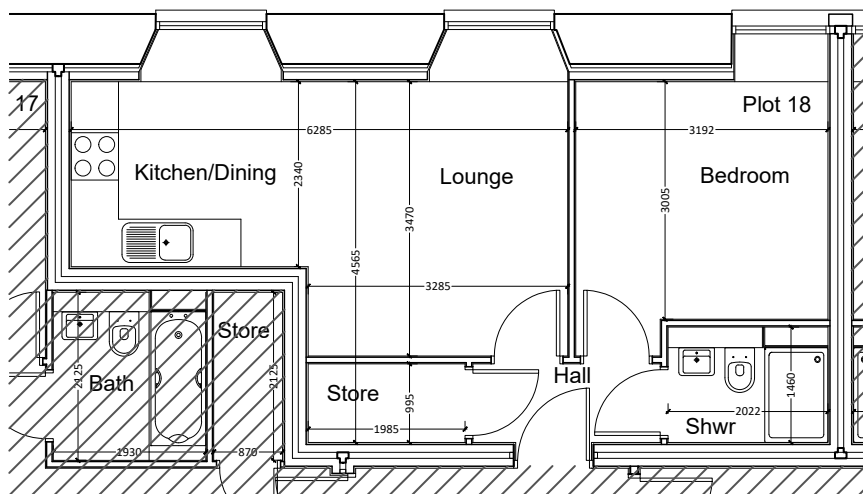
Plot 17 - Character Area B  
(First Floor)

## Plot 17, First Floor

## 1 Bedroom Apartment

**Approximately 37 m<sup>2</sup> / 398 ft<sup>2</sup>**

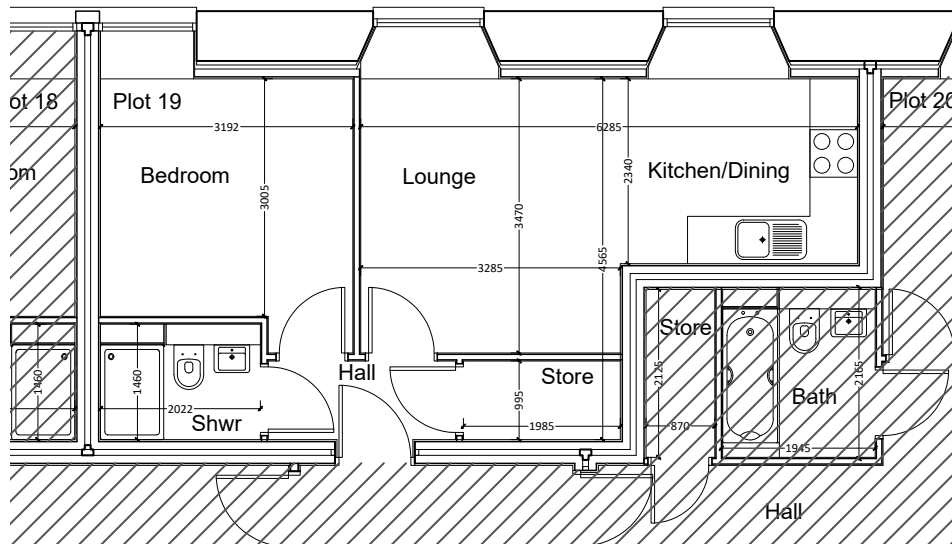
(Gross Internal Area)



Plot 18 - Character Area B  
(First Floor)

## Plot 18, First Floor

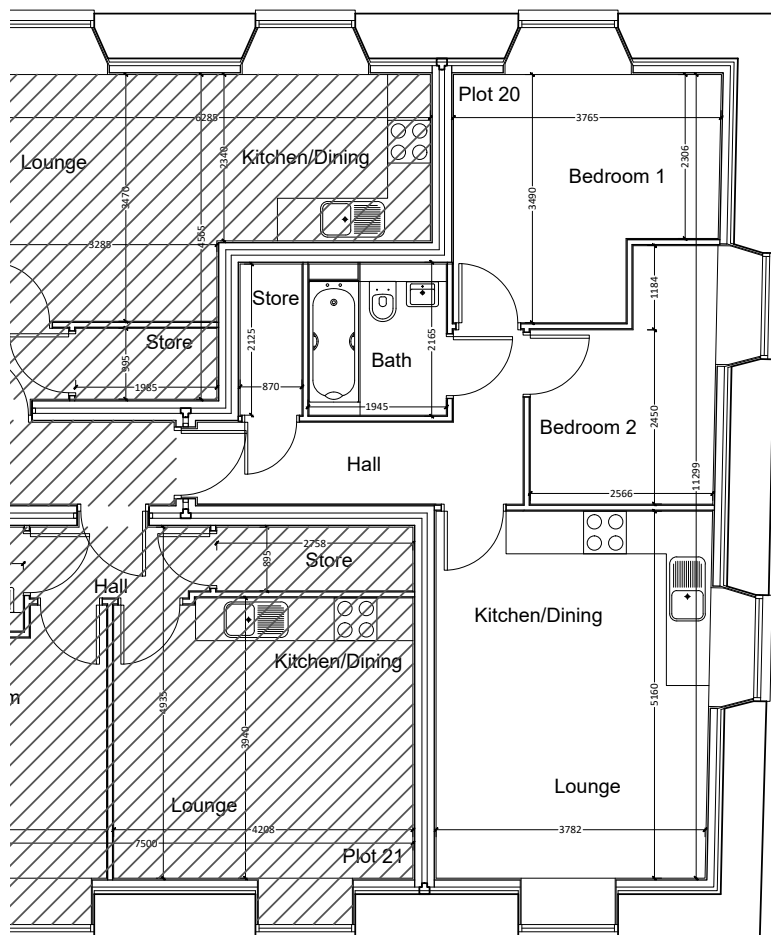
1 Bedroom Apartment  
**Approximately 37 m<sup>2</sup> / 398 ft<sup>2</sup>**  
(Gross Internal Area)



Plot 19 - Character Area B  
(First Floor)

## Plot 19, First Floor

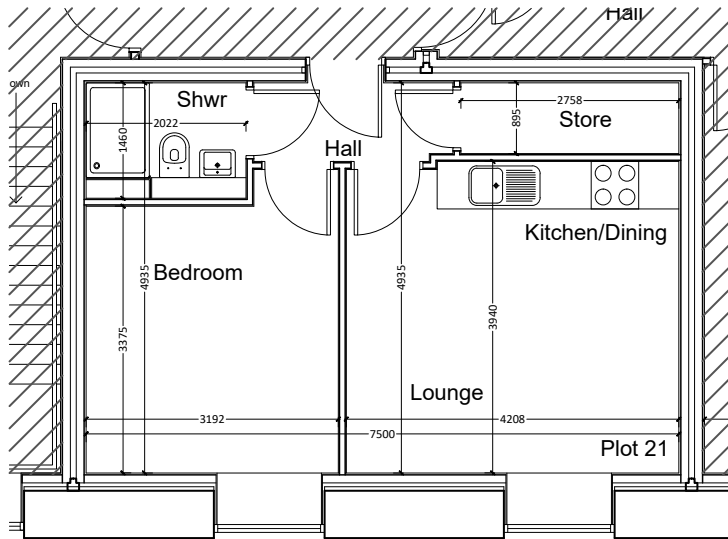
2 Bedroom Apartment  
**Approximately 53 m<sup>2</sup> / 570 ft<sup>2</sup>**  
 (Gross Internal Area)



Plot 20 - Character Area B  
 (First Floor)

## Plot 20, First Floor

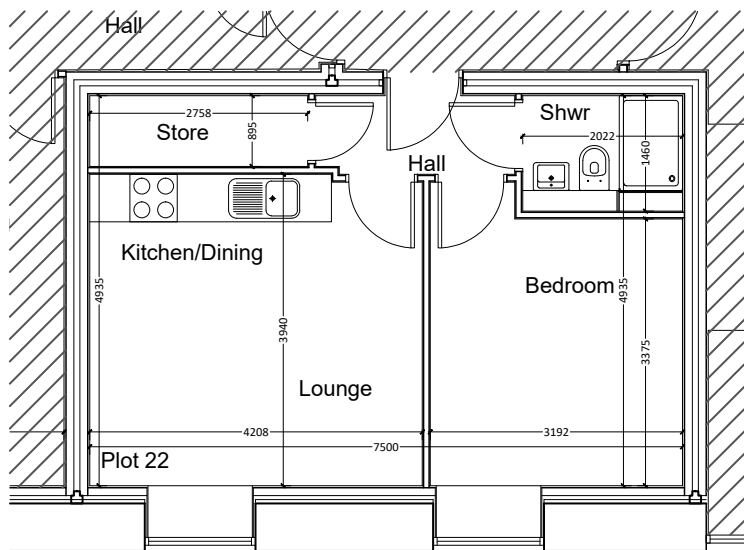
1 Bedroom Apartment  
**Approximately 37 m<sup>2</sup> / 398 ft<sup>2</sup>**  
(Gross Internal Area)



Plot 21 - Character Area B  
(First Floor)

## Plot 21, First Floor

1 Bedroom Apartment  
**Approximately 37 m<sup>2</sup> / 398 ft<sup>2</sup>**  
(Gross Internal Area)

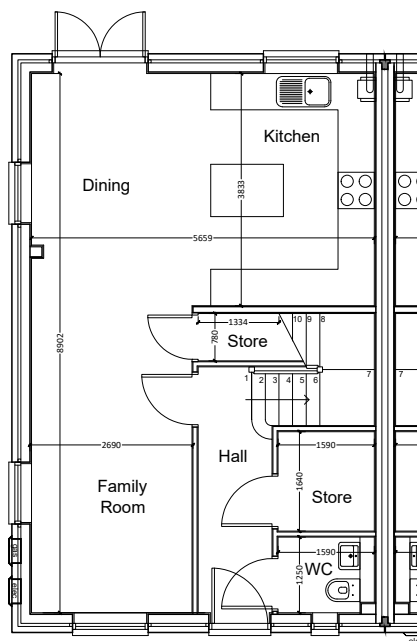


Plot 22 - Character Area B  
(First Floor)

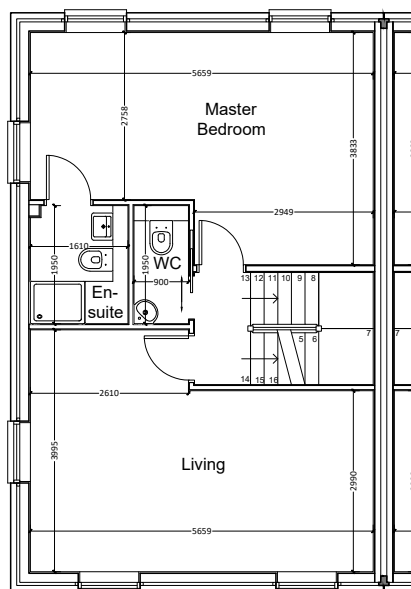
## Plot 22, First Floor

## 4 Bedroom End Terrace

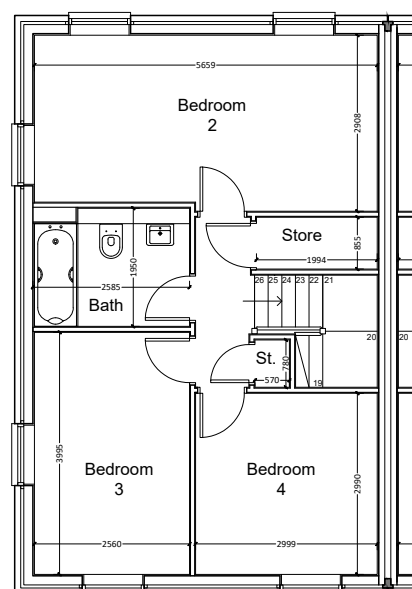
**Approximately 150 m<sup>2</sup> / 1,614 ft<sup>2</sup>**  
(Gross Internal Area)



Plot 23 - Ground Floor Plan



Plot 23 - First Floor Plan

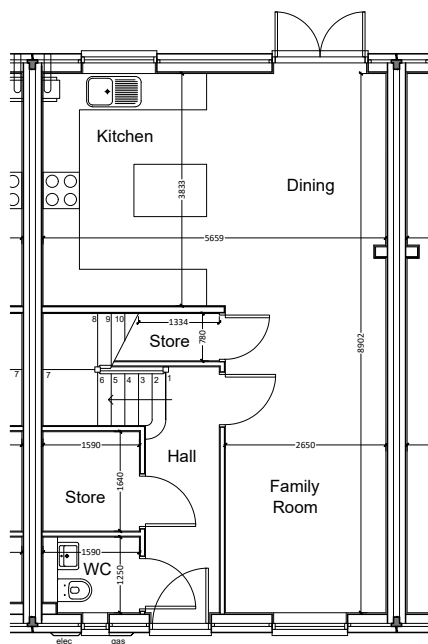


Plot 23 - Second Floor Plan

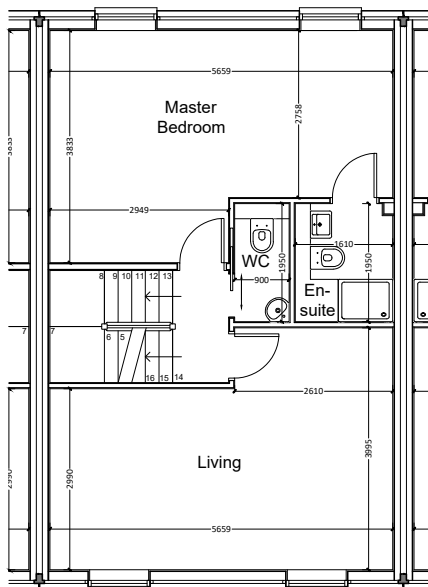
## Plot 23

## 4 Bedroom Mid Terrace

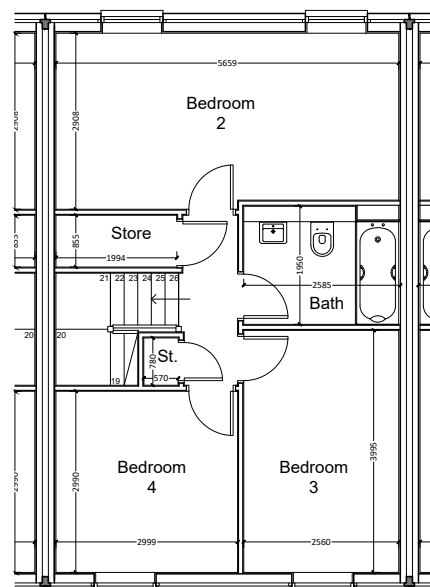
**Approximately 150 m<sup>2</sup> / 1,614 ft<sup>2</sup>**  
(Gross Internal Area)



Plot 24 - Ground Floor Plan



Plot 24 - First Floor Plan

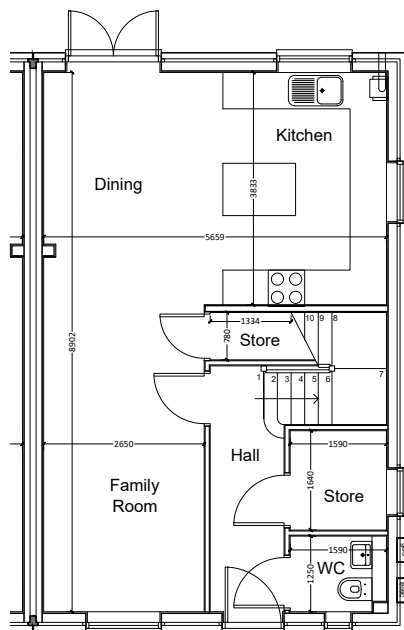


Plot 24 - Second Floor Plan

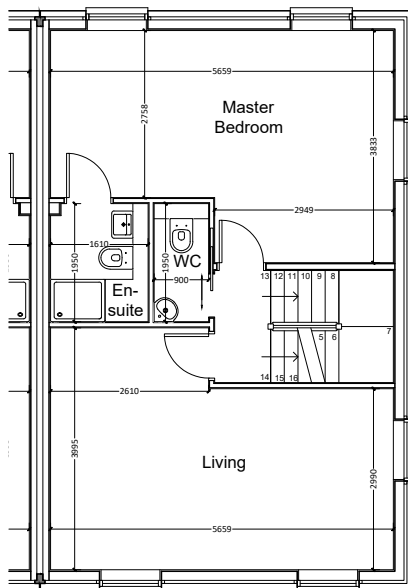
## Plot 24

## 4 Bedroom End Terrace

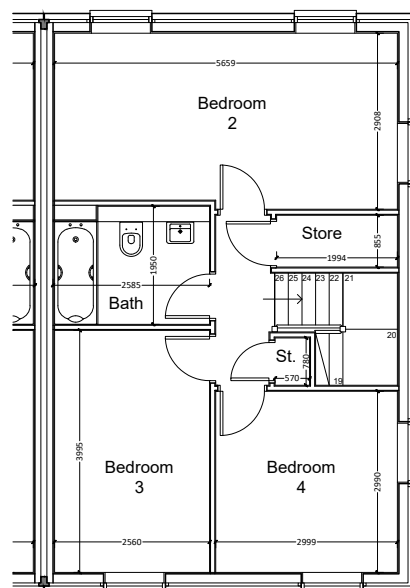
**Approximately 150 m<sup>2</sup> / 1,614 ft<sup>2</sup>**  
(Gross Internal Area)



Plot 25 - Ground Floor Plan



Plot 25 - First Floor Plan



Plot 25 - Second Floor Plan

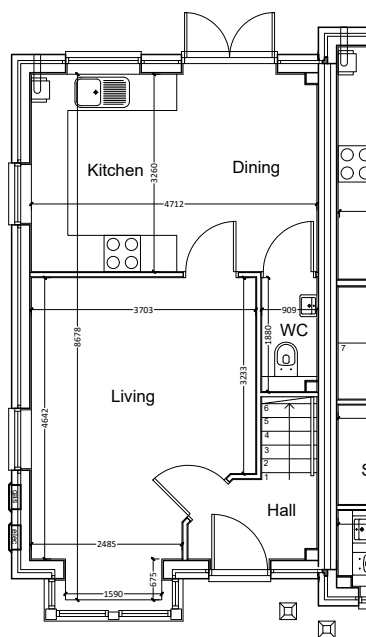
## Plot 25

## 3 Bedroom End Terrace

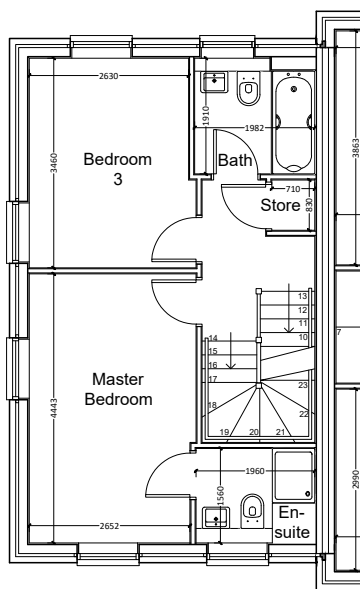
3 Bedroom, 3 Storey Dwelling

**Approximately 104 m<sup>2</sup> / 1,119 ft<sup>2</sup>**

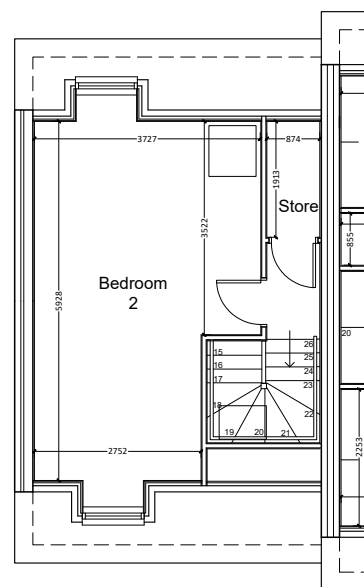
(Gross Internal Area)



Plot 26 - Ground Floor Plan



Plot 26 - First Floor Plan



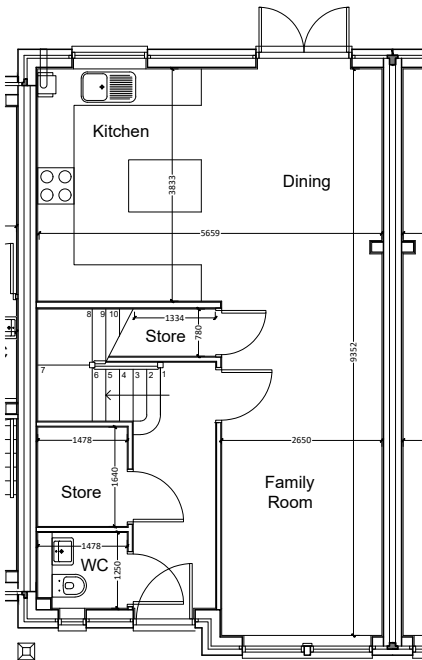
Plot 26 - Second Floor Plan

## Plot 26

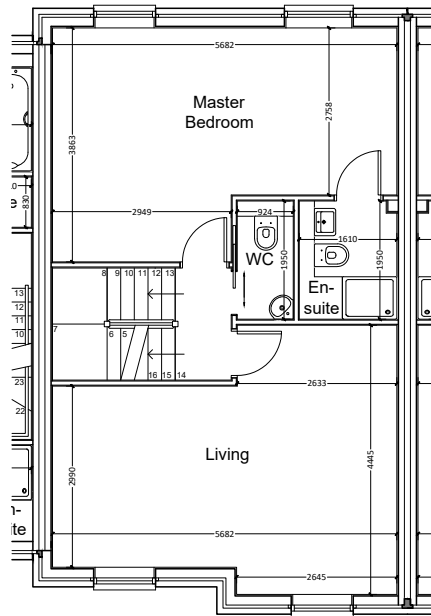
## 4 Bedroom Mid Terrace

4 Bedroom, 3 Storey Dwelling

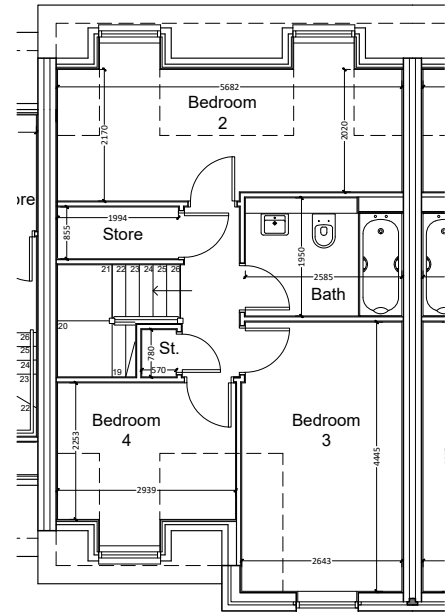
**Approximately 150 m<sup>2</sup> / 1,615 ft<sup>2</sup>**  
(Gross Internal Area)



Plot 27 - Ground Floor Plan



Plot 27 - First Floor Plan



Plot 27 - Second Floor Plan

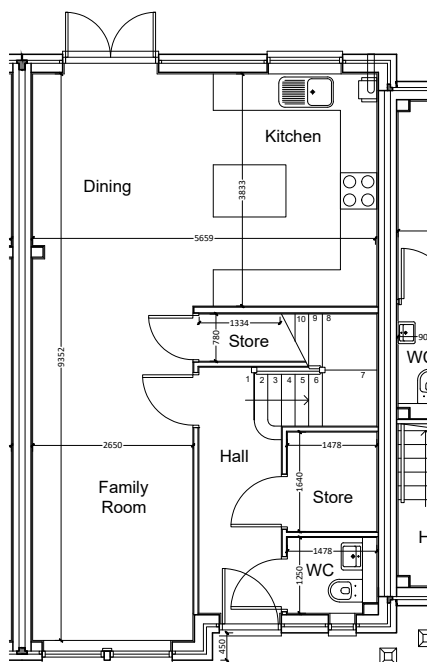
## Plot 27

## 4 Bedroom Mid Terrace

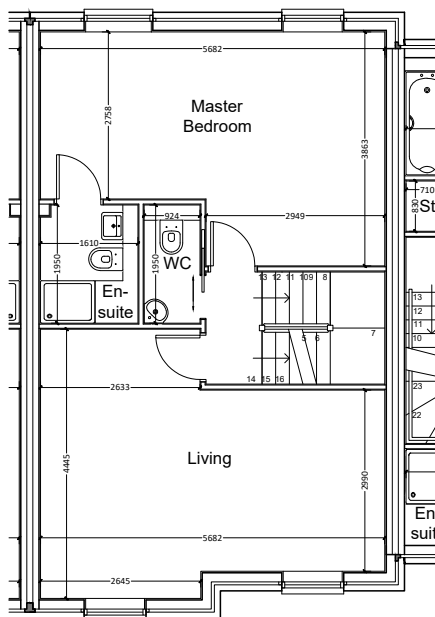
4 Bedroom, 3 Storey Dwelling

**Approximately 150 m<sup>2</sup> / 1,615 ft<sup>2</sup>**

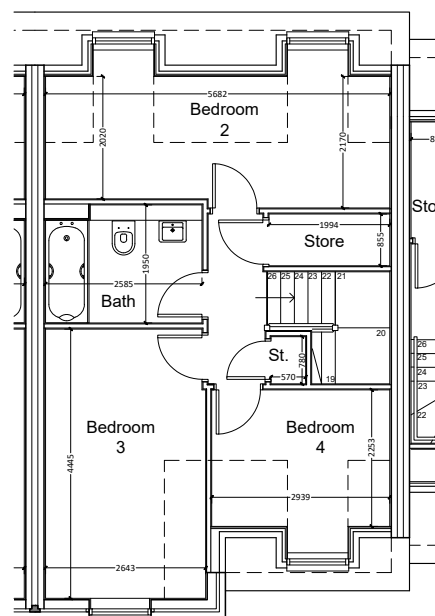
(Gross Internal Area)



Plot 28 - Ground Floor Plan



Plot 28 - First Floor Plan



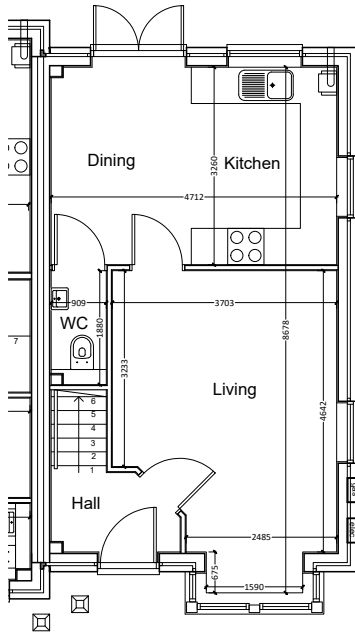
Plot 28 - Second Floor Plan

## Plot 28

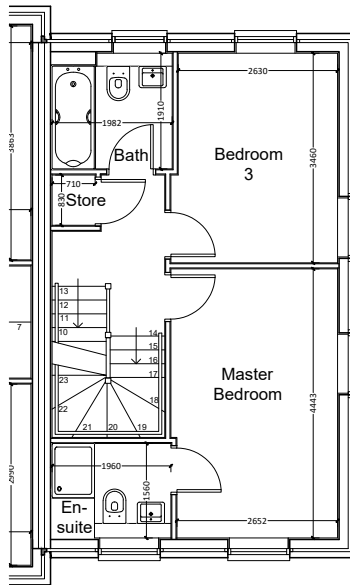
## 3 Bedroom End Terrace

3 Bedroom, 3 Storey Dwelling

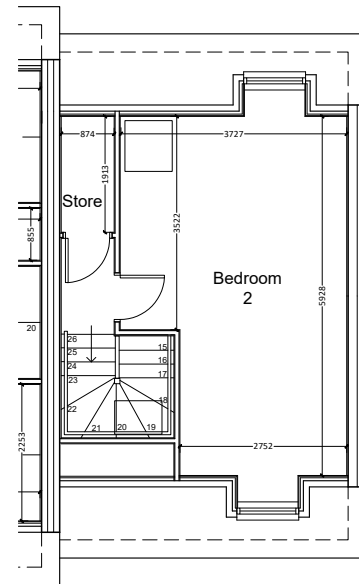
**Approximately 104 m<sup>2</sup> / 1,119 ft<sup>2</sup>**  
(Gross Internal Area)



Plot 29 - Ground Floor Plan



Plot 29 - First Floor Plan



Plot 29 - Second Floor Plan

## Plot 29



 0161 218 1303  sales@viaducthousing.com

**CONSUMER  
CODE FOR  
HOME BUILDERS**

[www.consumercode.co.uk](http://www.consumercode.co.uk)

Protection for new-build home buyers



**GMCA** GREATER  
MANCHESTER  
COMBINED  
AUTHORITY

POWERED BY  
**LEVELLING  
UP**



  
**Homes  
England**

Viaduct Partnerships Ltd is a wholly owned of Stockport Homes and part of SHG.

Registered in England and Wales No: 10330045

Registered Office: Stockport Homes Group, Cornerstone, 2 Edward Street, Stockport SK1 3NQ