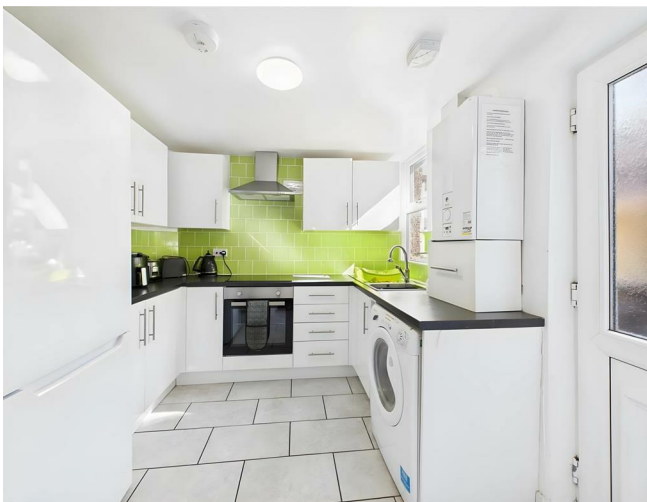


47 Portland Street, Lancaster, LA1 1SY



£259,950

A beautifully presented and deceptively spacious mid-terrace home, full of charm and character. This stylish property features two generously sized bedrooms, two welcoming reception rooms, and a sleek, well-equipped kitchen—perfect for modern living.

A real bonus is the versatile basement space, ideal for a home office, gym, or cosy snug, offering that much-needed flexibility for today's lifestyles.

The property currently benefits from two contemporary shower rooms, which could easily be reconfigured into a luxurious family bathroom if preferred. Comfort is assured with gas central heating controlled via Hive, double glazing throughout, and an efficient ventilation system.

Outside, the attractive, low-maintenance yard provides a lovely space to relax or entertain, and convenient on-road permit parking is available. Set in a desirable location, this is a fantastic opportunity to own a home that blends style, comfort, and practicality.

Experience urban living at its best with this property, conveniently located within walking distance of Lancaster's bustling city centre. Nature lovers will appreciate easy access to serene canal-side walks and the Fauna Nature Reserve, just minutes away.

Lancaster train station is a mere 5-minute walk, offering direct connections to London in just over two hours. Families will be delighted with the local educational options, as the property lies within the catchment area of top-rated schools, including Dallas Road

Primary School and both Lancaster Boys' and Girls' Grammar Schools. No Onward Chain.

Entrance Hallway

Stairs to the first floor, laminate floor, radiator.

Lounge



This was used as a bedroom before with a double glazed window to the front, radiator and carpeted floor.

Dining Room



Double glazed window to the rear, carpeted floor, radiator.

Kitchen



Double-glazed window to the rear, range of matching cabinets finished in a high white, four plates electric

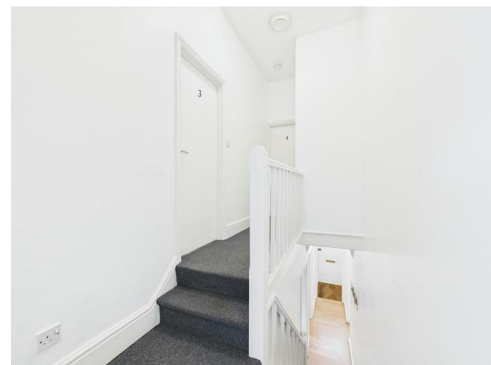
hob and oven, extractor hood, stainless steel sink, plumbing for washing machine, combi boiler, door to the yard, tiled floor, radiator, door to the lower basement.

Lower Basement



Double glazed window to the rear, carpeted floor, radiator, cupboard housing the gas meter and consumer unit..

First Floor Landing



Access to the loft, walk in storage cupboard.

Shower Room (1)



Double glazed frosted window to the rear, shower cubicle with thermostatic shower, heated towel rail, wash hand basin, vinyl floor, extractor fan, W.C.

Shower Room (2)



Double glazed Velux window, shower cubicle with thermostatic shower, heated towel rail, wash hand basin, vinyl floor, extractor fan, W.C.

Bedroom One



Double-glazed window to the rear, carpeted floor, radiator.

Bedroom Two



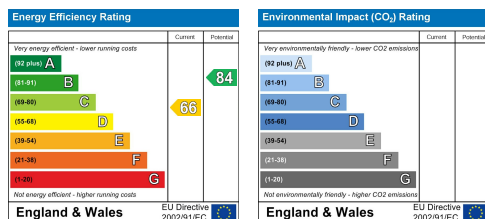
Double-glazed window to the front, carpeted floor, radiator.

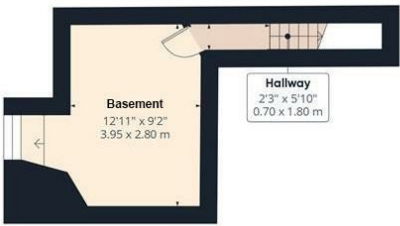
Useful Information

Tenure Freehold

Council Tax Band (B) £1,841.18

No Onward Chain





Floor -1



Ground Floor



Floor 1

Approximate total area⁽¹⁾
922.46 ft²
85.7 m²

(1) Excluding balconies and terraces

While every attempt has been made to ensure accuracy, all measurements are approximate, not to scale. This floor plan is for illustrative purposes only.

Calculations are based on RICS IPMS 3C standard.

GIRAFFE360



Head Office: 83 Bowerham Road Lancaster LA1 4AQ
T 01524 548888 E enquiries@mightyhouse.co.uk W www.mightyhouse.co.uk



Mighty House is a trading name of P&PC Surveyors Limited. Registered Office: 70 Daisy Hill, Dewsbury, WF13 1LS. Company no: 06498054