



# 122 DICKENSON ROAD MANCHESTER

**£140 Per Week**

Student Accommodation Available 1st July 2026 £140ppw (£145pw attic room)\*

Don't miss the opportunity to view this popular, huge semi-detached eight bedroom house! This property has eight double bedrooms over four floors, two kitchens, two bathrooms and two shower rooms for tenants to share, as well as an additional WC. There is also a large communal living room for tenants to relax in and a massive rear garden. Tenants also have the added bonus of off road parking which can fit two cars.

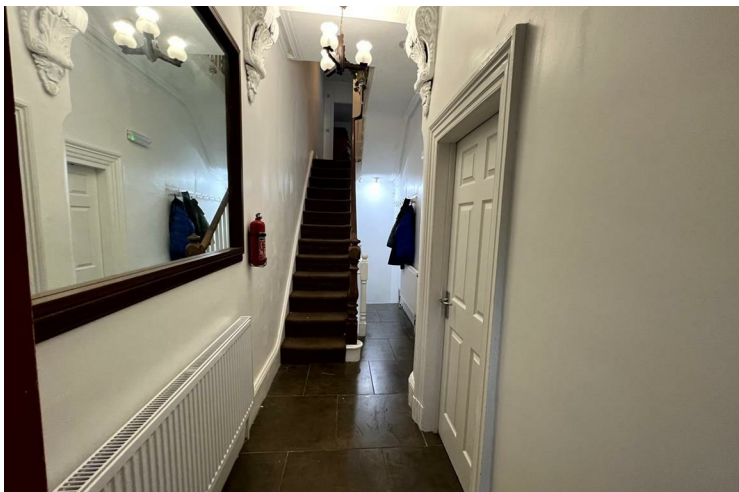
Property Reference: P1122

\*Bills Paid Ltd manage the utilities at the property, their Inclusive Bills Package covers: gas, electric, broadband, water and a TV Licence, for an additional £26ppw (terms and conditions apply).

- 12 month tenancy
- Deposit equivalent to 5x weekly rent
- Holding deposit equivalent to 1x weeks rent due to secure the property, this goes towards the total deposit due
- Rent and utilities calculated per calendar month (not four weeks basis)

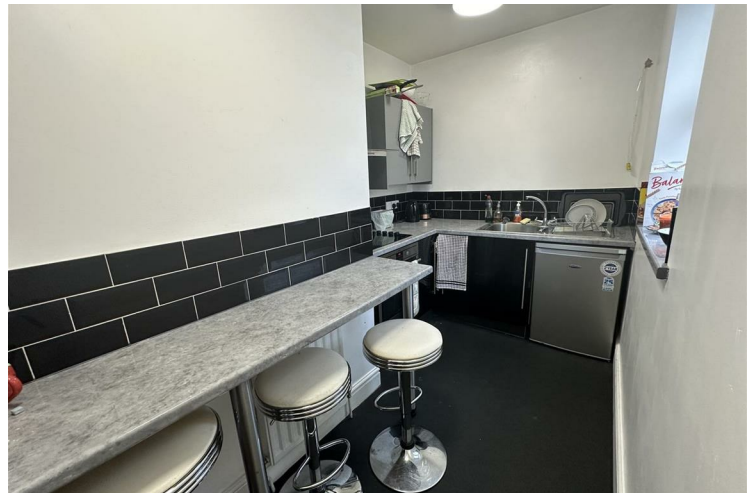
Don't miss out, contact the office and quote the property reference above to book your viewing today!

Disclaimer: These particulars are believed to be accurate but they are not guaranteed and do not form a contract. Any images, videos and/or floorplans on this brochure are for guidance purposes only and are not necessarily to scale.






- 8 Bedrooms • House • Rusholme • Fully furnished • 4 Bathrooms/shower rooms • Inclusive Bills £26pppw • Large garden • TV Included







Energy Efficiency Rating		
	Current	Potential
<i>Very energy efficient - lower running costs</i>		
(92 plus) <b>A</b>		
(81-91) <b>B</b>		
(69-80) <b>C</b>		
(55-68) <b>D</b>	55	64
(39-54) <b>E</b>		
(21-38) <b>F</b>		
(1-20) <b>G</b>		
<i>Not energy efficient - higher running costs</i>		
<b>England &amp; Wales</b> <small>EU Directive 2002/91/EC</small> 		

**EPC Rating: D      Council Tax Band: C**

Agents Note: Whilst every care has been taken to prepare these particulars, they are for guidance purposes only. All measurements are approximate and are for general guidance purposes only and whilst every care has been taken to ensure their accuracy, they should not be relied upon and potential buyers/tenants are advised to recheck the measurements

Drake & Co  
Anson Parade  
161a Dickenson Road  
Rusholme  
Manchester  
M14 5HZ

0161 224 2134  
info@drakes.co.uk  
<https://www.drakes.co.uk/>

