



drake & co
ESTATE AGENTS



2 HARLEY AVENUE MANCHESTER

£140 Per Week

Student Accommodation Available 1st July 2026 £140pppw (£150pppw ensuite rooms)*

This impressive garden bay semi-detached property has been refurbished, giving it a fresh and welcoming appeal. There are six double bedrooms over two storeys, four of which have recently renovated ensuite shower rooms! There is also a master bathroom for tenants to share, along with an open plan dining kitchen and lounge which tenants can relax in and a decking area at the rear.

Property Reference: P1620

*Bills Paid Ltd manage the utilities at the property, their Inclusive Bills Package covers: gas, electric, broadband, water and a TV Licence, for an additional £26pppw (terms and conditions apply).

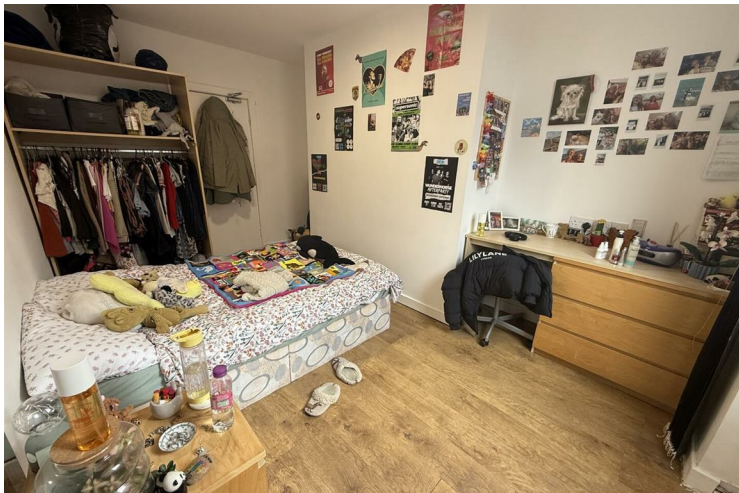
- 12 month tenancy
- Deposit equivalent to 5x weekly rent
- Holding deposit equivalent to 1x weeks rent due to secure the property, this goes towards the total deposit due
- Rent and utilities calculated per calendar month (not four weeks basis)

Don't miss out, contact the office and quote the property reference above to book your viewing today!

Disclaimer: These particulars are believed to be accurate but they are not guaranteed and do not form a contract. Any images, videos and/or floorplans on this brochure are for guidance purposes only and are not necessarily to scale.



- 6 Bedrooms • House • Victoria Park • Fully furnished • 5 Shower rooms • Inclusive Bills
- £26pppw • TV Included • Large garden







Energy Efficiency Rating		
	Current	Potential
Very energy efficient - lower running costs		
(92 plus) A		
(81-91) B		82
(69-80) C		
(55-68) D		
(39-54) E	53	
(21-38) F		
(1-20) G		
Not energy efficient - higher running costs		
England & Wales <small>EU Directive 2002/91/EC</small>		

EPC Rating: E Council Tax Band: B

Agents Note: Whilst every care has been taken to prepare these particulars, they are for guidance purposes only. All measurements are approximate and are for general guidance purposes only and whilst every care has been taken to ensure their accuracy, they should not be relied upon and potential buyers/tenants are advised to recheck the measurements

Drake & Co
 Anson Parade
 161a Dickenson Road
 Rusholme
 Manchester
 M14 5HZ

0161 224 2134
info@drakes.co.uk
<https://www.drakes.co.uk/>

