



# 47 SCARSDALE ROAD MANCHESTER

£135 Per Week

Student Accommodation Available 1st July 2026 £140ppw\*

This property has been recently redecorated to a high standard and includes modern furniture throughout. There are six double bedrooms, a large open plan kitchen living area for tenants to relax in and two shower rooms which have been refurbished to make them modern and stylish. Situated in a prime location, tenants can easily travel to the universities in Manchester, as well as the City Centre via public transport or walking.

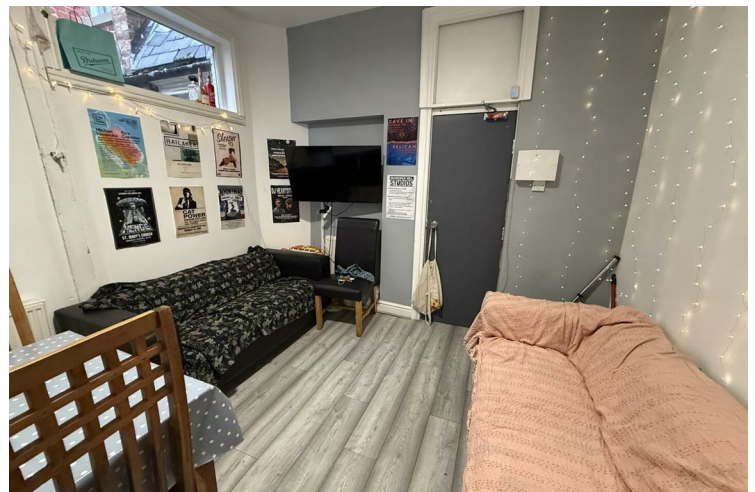
Property Reference: P1618

\*Bills Paid Ltd manage the utilities at the property, their Inclusive Bills Package covers: gas, electric, broadband, water and a TV Licence, for an additional £26ppw (terms and conditions apply).

- 12 month tenancy
- Deposit equivalent to 5x weekly rent
- Holding deposit equivalent to 1x weeks rent due to secure the property, this goes towards the total deposit due
- Rent and utilities calculated per calendar month (not four weeks basis)

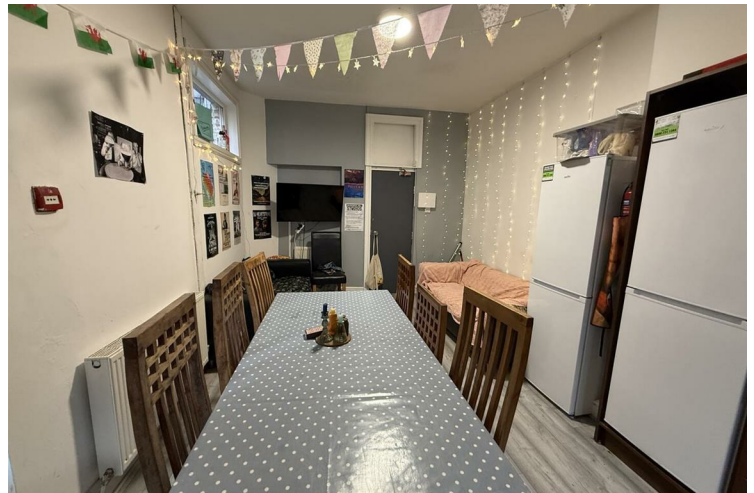
Don't miss out, contact the office and quote the property reference above to book your viewing today!

Disclaimer: These particulars are believed to be accurate but they are not guaranteed and do not form a contract. Any images, videos and/or floorplans on this brochure are for guidance purposes only and are not necessarily to scale.

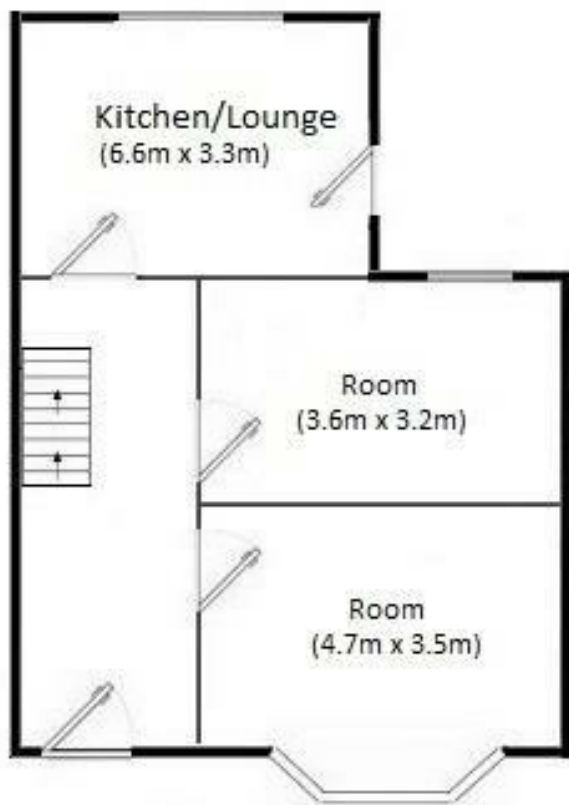




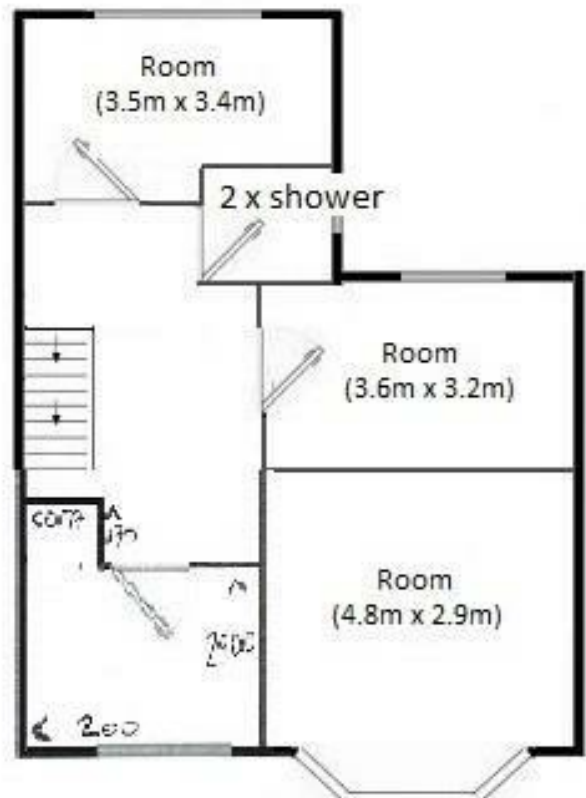
- 6 Bedrooms • House • Victoria Park • Fully furnished • 2 Bathrooms/shower rooms • Street parking available • Inclusive Bills £26pppw







Ground Floor



First Floor



Energy Efficiency Rating		
	Current	Potential
Very energy efficient - lower running costs		
(92 plus) <b>A</b>		
(81-91) <b>B</b>		<b>84</b>
(69-80) <b>C</b>		
(55-68) <b>D</b>	<b>68</b>	
(39-54) <b>E</b>		
(21-38) <b>F</b>		
(1-20) <b>G</b>		
Not energy efficient - higher running costs		
England & Wales		
EU Directive 2002/91/EC		

**EPC Rating: D      Council Tax Band: B**

Agents Note: Whilst every care has been taken to prepare these particulars, they are for guidance purposes only. All measurements are approximate and are for general guidance purposes only and whilst every care has been taken to ensure their accuracy, they should not be relied upon and potential buyers/tenants are advised to recheck the measurements

Drake & Co  
Anson Parade  
161a Dickenson Road  
Rusholme  
Manchester  
M14 5HZ

0161 224 2134  
info@drakes.co.uk  
<https://www.drakes.co.uk/>

