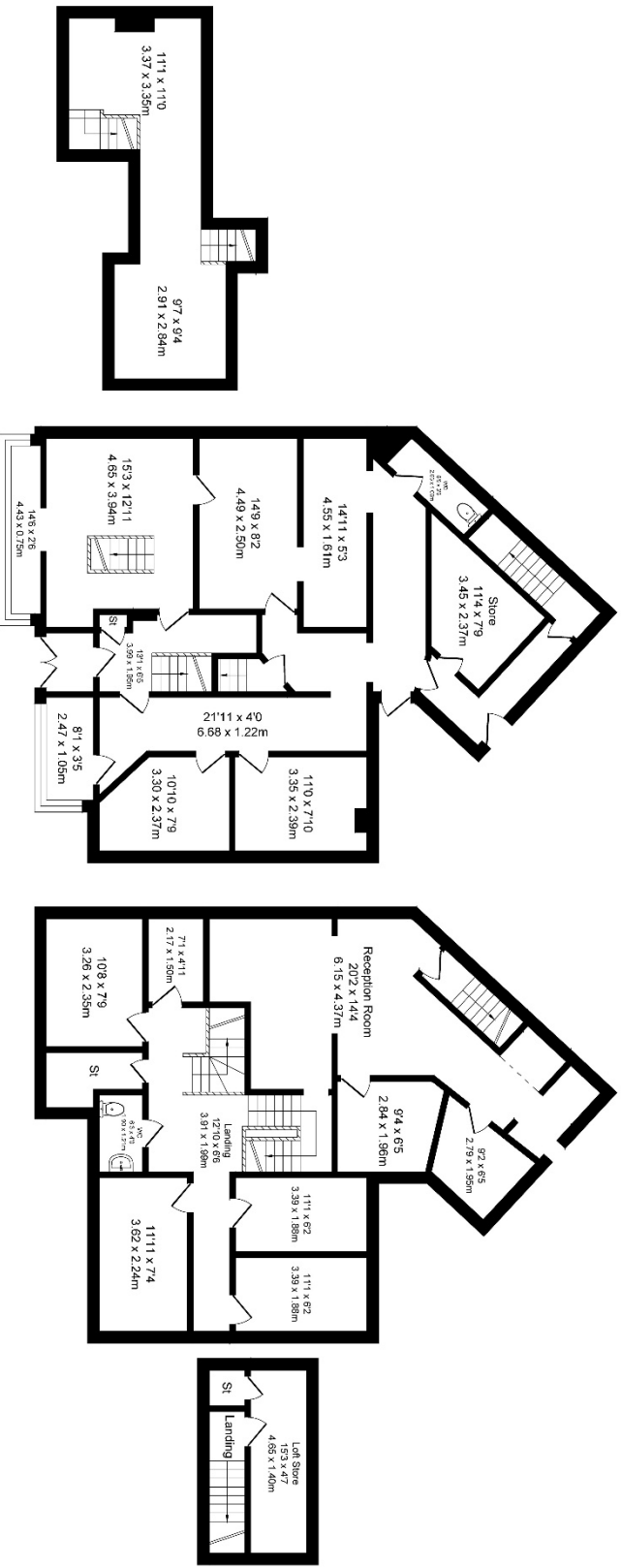


Bewseye road, Warrington

Total Approx. Floor Area 2766 Sq.ft. (257.0 Sq.M.)

Surveyed and drawn by Lens Media for illustrative purposes only. Not to scale. Whilst every attempt was made to ensure the accuracy of the floor plan, all measurements are approximate and no responsibility is taken for any error.



Basement  
Approx. Floor  
Area 271 Sq.Ft  
(25.2 Sq.M.)

Ground Floor  
Approx. Floor  
Area 1241 Sq.Ft  
(115.3 Sq.M.)

First Floor  
Approx. Floor  
Area 1131 Sq.Ft  
(105.1 Sq.M.)

Loft  
Approx. Floor  
Area 123 Sq.Ft  
(11.4 Sq.M.)