



**Thursby House, Croft Business Park, 1 Thursby Road,  
Bromborough, Wirral, CH62 3PW**

First Floor Serviced Office

**Summary**

<b>Tenure</b>	To Let
<b>Available Size</b>	250 to 1,500 sq ft / 23.23 to 139.35 sq m
<b>Business Rates</b>	Upon Enquiry
<b>EPC Rating</b>	Upon enquiry

**Key Points**

- Situated Off The A41 in Bromborough
- Popular Location with Easy Access to Retail and Leisure Facilities.
- Serviced and Professionally Managed Executive Office Suites.

## Summary

<b>Available Size</b>	250 to 1,500 sq ft
<b>Business Rates</b>	Upon Enquiry
<b>EPC Rating</b>	Upon enquiry

## Description

Thursby House is a modern office building with 20 serviced and professionally managed executive office suites, ranging from 100ft to 1500 ft.

The Business Centre hosts an impressive central reception area, meeting rooms, a private lounge and the latest telecoms and internet technology. Secure parking for both you and your visitors is also included in the package.

You can move in immediately with office furniture, receptionist, mail handling and telephone message all provided in our fully inclusive price. The offices are decorated, carpeted and furnished to an extremely high standard providing a professional, modern and secure working environment for you and your business.

UBCUK Ltd's professional and friendly team are far more than just your office supplier. We are a true extension to your business - meeting and greeting your visitors, managing your calls and providing a range of administrative support services when you need them.

Prospective occupiers can choose between self-contained suites, smaller fully serviced offices or a workstation in a shared office.

Location Positioned alongside the the popular Croft Retail & Leisure Park off the A41 in Bromborough, UBC's Thursby House is a popular business centre with outstanding facilities.

In addition to the benefits of working in a UBC facility, being a five minute walk from the retail and leisure park, the location of Thursby House is also particularly appealing to staff.

## Location

Positioned alongside the the popular Croft Retail & Leisure Park off the A41 in Bromborough, UBC's Thursby House is a popular business centre with outstanding facilities.

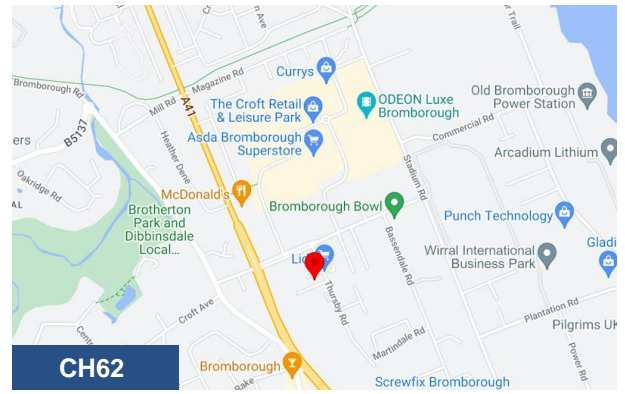
In addition to the benefits of working in a UBC facility, being a five minute walk from the retail and leisure park, the location of Thursby House is also particularly appealing to staff.

## Services

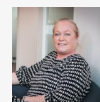
Broadband and telecoms managed on your behalf.  
Mail handling and additional administration services.  
Fax, photocopier and scanning facilities.  
24 hour access and on site CCTV.

## Rates

Rates to be confirmed dependent on size of space required.



## Viewing & Further Information



**Helen Quarmby**

01925 414909

hquarmby@morganwilliams.com



**Emma Bates**

01925 414909 | 07515723589

ebates@morganwilliams.com

The above information contained within this email is sent subject to contract. These particulars are for general information only and do not constitute any part of an offer or contract. All statements contained therein are made without responsibility on the part of the vendors or lessors and are not to be relied upon as statement or representation of fact. Intending purchasers or lessees must satisfy themselves by inspection, or otherwise, as to the correctness of each of the statements of dimensions contained in these particulars. Generated on 13/06/2024

