



Apartment

GOLDSTONE ROAD, HOVE

PCM

£1,100

FEATURES

- Council Tax Band A
- Residents Parking Zone N
- Unfurnished



HOME JAMES
LETTINGS & MANAGEMENT

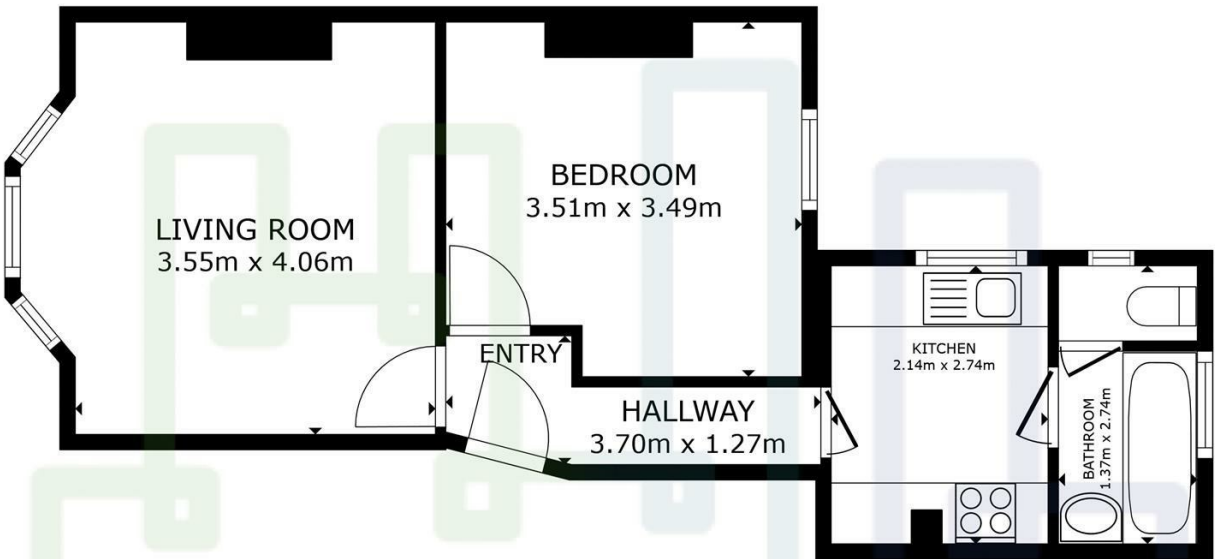
1 Bedroom Apartment located in Hove

Redecorated & New Carpets | Raised Ground Floor Apartment | One Double Bedroom | Modern Kitchen with Appliances | White Bathroom Suite | Good Size Front Sitting Room | Central Hove Location | Close to Train Station

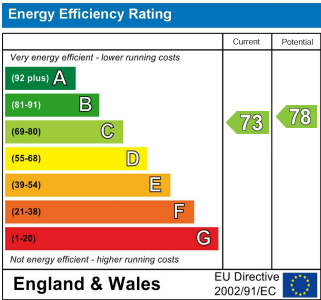
Call us on
01273 952280

info@homejameslets.co.uk
www.homejameslets.co.uk

Council Tax Band
A



GROSS INTERNAL AREA
FLOOR PLAN 41.4 m²
TOTAL : 41.4 m²
SIZES AND DIMENSIONS ARE APPROXIMATE, ACTUAL MAY VARY.



Agents Note: Whilst every care has been taken to prepare these particulars, they are for guidance purposes only. All measurements are approximate and are for general guidance purposes only and whilst every care has been taken to ensure their accuracy, they should not be relied upon and potential buyers are advised to recheck the measurements.