



Fairfax Avenue, Selby, YO8 4AZ

In Excess of **£200,000**



Fairfax Avenue

- Three Bedroomed End Terraced House
- West Facing Rear Garden
- 95 Sq M / 1022 Sq. Ft.
- Mains Electricity. Mains Gas Central Heating.
- Mains Water Supply. Mains Sewerage
- Broadband: FTTC. Mobile: 4G
- Brick Built Construction
- FREEHOLD
- EPC Rating 'D'
- Council Tax Band 'B'



Welcome to this charming three bedroom end of terrace home that's got a lot to offer! As you step inside, you'll find a cosy living room perfect for relaxing after a long day. The adjacent dining kitchen is spacious and well-equipped, ideal for whipping up your favourite meals. Upstairs, you'll discover three bright and airy bedrooms and a family bathroom.

Situated in a popular residential neighbourhood, this two-story end terraced house boasts a west-facing rear garden, allowing you to soak up the sun and enjoy some outdoor serenity. With a generous 95 square metres of living space, there's plenty of room for you to make this place your own.

Stay connected with high-speed broadband thanks to the FTTC connection, while enjoying reliable mobile coverage with 4G support. The brick-built construction ensures durability and stability, giving you peace of mind for years to come.

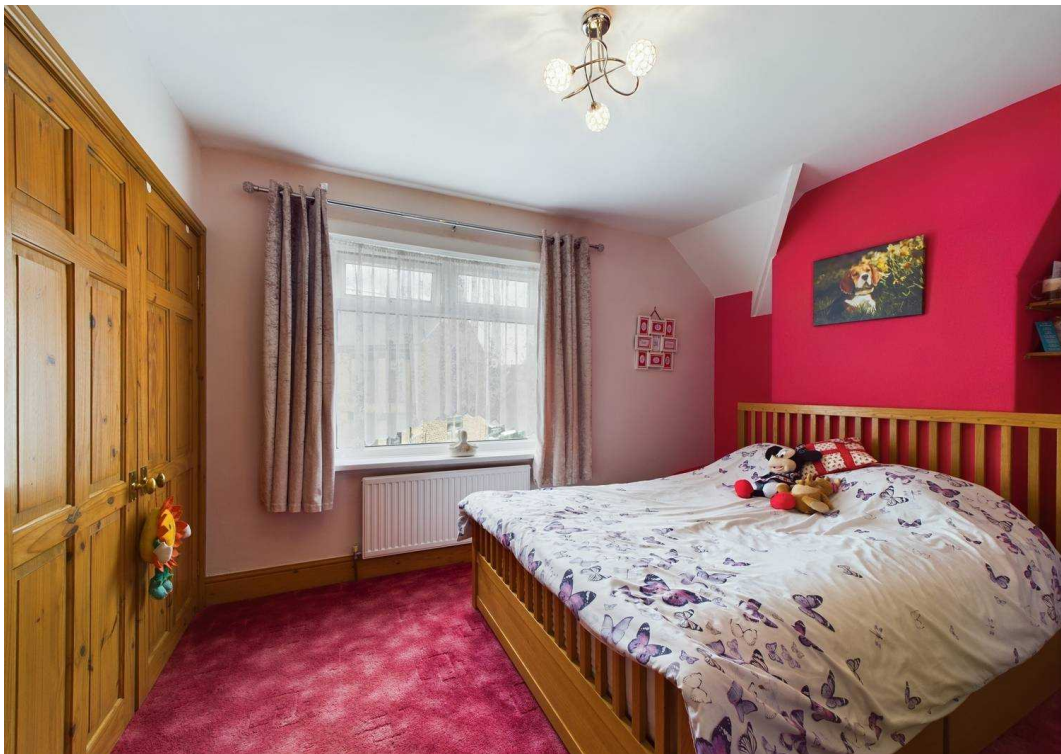
And here's the cherry on top – this property is offered on a freehold basis, giving you full ownership and control. With an EPC rating of 'D' and council tax band 'B', you can rest assured that this home is not only charming but also efficient and affordable.

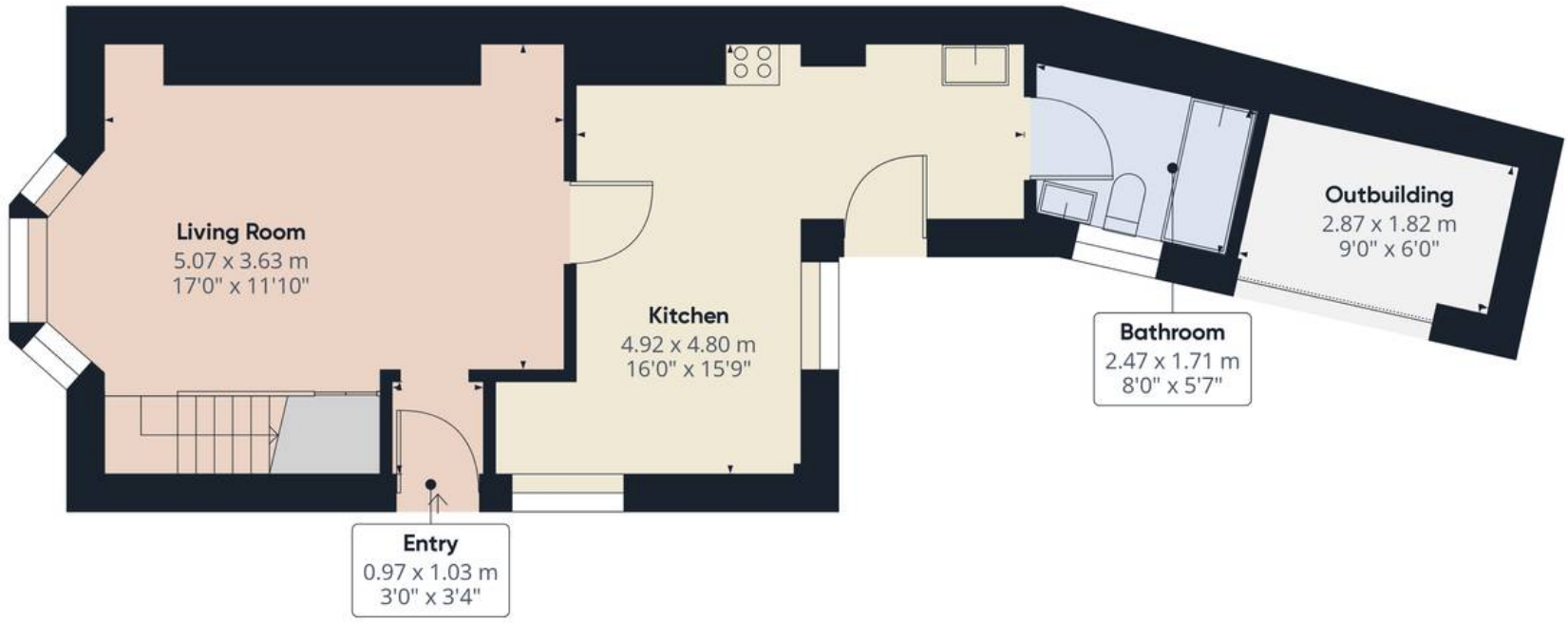
In summary, this delightful 3-bedroom end of terrace home offers a comfortable living space, convenient amenities all within walking distance, and a lovely garden to enjoy some outdoor time. Whether you're looking to relax indoors or unwind in the fresh air, this property has everything you need to create your perfect retreat.

Don't miss out on this wonderful opportunity to make this house your home sweet home!

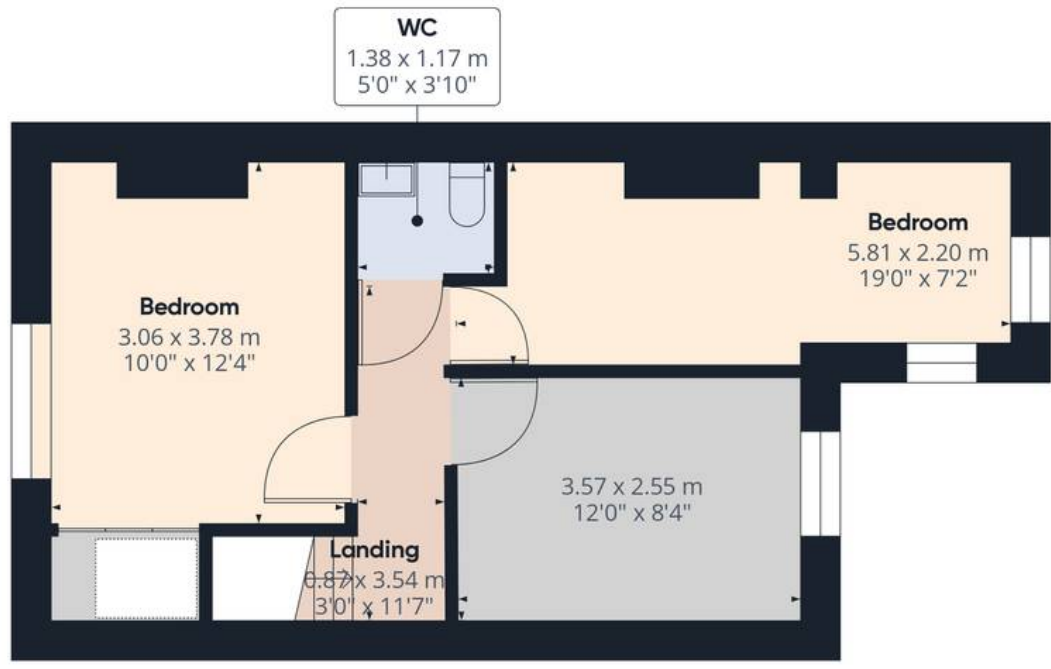
Just a little note: The rear garden backs onto the grounds of Selby High School.







Ground Floor



Floor 1

Approximate total area⁽¹⁾

87.59 m²

942.81 ft²

(1) Excluding balconies and terraces

While every attempt has been made to ensure accuracy, all measurements are approximate, not to scale. This floor plan is for illustrative purposes only.

GIRAFFE360



JP Harll

J P Harll Estate Agents, 24 Finkle Street - YO8 4DS

01757 709955 • sales@jpharll.co.uk • www.jpharll.co.uk/

