



Priors Grange , Salford Priors

Evesham, WR11 8XP

Jeremy
McGinn & Co 

Offers In The Region Of £475,000



An Executive, Detached modern family home situated at the top of a small Cul de Sac in a corner position, therefore having a larger than average Rear Garden to both rear and side, with open land/allotments behind the garden hedges and within a short walk to the local Primary School and village hall, Post office, convenience store and the village playing fields.

This very well presented family home provides bright and spacious accommodation to include a Reception Hall with Downstairs Cloakroom, a good size Living room with feature fireplace and double doors opening to the Dining room with french doors opening to the gardens. Doors from the hall and the dining room lead to the modern fitted Kitchen with fitted appliances and breakfast bar. A further door opens to a Utility room.

Upstairs, the Gallery Landing gives access to FOUR Double Bedrooms, two with fitted wardrobes and one with an En-suite. There is also a well fitted Family Bathroom.

To the front, a Driveway provides parking for two vehicles and leads to the DOUBLE GARAGE.

To the rear, the beautifully-maintained, landscaped Garden stretches from the rear around to the side. A mature hedges provides complete privacy and is edged with stunning, shaped flower borders filled with many beautiful garden plants and shrubs. There is a paved seating area, a small pond with water plants, and a greenhouse tucked away in a tidy



Offers In The Region Of £475,000

 4  2  2  C

corner. A double glazed hexagonal Summer House sits centrally in the garden providing a peaceful seating area in even the worst weather.



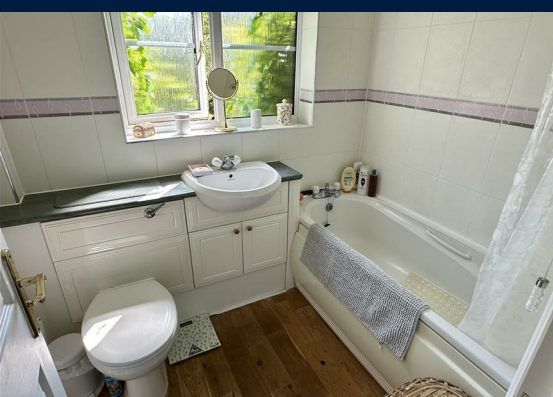


Tax Band: C

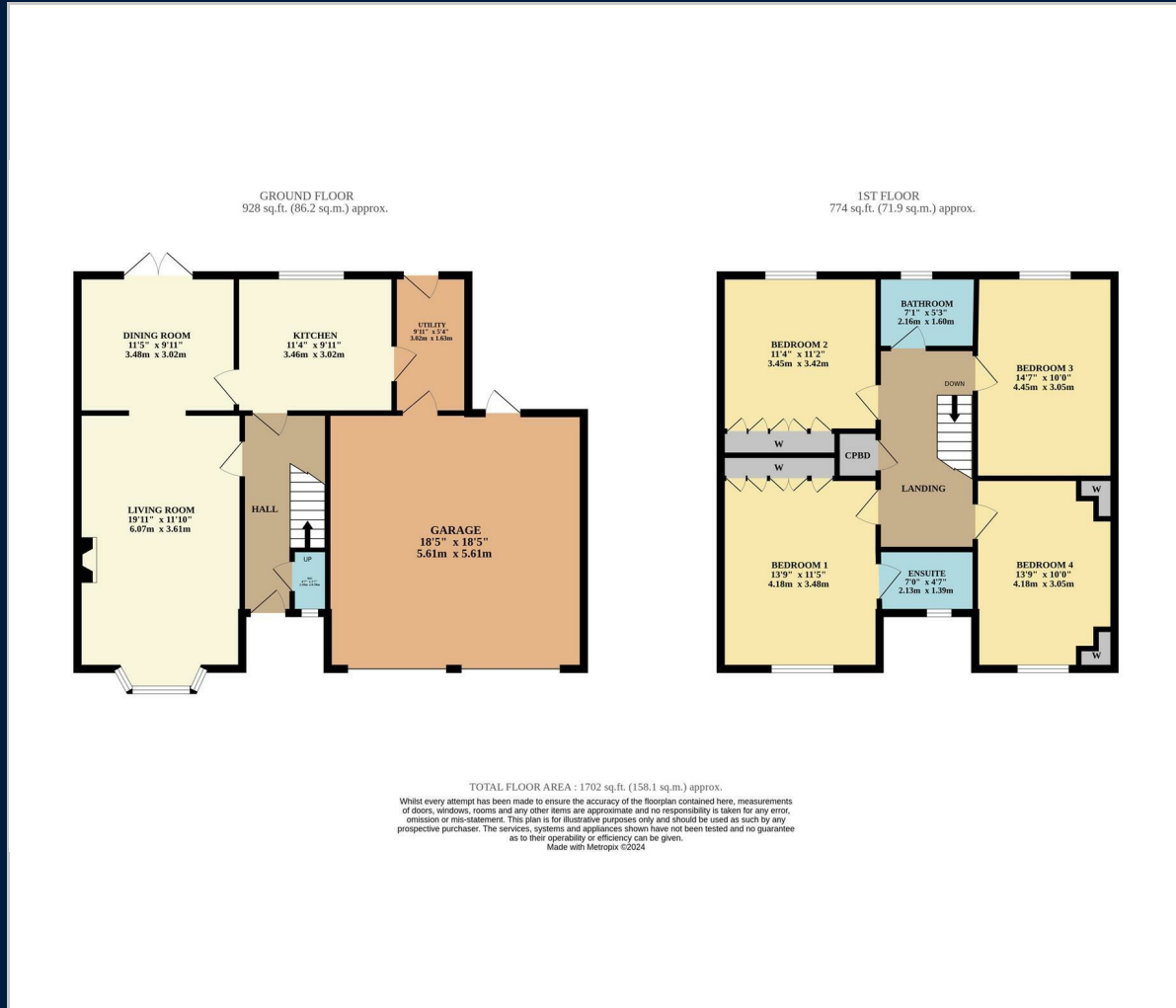
Council: Stratford

Tenure: Freehold

Salford Priors is a rural, agricultural village and civil parish about four miles south-west of Alcester and half a mile from Bidford on Avon in Warwickshire. The village is eight miles from the popular tourist town of Stratford upon Avon, the birthplace of William Shakespeare, and the River Avon runs near to it. Evesham lies seven miles to the south-west and is an important agricultural centre and soft fruit-growing area.



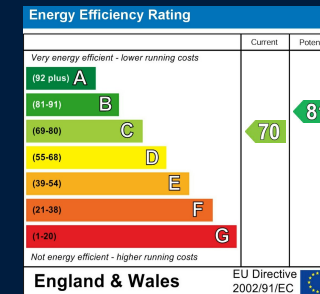
Floor Plan



Map



Energy Performance



These particulars, whilst believed to be accurate are set out as a general outline only for guidance and do not constitute any part of an offer or contract. Intending purchasers should not rely on them as statements of representation of fact, but must satisfy themselves by inspection or otherwise as to their accuracy. No person in this firm's employment has the authority to make or give any representation or warranty in respect of the property.

49A High Street, Alcester, Warwickshire, B49 5AF
 Tel: 01789 868587 Email: alcester@jeremymcginns.com www.jeremymcginns.com