



Oakhill Drive, Skelmersdale, WN8



£325,000

- Detached Family Home
- Sought After Residential Location
- Lounge & Kitchen/Diner
- Master Bedroom & En-Suite
- Beautifully Presented
- Landscaped Rear Garden
- Freehold
- EPC rating B



Beautifully Presented Four-Bedroom Detached Family Home. Modern Build in the Sought-After Location of Ashurst Skelmersdale.

This stunning four-bedroom detached property offers contemporary family living in a peaceful and highly desirable residential area. Built approximately 4-5 years ago, the home has been finished to an exceptional standard throughout, combining modern design with warm, welcoming touches.



The spacious ground floor features a bright and airy lounge with a large bay-style window, allowing natural light to flood the room. To the rear sits an impressive open-plan kitchen and dining space, perfect for everyday living and entertaining, with sleek fittings and direct access to the garden. A separate utility area and downstairs WC add further convenience.

Upstairs, the property offers four well-proportioned bedrooms, including a generous master bedroom with en-suite facilities. The remaining bedrooms provide flexible space ideal for family living, guests, or a home office. A stylish family bathroom completes the first-floor accommodation.

Externally, the property benefits from a good-sized rear garden, a driveway providing ample off-road parking, and a detached garage. With its modern build quality, tasteful interior finish, and excellent location close to local amenities, schools, and transport links, this home is ready to move straight into and enjoy.

Early viewing is highly recommended to appreciate everything this beautiful property has to offer.

Disclaimer

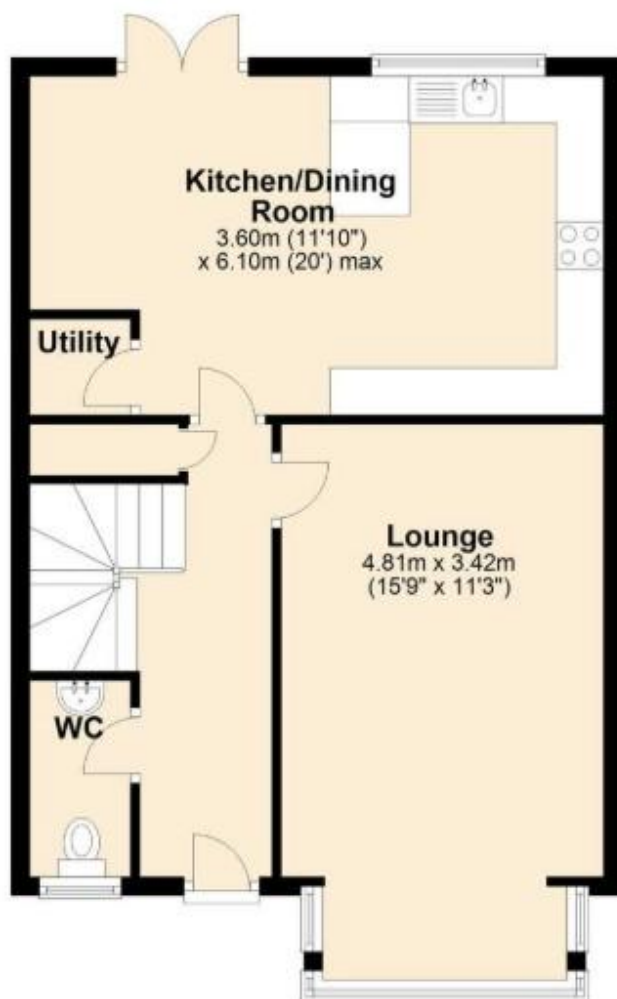
These details are intended to give a fair description only and their accuracy cannot be guaranteed nor are any floor plans (if included) exactly to scale. These details do not constitute part of any contract and are not to be relied upon as statements of representation or fact. Intended purchasers are advised to recheck all measurements before committing to any expense and to verify the legal title of the property from their legal representative. Any contents shown in the images contained within these particulars will not be included in the sale unless otherwise stated or following individual negotiations with the vendor. Northwood have not tested any apparatus, equipment, fixtures, or services so cannot confirm that they are in working order and the property is sold on this basis.





Ground Floor

Approx. 54.0 sq. metres (580.8 sq. feet)

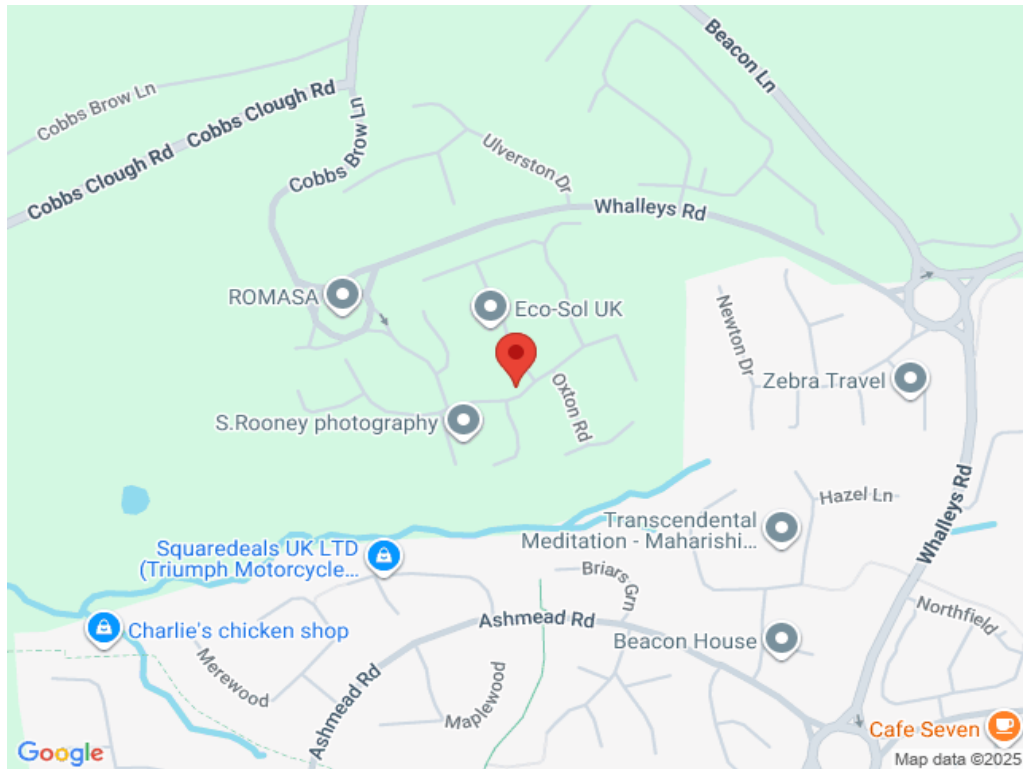


First Floor

Approx. 49.0 sq. metres (527.5 sq. feet)



Total area: approx. 103.0 sq. metres (1108.2 sq. feet)



Score	Energy rating	Current	Potential
92+	A		93 A
81-91	B	83 B	
69-80	C		
55-68	D		
39-54	E		
21-38	F		
1-20	G		



Northwood Southport and Ormskirk

01704 545 657

southport@northwooduk.com