



Shaftesbury Road, Birkdale, PR8



3



2



2

Offers in excess of £220,000

- Semi-Detached Property
- Beautifully Presented Throughout
- Spacious Open-Plan Family Room
- Driveway Parking
- Naturally Private Rear
- Sought After Birkdale Location
- Freehold
- EPC rating TBC



Beautifully Presented Three-Bedroom Semi-Detached Home with Spacious Family Kitchen/Diner

This attractive three-bedroom semi-detached property offers the perfect blend of traditional charm and modern family living. Ideally located in the popular and sought after residential area of Birkdale.

The property welcomes you with excellent kerb appeal, featuring a neatly maintained block-paved driveway and mature front garden. Inside, a bright bay-fronted living room provides a cosy space to relax, while to the rear, the home opens into a stunning open-plan kitchen, dining, and family area, the true heart of the home. This generously sized space is ideal for both everyday living and entertaining, with ample room for dining and seating areas overlooking the rear garden.



The ground floor also benefits from a modern family bathroom, thoughtfully designed and conveniently located for easy access. Upstairs, you'll find three well-proportioned bedrooms, including a spacious master bedroom complete with its own en-suite shower room, offering a touch of privacy and comfort.

Outside, the rear garden provides a lovely private area for outdoor dining, play, or gardening, with side access from the driveway for added convenience.

Perfectly positioned close to local amenities, schools, and transport links, this home is ready to move straight into and enjoy.

Additional Information

The property benefits from solar panels which contributes to the property's electricity and any excess energy generated is fed back to the grid. The loft has been fully boarded and plastered and benefits from a Velux window.

Disclaimer

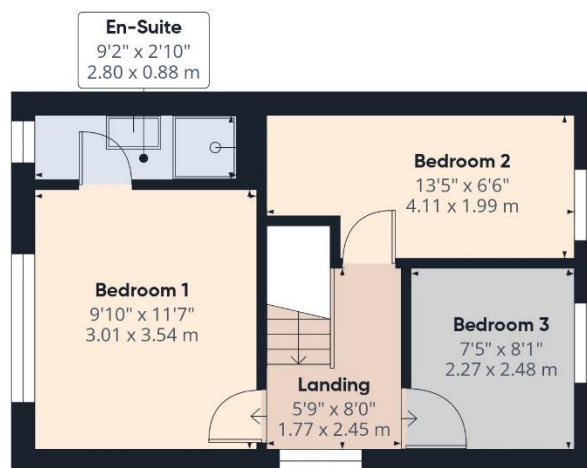
These details are intended to give a fair description only and their accuracy cannot be guaranteed nor are any floor plans (if included) exactly to scale. These details do not constitute part of any contract and are not to be relied upon as statements of representation or fact. Intended purchasers are advised to recheck all measurements before committing to any expense and to verify the legal title of the property from their legal representative. Any contents shown in the images contained within these particulars will not be included in the sale unless otherwise stated or following individual negotiations with the vendor. Northwood have not tested any apparatus, equipment, fixtures, or services so cannot confirm that they are in working order and the property is sold on this basis.



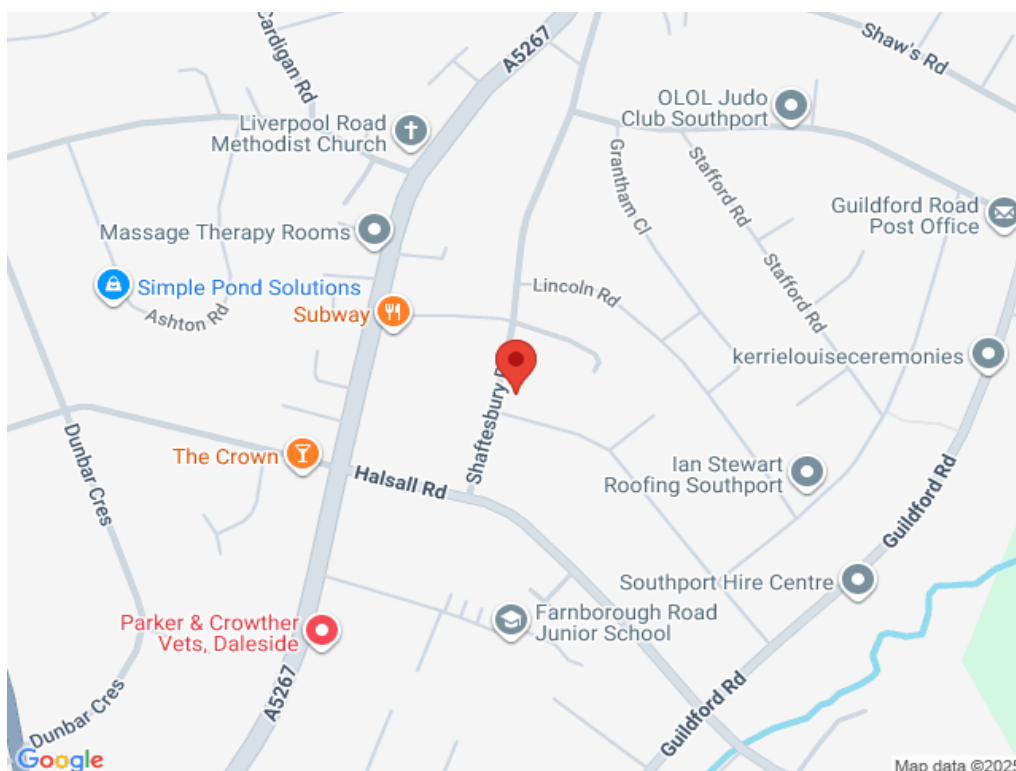




Floor 0



Floor 1



Northwood Southport and Ormskirk

01704 545 657

southport@northwooduk.com