



Meadow Road

Watford, WD25 0HZ

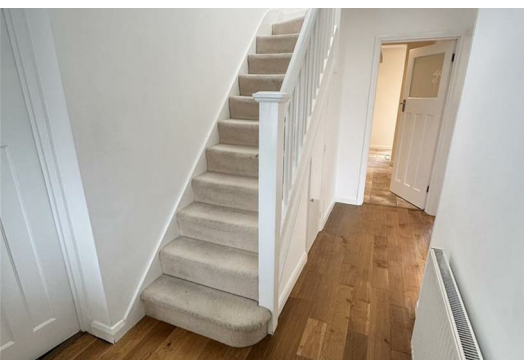
£550,000



Perfectly suited for family living, this well-presented and extended three-bedroom semi-detached home is located in the popular and family-friendly area of Kingswood in Garston.

The property offers generous and practical living space, including a large through lounge with a cozy gas fireplace – perfect for family evenings – and a modern open-plan kitchen/diner that's ideal for mealtimes and entertaining. There's also a handy laundry room, three comfortable bedrooms, and two bathrooms to meet the needs of a busy household.

Families will love the convenience of off-street parking, private garden with side access to a secure garage, and easy access to nearby parks, reputable schools, local shops, and reliable bus routes. For commuting parents, the home is superbly located with quick access to the M1, M25, A41, and A405.





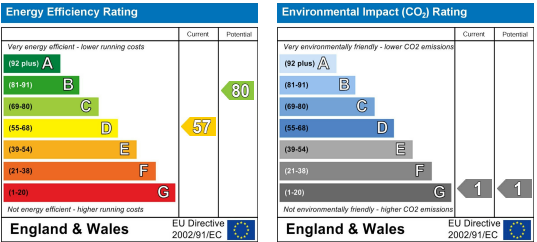
Area Map



Floor Plans



Energy Efficiency Graph



These particulars, whilst believed to be accurate are set out as a general outline only for guidance and do not constitute any part of an offer or contract. Intending purchasers should not rely on them as statements of representation of fact, but must satisfy themselves by inspection or otherwise as to their accuracy. No person in this firms employment has the authority to make or give any representation or warranty in respect of the property.