



## Rickmansworth Road

Watford, WD18 7BY

**£325,000**



A well presented two-bedroom, two-bathroom apartment. Fantastically located on Rickmansworth Road, Watford, with fabulous views over Cassiobury Park. Situated on the first floor in a modern building, with entry phone facility, this property offers a bright and spacious living space.

The property comprises of an open plan kitchen/ reception room. With room for a dining table. Two Double bedrooms, en-suite to master, a family bathroom, entry hall with airing cupboard and storage cupboard.

There is one private allocated parking space, two visitors spaces and a cycle store.

This home is in very close proximity to Cassiobury Park and a leisurely stroll into Watford Town Centre. It is easy walking distance to both Watford Junction and Watford Metropolitan train stations, great for the commuter.

No Onward Chain.

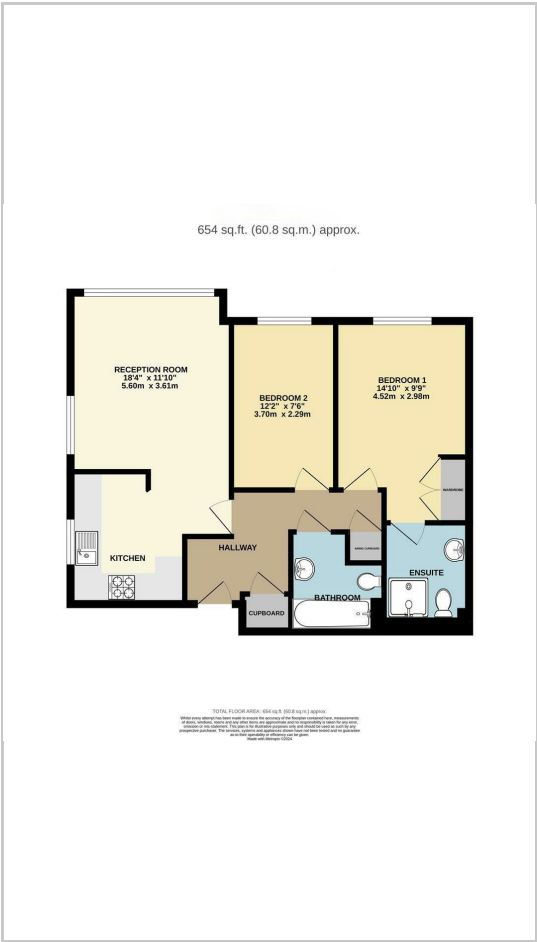




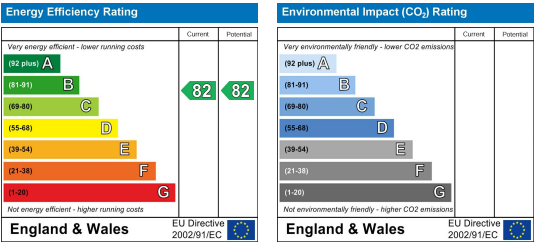
Area Map



Floor Plans



Energy Efficiency Graph



These particulars, whilst believed to be accurate are set out as a general outline only for guidance and do not constitute any part of an offer or contract. Intending purchasers should not rely on them as statements of representation of fact, but must satisfy themselves by inspection or otherwise as to their accuracy. No person in this firms employment has the authority to make or give any representation or warranty in respect of the property.