



Langbourne Place

London, E14 3WN

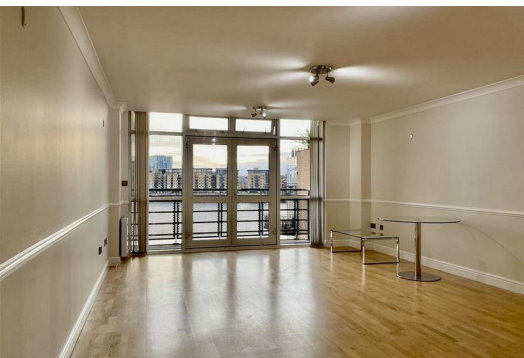
£2,500 Per Month



Well Presented Two double bedroom apartment located on the 3rd floor in a private gated development at Langbourne Place, London.

The property comprises entrance hall, open plan kitchen/ living area with view overlooking The River Thames, fitted kitchen with integral appliances, master bedroom with en-suite and private balcony, second double bedroom and a modern fitted bathroom.

The property benefits secure underground parking, concierge service, located close distance to Island Gardens DLR and Greenwich foot tunnel. Available Now.

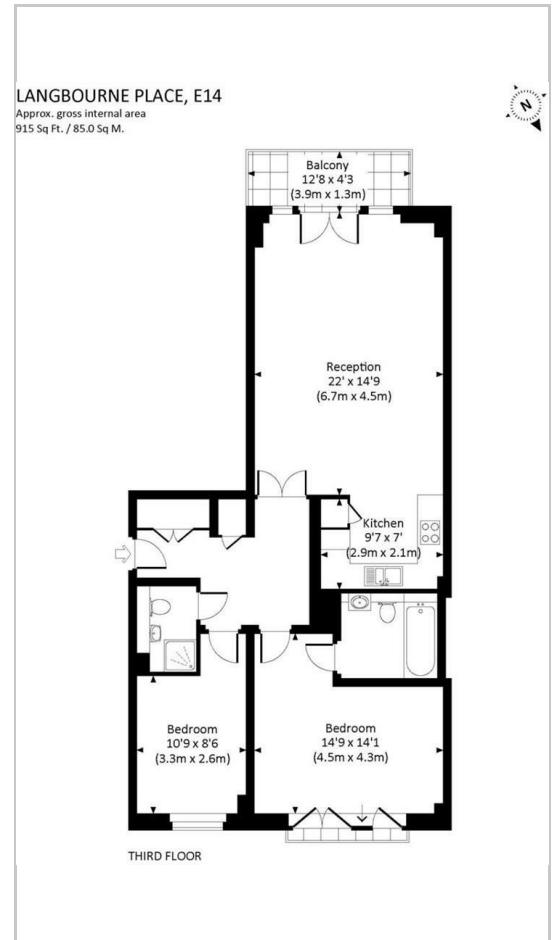




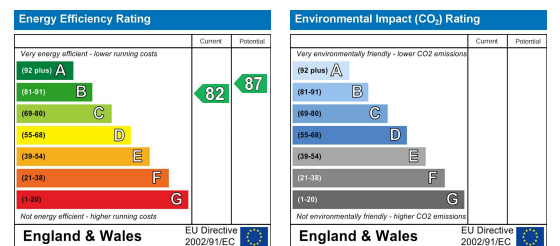
Area Map



Floor Plans



Energy Efficiency Graph



These particulars, whilst believed to be accurate are set out as a general outline only for guidance and do not constitute any part of an offer or contract. Intending purchasers should not rely on them as statements of representation of fact, but must satisfy themselves by inspection or otherwise as to their accuracy. No person in this firm's employment has the authority to make or give any representation or warranty in respect of the property.