



Ballards Lane

London, N3 1LJ

Asking Price £260,000



One Double Bedroom apartment located in Ballard's Lane, Finchley. The property which is on the first floor above Commercial Premises, comprises a lounge, modern fitted kitchen with appliances, master bedroom, and modern bathroom and a private balcony with decking garden. Conveniently located to tube stations, local shops and the M1, A1 and North Circular road links. No upper Chain. Cash Buyers Only

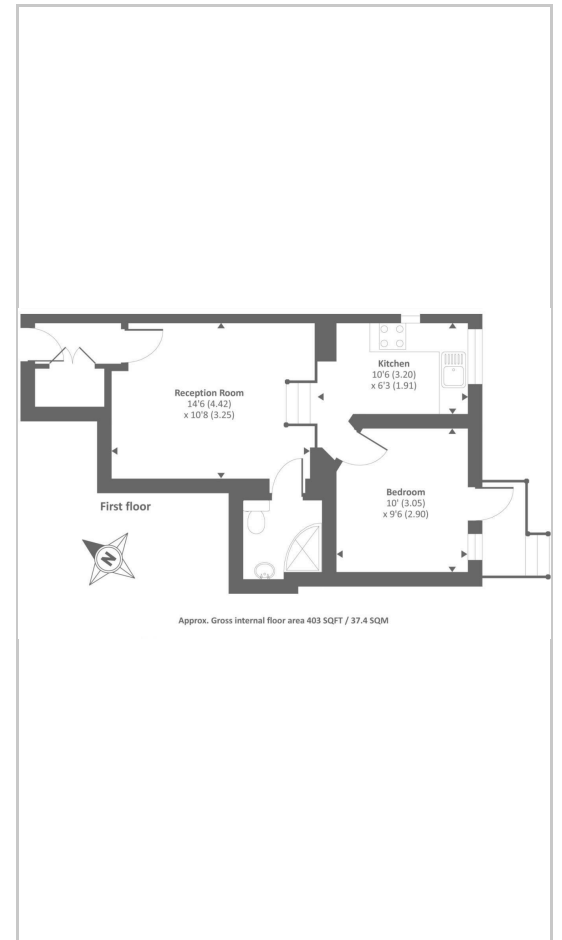




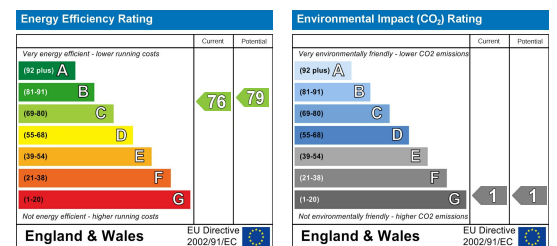
Area Map



Floor Plans



Energy Efficiency Graph



These particulars, whilst believed to be accurate are set out as a general outline only for guidance and do not constitute any part of an offer or contract. Intending purchasers should not rely on them as statements of representation of fact, but must satisfy themselves by inspection or otherwise as to their accuracy. No person in this firm's employment has the authority to make or give any representation or warranty in respect of the property.