



14 Middleton Road

Heysham | Morecambe | LA3 2QD

MATTHEWS
BENJAMIN

14 MIDDLETON ROAD

HEYSHAM

Substantial 5/6 bedroom, three storey end of terrace house conveniently located on Middleton Road, Heysham within easy walking distance of the local Nisa Convenience Shop, Heysham Co-Op food store and Heysham Medical Centre and short travel distance to the Heysham Road Shopping amenities, Half Moon Bay and local Beaches. The property offers immediate vacant possession with versatile family accommodation.

Accommodation

Well proportioned three story accommodation benefits from gas central heating, uPVC double glazing, an enclosed rear yard, outside WC and integral Store.

The ground floor comprises entrance vestibule, entrance hall, cloaks/WC, lounge and dining room both with living flame gas fires, spacious breakfast kitchen with a wall mounted EcoTEC central heating boiler.

The split level first floor has three bedrooms with the spacious front double room having two built in double wardrobes and a three piece en-suite bathroom. There is also a three piece family shower room with shower cubicle and Aquatronic electric shower unit.

The second floor is currently laid out as either 2/3 bedrooms or a possible self contained floor with one room being a sitting room with a three piece en-suite shower room with a thermostatic shower room.





Location

14 Middleton Road is situated in the popular residential village of Heysham having easy access to the two Primary Schools of St Peters and Trumicar . There is a choice of Shopping amenities with two local Co-op stores , Heysham Medical Centre and Moss Gate Sports/Recreational facilities and regular public transport.

Directions

Travelling from the M6 Motorway exit at junction 34 and join the A683 (Bay Gateway) following directions to Heysham. Continue directly through traffic lights through traffic lights and straight over four round-a-bouts . Once at the Heysham Road round a bout take the 3rd turning on your left and join Heysham Road (A589). Take the first turning on your left on to Middleton Road and number 14 is on your right hand side approximately 150 yards.

Services

Gas Electric Water Main Drains

Council Tax Band

C

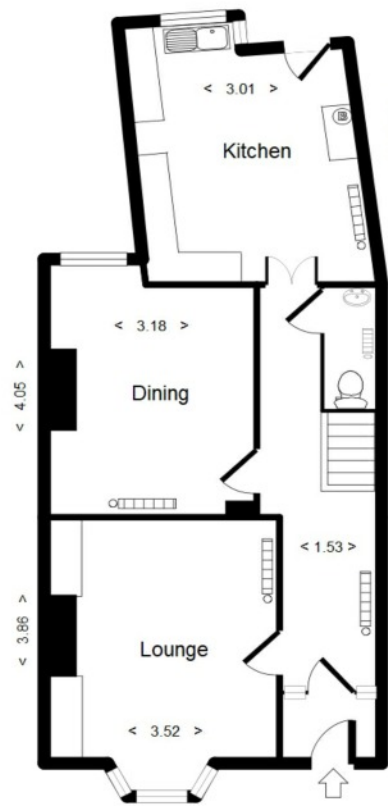
Tenure

Freehold

Price

£210,000

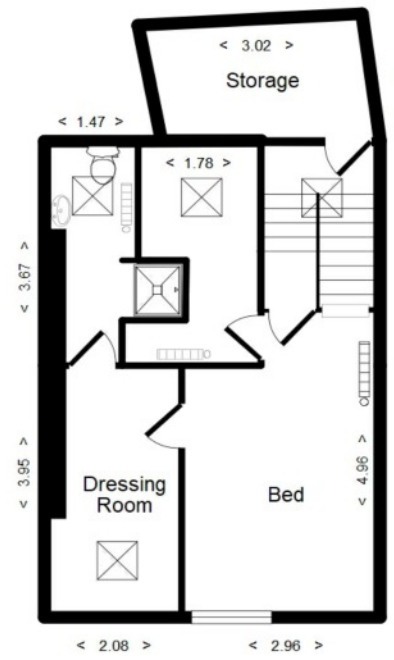
Score	Energy rating	Current	Potential
92+	A		
81-91	B		
69-80	C		77 C
55-68	D		
39-54	E	43 E	
21-38	F		
1-20	G		



Ground



First



Second

14 Middleton Road, Heysham, LA3 2QD

Total Area = 140.30 Sq. Metres

Viewing is strictly by appointment with the sole agents

The services, kitchen and sanitary ware, appliances and fittings have not been tested by the selling agents and purchasers should undertake their own investigations and survey. The agents endeavour to make their sales details are correct, however, purchasers and their conveyancers should make their own enquiries as to accuracy, especially where statements have not been verified. Please contact the agents before travelling any distance to view to check availability and confirm any point of particular importance.

19 Castle Hill, Lancaster, LA1 1YN
 t 01524 384960
 e sales@matthewsbenjamin.co.uk



ZOOPLA



rightmove

MATTHEWS
BENJAMIN